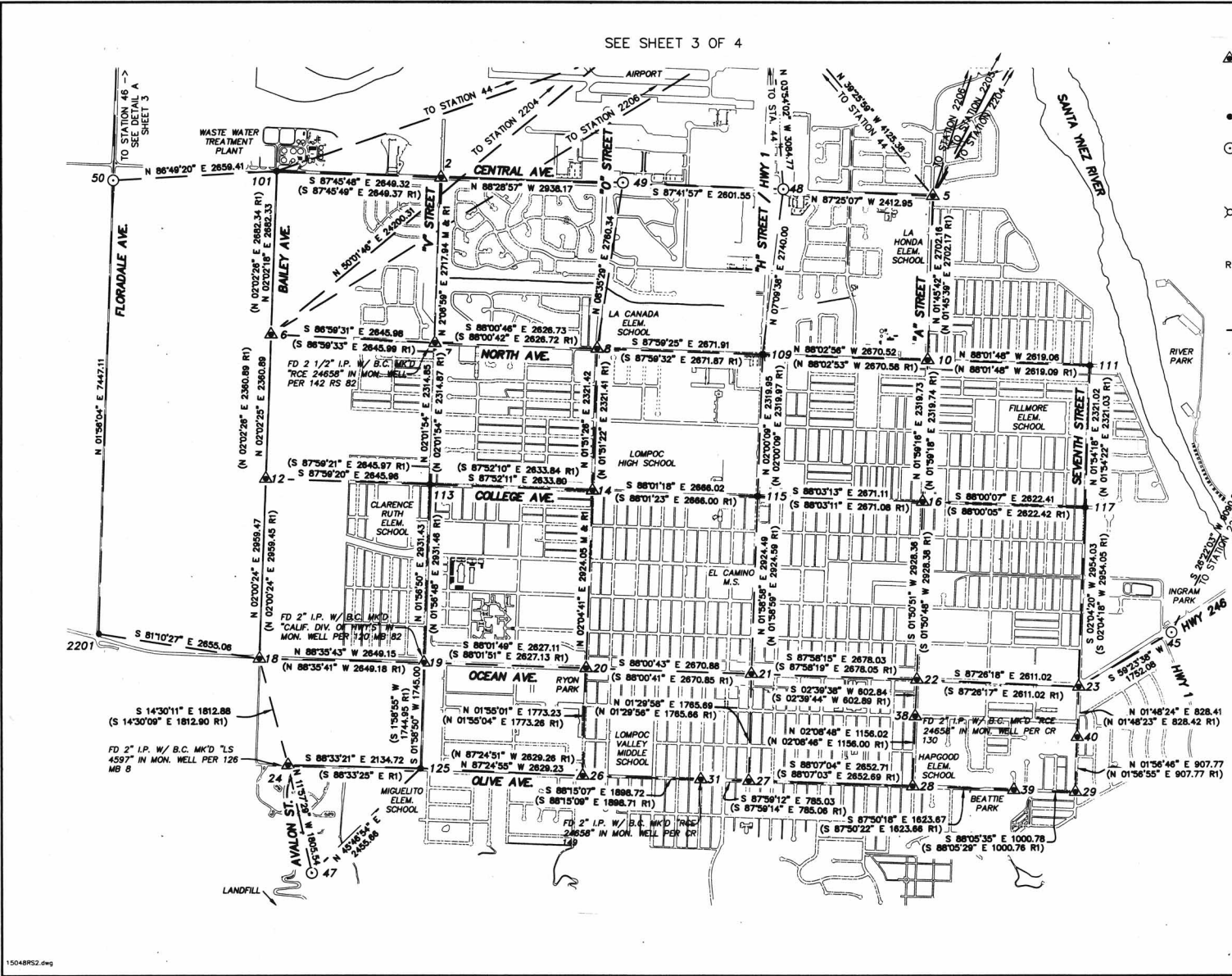


2-4

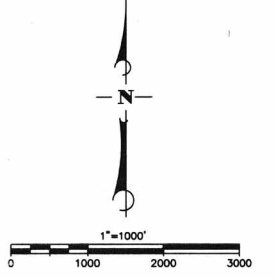
RS-110

SEE SHEET 3 OF 4



- LEGEND (THIS SHEET ONLY)**
- ▲ FOUND 2" BRASS CAP MONUMENT IN STANDARD MONUMENT WELL MK'D "CITY OF LOMPOC - LS 5470" AND WITH MONUMENT NUMBER AS SHOWN HEREON, PER 142 RS 82, UNLESS OTHERWISE NOTED.
  - FOUND MONUMENT. SEE SHEET 4 FOR DESCRIPTION AND COORDINATES.
  - SET 2" BRASS CAP MONUMENT MK'D "CITY OF LOMPOC - PLS 7807" AND WITH MONUMENT NUMBER AS DESIGNATED HEREON. SEE SHEET 4 FOR FURTHER DESCRIPTION AND COORDINATES.
  - ⊗ FOUND 2 1/2" BRASS CAP MK'D "CITY OF LOMPOC GIS MON - PLS 5617" AND WITH THE MONUMENT NUMBER SHOWN HEREON. NO RECORD.
  - R1 RECORD PER RECORD OF SURVEY FILED IN BOOK 142, PAGES 82-83. NOTE: RECORD DISTANCES WERE CONVERTED TO US SURVEY FEET BY MULTIPLYING SAID RECORD DISTANCE BY THE 3937/1200.

- NOTE:**
1. STREETS SHOWN HEREON ARE FOR INFORMATIONAL PURPOSES ONLY. MONUMENTS ARE NOT NECESSARILY ON STREET CENTERLINES. THE POSITIONS OF MONUMENTS RELATIVE TO CENTERLINES HAVE NOT BEEN SURVEYED.
  2. MONUMENT DATA SHEETS ARE ON FILE WITH THE OFFICE OF THE LOMPOC CITY ENGINEER.
  3. SEE SHEETS 1 AND 4 FOR FURTHER INFORMATION REGARDING METHOD OF SURVEY, CONTROL HELD AND FINAL COORDINATES.



**RECORD OF SURVEY**  
 OF THE CONTROL NETWORK FOR  
 THE CITY OF LOMPOC  
 GEOGRAPHIC INFORMATION SYSTEM

SANTA BARBARA COUNTY  
 STATE OF CALIFORNIA  
 SCALE: 1" = 1000'

**Penfield & Smith**  
 ENGINEERS • SURVEYORS  
 101 E. VICTORIA ST. SANTA BARBARA  
 (805) 963-9532 CALIF. 93101  
 MAILING ADDRESS: P.O. BOX 98 (93102)

SHEET 2 OF 4 SHEETS W.O. 15048.01

15048RS2.dwg