

DATE DRAWN	26-SEP-2008	DRAWN BY	CHARS DAY	ELEC. UTIL. MGR.	REVISION	4	REV. DATE	17-DEC-2020	STANDARD NUMBER: SM-1600
------------	-------------	----------	-----------	------------------	----------	---	-----------	-------------	--------------------------

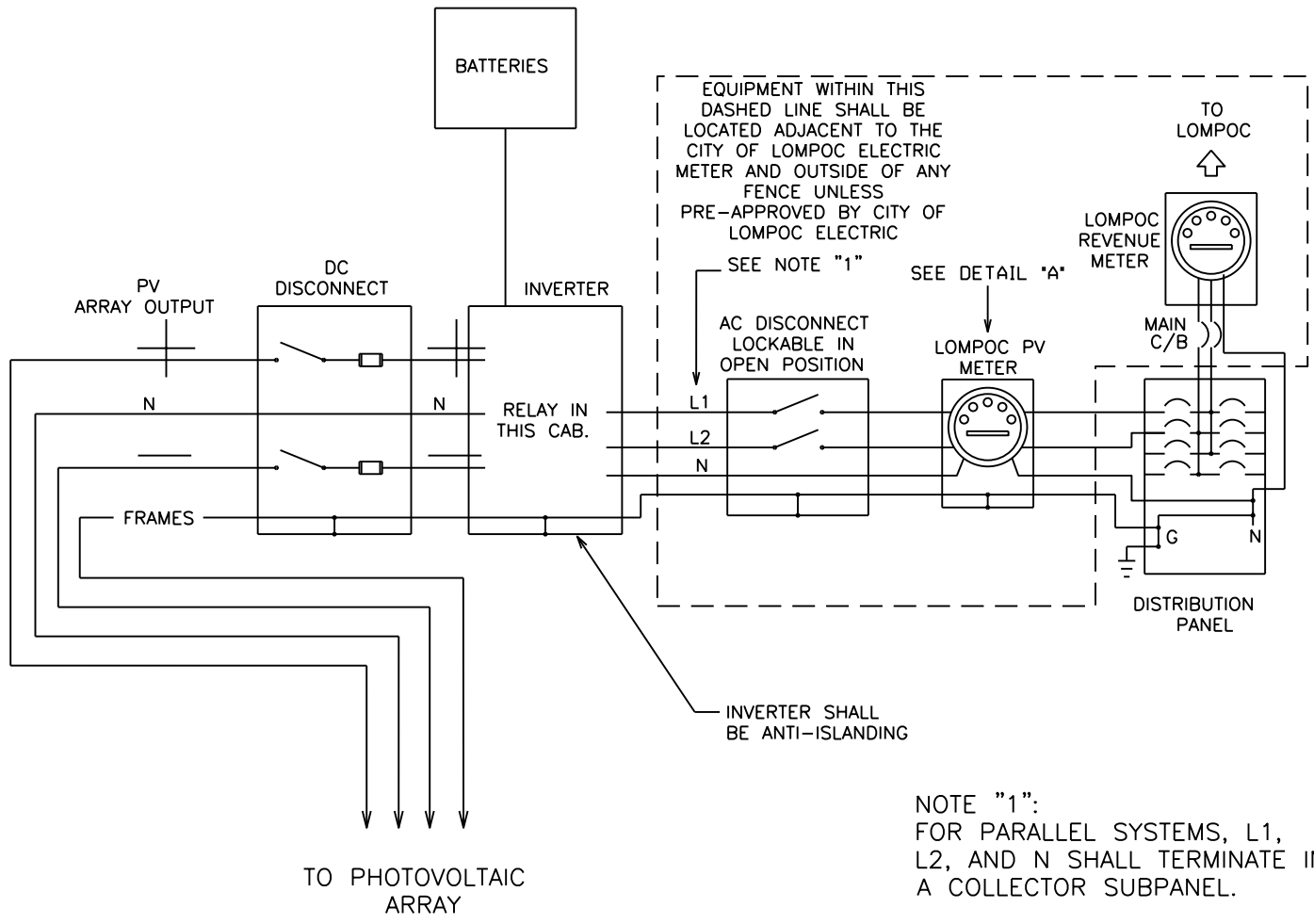
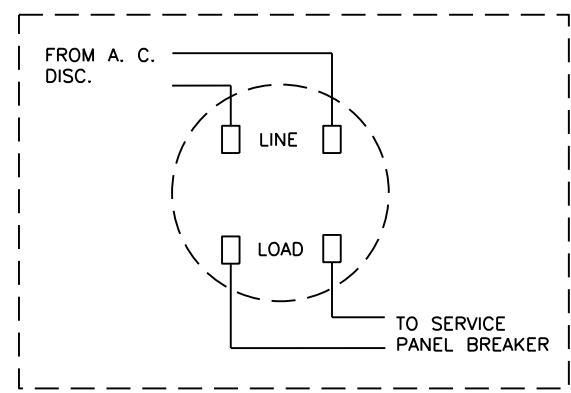


CITY OF LOMPOC
ELECTRIC UTILITY DIVISION

CONSTRUCTION STANDARD
TYPICAL PHOTOVOLTAIC SYSTEM
INTERCONNECTION DIAGRAM

-DISCONNECTS AND MAIN ELECTRICAL PANEL SHALL HAVE PERMANENT NAMEPLATE DETAILING CONNECTION TO SOLAR PV INVERTER

DETAIL "A"



NOTE "1":
FOR PARALLEL SYSTEMS, L1, L2, AND N SHALL TERMINATE IN A COLLECTOR SUBPANEL.