

Planning Division Current & Pending Project Highlights

September 2024



La Purisima Court
SE Corner of North V Street & West North Avenue

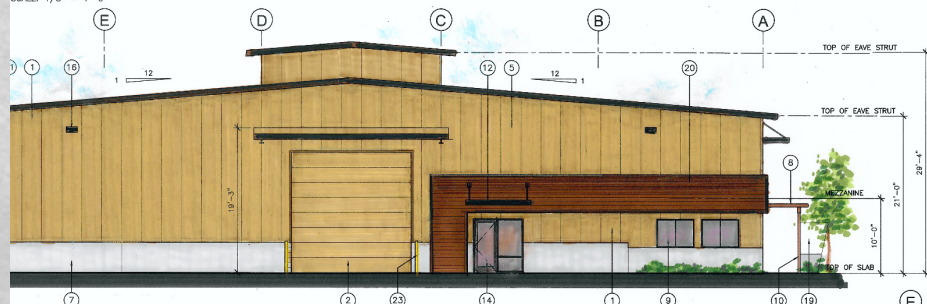


La Purisima Court

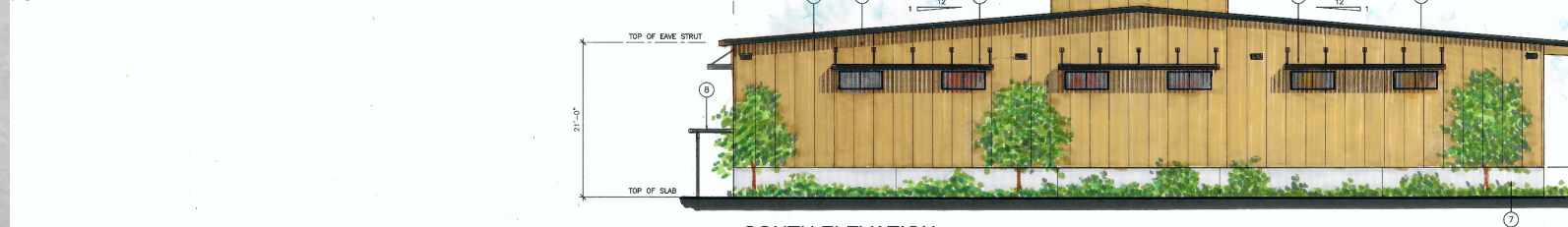
New Wine Warehouse Racine Wines



WEST ELEVATION
SCALE: 1/8" = 1'-0"



SOUTH ELEVATION
SCALE: 1/8" = 1'-0"



EAST ELEVATION
SCALE: 1/8" = 1'-0"

ELEVATION REFERENCE NOTES

- 1 4" THICK K5 "SHADOWLINE" R33 INSULATED WALL PANEL AS MANUFACTURED BY KINGSPAN. EC 15, E30+143 COLOR "SURREY BEIGE"
- 2 16'-0" X 16'-0" INSULATED STEEL OVERHEAD SECTIONAL SERVICE DOOR. DOOR COLOR TO MATCH INSULATED WALL PANELS.
- 3 LOCATION OF DIAGONAL STEEL "X" BRACING.
- 4 8'-0" X 7'-0" STEEL DOOR AND FRAME PAINTED TO MATCH STEEL WALL PANELS. A. "SURREY BEIGE"
- 5 PRE-ENGINEERED STEEL CANTILEVERED CANOPY ROOF. COLOR TO MATCH MAIN ROOF PANELS "SANDSTONE"
- 6 PRE-ENGINEERED STEEL FASCIA WITH POST HUNG EAVE RAIN GUTTERS. AS MANUFACTURED BY KINGSPAN. COLOR "DARK BRONZE" TO MATCH FASCIA. A. NATURAL CONCRETE.
- 7 4'-0" HIGH CONCRETE BULKHEAD WALL WITH CEMENT SIMULACR. A. NATURAL CONCRETE.
- 8 8 X 12 WOOD TRELIS BEAM AND 4 X 6 JOISTS @ 18" O.C. WITH PAINT FINISH. COLOR: SHERWIN WILLIAMS SW 3001 "SHAGBARK"
- 9 DARK BRONZE ANODIZED ALUMINUM FRAME WINDOW WITH LIGHT BRONZE DUAL GLAZED INSULATED GLASS.
- 10 HSS 4 X 4 X 1/4" STEEL TUBE COLUMN AT TRELIS WITH PAINT FINISH. COLOR: SHERWIN WILLIAMS SW 7020 "BLACK FOX"
- 11 PRE-ENGINEERED STEEL RAKE EXTENSIONS AND TRIM AS MANUFACTURED BY KINGSPAN. COLOR: "DARK BRONZE" WITH "SURREY BEIGE" LINER PANEL.
- 12 PRE-ENGINEERED ALUMINUM CANOPY AWNING WITH 1.5" DIA. SCH 40 ALUMINUM PIPE HANGERS (TYPICAL). A. FINISH COLOR: DARK BRONZE ANODIZED ALUMINUM.
- 13 INSULATED ROOF PANELS. A. INSULATED ROOF PANELS SHALL BE KINGSPAN KINGZIP SSR C-230, MECHANICALLY SEALED. INTERLOCK #08R-0203, FM WITH SOLID FLUROFON PVDF FINISH. INTERIOR PANEL FACE SHALL BE 2" URETHANE FOAM INSULATION. B. PANEL EXTERIOR FACE SHALL BE 28 GAUGE G90 GALVALUME WITH SOLID FLUROFON PVDF FINISH. INTERIOR PANEL FACE SHALL BE 2" URETHANE FOAM INSULATION. C. COLOR: "SANDSTONE"
- 14 DARK BRONZE ANODIZED BRONZE 4.5" ALUMINUM STOREFRONT LOW E GLAZED INSULATED GLASS.
- 15 MOTORIZED DAMPER FOR NIGHT-AIR COOLING AIR INTAKE. COLOR TO MATCH STOREFRONT.
- 16 WALL MOUNTED LED LIGHT FIXTURES WITH DARK BRONZE ANODIZED ALUMINUM HOUSING. LIGHT FIXTURES SHALL BE CUTOFF TYPE LUMINAIRES TO MINIMIZE LIGHT POLLUTION AND STRAY LIGHT FROM LEAVING SITE. FIXTURE SHOWN ARE SHOWN FOR REFERENCE ONLY. SEE SPECIFICATIONS FOR LISTED FIXTURES.
- 17 NIGHT-AIR COOLING CABINET EXHAUST FAN.
- 18 6'-0" HIGH (MIN) MECHANICAL EQUIPMENT ENCLOSURE FENCE WITH 1/2" CLEAR SIDING WITH SOLID BODY STAIN FINISH. COLOR: SHERWIN WILLIAMS SW 3001 "SHAGBARK"
- 19 5'-0" HIGH WOOD ACCESS BAND, FURRED OUT 8" WITH 1 X 6 SIDING AND SOLID BODY STAIN FINISH. COLOR: SHERWIN WILLIAMS SW 3001 "SHAGBARK"
- 20 PRE-ENGINEERED STEEL CANTILEVERED ROOF EXTENSION CANOPY. A. "SURREY BEIGE" LINER PANEL.
- 21 7'-0" WIDE ROLLING WOOD GATE. A. HORIZONTAL T&G CEDAR TO MATCH FASCIA.
- 22 4" DIAMETER X 4'-0" HIGH CONCRETE FILLED STANDARD STEEL POSTS. PAINTED "SAFETY YELLOW"

Racine Wines



Our 2021 Vintage

PROPOSED PLANT PALETTE

CENTRAL COAST

COASTAL CALIFORNIA
DROUGHT TOLERANT PLANTINGS

SYMBOL	BOTANICAL NAME COMMON NAME	PLANT TYPE/WUCOLS PF	CONTAINER SIZE
	HEPROMELIS ARBUTIFOLIA CALIFORNIA TOYON	TALL ACCENT SHRUB/LOW	15 GALLON
	CEANOTHUS 'CONCHA' CALIFORNIA LIAC	MEDIUM SHRUB/LOW	5 GALLON
	CISTIS HYBRIDUS WHITE ROCKROSE	MEDIUM SHRUB/LOW	5 GALLON
	RHAMNUS LAMPELLANA MINOR DWARF WHITE HAWKROSE	MEDIUM SHRUB/LOW	5 GALLON
	SAVIA ILLICANTIA MEXICAN BUSH SAGE	MEDIUM SHRUB/LOW	5 GALLON
	HEPERALCE PARVIFLORA RED YUCCA	SMALL SHRUB/LOW	1 GALLON
	PLUMBAGO IMPERIAL BLUE BLUE PLUMBAGO	LOW SHRUB/LOW	5 GALLON
	COLEONEMA FULCHELLUM SUNSET GOLD	LOW SHRUB/LOW	5 GALLON
	BACCHARIS PULULARIS PROSTRATE COYOTE BUSH	LOW SHRUB/LOW	1 GALLON 5 o.c.
	LANTANA MONTEVIDENSIS PURPLE LANTANA	LOW SHRUB/LOW	1 GALLON
	STACHYS BREANTINA LAMB'S EAR	LOW SHRUB/LOW	1 GALLON
	FESTUCA MARIE ATLAS FESCUE	ORNAMENTAL GRASS/LOW	1 GALLON
	GAZANIA RIGENS 'NEW DAY' MULTI-COLOR GAZANIA	LAWN SUBSTITUTE/LOW	FLATS 12" o.c.
	DISTICTUS SUCCINATORIA RED TRUMPET VINE	VINE /LOW	5 GALLON

PROPOSED TREE LIST

CENTRAL COAST

DRY COASTAL CALIFORNIA
DROUGHT TOLERANT PLANTINGS

SYMBOL	BOTANICAL NAME COMMON NAME	PLANT TYPE	CONTAINER SIZE
	ARBUTUS MARINA COASTAL MADROÑE STRAWBERRY TREE	25' 30'/LOW	24" BOX
	PRUNUS CERASIFERA KRAUTER VEJVIOUS' FRUITLESS CHERRY PLUM	20' 25'/MED LOW	36" BOX
	LAGRISTROPHOMA INDICA CRANPE MYRTLE	20' 25'/MED LOW	24" BOX
	PLATANUS ACERIFOLIA LONDON PLANE	45' 60'/LOW	24" BOX
	PINUS PINEA ITALIAN STONE PINE	50' 70'/MED LOW	48" BOX

NOTES

- Plant material proposed is drought tolerant and meets the low water use requirements of the City's ordinances. The soil type as required by the City's Preliminary Conceptual Landscape Standards is Sorento Loam and is compatible with the selected plant types.
- WELO Irrigation Design Compliance and Preliminary Calculations are located this sheet. Street Trees will meet the requirements of the City of Lompoc and will be 10% 48" and 810% 36" Box size.
- Granite landscape boulders varies in size 3' x 2' and 2' x 18".



WELO PRELIMINARY CALCULATION

APPENDIX A AND B WUCOLS PRELIMINARY CALCULATION

Regular Landscape Areas Total 8,546 SF

(g) Hydrantages for (8,246SF) with an EAF of 0.55 and an Eio of 4.3 (Lompoc)
 *MAWA = (41.3)(8,246)(0.55)(4.3) = 307,332 gals per yr.

(MAWA) Maximum Allowed Water Allowance = 73,875 gallons per year meeting the maximum water allowed use mandated by the State of California.

ESTIMATED TOTAL WATER USE PRELIMINARY CALCULATION - ETWU Lompoc 41.3

Hydrantage No.	Plant Factor (PF)	Irrigation Method	Irrigation Efficiency (IE)	ETW (PPH)	Total Landscape Area SF	ETW x Area	Est. Total Water Use (ETWU)
#1 19833	35	Drip	81	2855	0	0	0
#2 - #6	LOW	Drip	81	2855	3045	2503	39038
						(Tree PF included in total landscape)	
						A = 8,246	B = 3.337
						TOTAL ETWU 39,038*	
						TOTAL MAWA 73,875	

ETWU = (Eio x EAF) x Area
 EAF Calculators - Regular Landscape Areas All Landscape Areas, the coverage EAF for Regular Landscape Areas must be 0.55 or below for residential areas, and 0.4 or below for non-residential areas.

Code	MAWA	Area	IE	PF	EAF	Area	ETWU
Total	73,875	8,246	81	35	4.3	3045	39,038

WELO CERTIFICATE OF COMPLIANCE

The landscape plan, when detailed, will comply with the City of Lompoc Municipal Code and the "Conservation Mandate Water Efficient Landscape Ordinance" (WELO) prepared in accordance with the water efficient landscape work sheets Appendix A and Appendix B. The WUCOLS values were from the State Guidelines will be used to determine final PF (Plant Factor) value in the final calculation in the construction document phase.

The water conservation method for the new landscape plant material will have a LOW PF (Plant Factor) coverage rating and the ETWU (estimated total water use) per year is estimated to be within the Maximum Allowable Water Allocation (MAWA) which will be calculated for the project. Additionally, a "Smart Controller" with a climate control weather station will be used to monitor the irrigation water and allocate daily water consumption to the minimum requirements for each hydrantage. All trees will be irrigated on separate systems so that once established, water can be regulated in a more efficient manner.

[Signature]
 Iggy Ivo, Landscape Architect RLAA#108

Infiltration Basin
Per Civil Sheets

Infiltration Basin
Per Civil Sheets

Infiltration Basin
Per Civil Sheets

CENTRAL AVENUE



1" = 20' 0"

New Starbucks Drive Thru



NORTH 'H' STREET & WEST OAK AVENUE PERSPECTIVE

El Pollo Loco Drive-Thru



FRONT ELEVATION - EAST

SCALE: 1/4" = 1'-0"

SIGNAGE BY VENDOR.
SEPARATE PERMIT



SIDE ENTRY ELEVATION - NORTH

SCALE: 1/4" = 1'-0"

LEGEND

- MAIN BLDG. - BROWN/HELLIPS - REFER NOTE 01/01
- DRIVE THRU WINDOW - SAND PINK - EXTERIOR GRACE SIGNALL PINK
- SIGNAGE - BROWN/HELLIPS - BLACK 700-40
- DECORATIVE ELEMENTS - BROWN/HELLIPS - BLACK 700-40



ARMET DAVIS NEWLOVE &
ASSOCIATES, AIA ARCHITECTS

1300 OLIVE ST. #100
SANTA MONICA, CALIFORNIA 90404
PH: 310-451-0000 FAX: 310-451-0100

REV. DATE DESCRIPTION

APN: 009-010-006

THIS IS A PRELIMINARY SET OF ARCHITECTURAL DRAWINGS. THE USER SHALL BE RESPONSIBLE FOR OBTAINING ALL NECESSARY PERMITS AND APPROVALS FROM THE APPROPRIATE AGENCIES. THE USER SHALL BE RESPONSIBLE FOR OBTAINING ALL NECESSARY PERMITS AND APPROVALS FROM THE APPROPRIATE AGENCIES. THE USER SHALL BE RESPONSIBLE FOR OBTAINING ALL NECESSARY PERMITS AND APPROVALS FROM THE APPROPRIATE AGENCIES.



El Pollo Loco Drive-Thru



El Pollo Loco Drive-Thru



River Terrace



River Terrace



River Terrace



Bodger Meadows (County)



Bodger Meadows (County)



3D AERIAL VIEW

HBA
ARCHITECTURE + PLANNING

122 E. ARRELLAGA
SANTA BARBARA
CALIFORNIA 93101
805 962 2746

BODGER MEADOWS
UNINC. CA
08 28471 0010

NO.	REVISION
08.05.2018	
08.27.2018	SUBMITTING

PROJECT NO. 10000

A4.0

Planning Division Website

All Current & Pending Projects can be reviewed on the Planning Division Website at:

<https://www.cityoflompo.com/government/departments/economic-community-development/planning-division/planning-documents-and-maps/-folder-112>