



General Plan Environmental Justice Element

Planning Commission Meeting

August 14, 2024

Public Hearing Item #1



Planning Commission review and recommendation to the City Council to consider the adoption of the Environmental Justice Element to the 2030 General Plan. An Addendum to the 2030 General Plan Final Environmental Impact Report (SCH. No. 2008081032) was prepared for the project pursuant to the California Environmental Quality Act (CEQA).

What is Environmental Justice?

The State of California defines Environmental Justice (“EJ”) as *“the fair treatment of people of all races, cultures, and incomes with respect to the development, adoption, implementation, and enforcement of environmental laws, regulations, and policies”* (California Government Code Section 65040.12)

Senate Bill (SB) 1000

- In recognition that the planning profession has power to influence health and equity outcomes across communities, lawmakers passed SB 1000 in order to integrate EJ principles into the planning process and improve public participation.

Environmental Justice



- An Environmental Justice Element is required to identify disadvantaged communities within the planning area.
- Ensure all areas of the City are equally considered and planned for.
- A disadvantaged community means, *“An area identified by the California Environmental Protection Agency pursuant to Section 39711 of the Health and Safety Code or an area that is a low-income area that is disproportionately affected by environmental pollution and other hazards that can lead to negative health effects, exposures, or environmental degradation”* (Gov. Code Section 65302(h)(4)(A)).

Identifying Environmental Justice Communities



- CalEnviroScreen 4.0 (CA Office of Environmental Health Hazard Assessment)
- EJScreen (US Environmental Protection Agency)

Community of Focus

- “*Community of Focus*” refers to the area encompassing the census tracts within the city that experience lower incomes, lower levels of education, higher proportions of minority residents, and a disproportionately large burden of exposure to environmental hazards. These inequities lead to disproportionate pollution burdens, health impacts, and socioeconomic barriers.
- Five census tracts comprise Lompoc’s Community of Focus (Figures EJ-3, EJ-4, and EJ-5 on Pages 15, 17, & 23)

Figure EJ-5 Census Tracts Resulting from 2021 Redistricting, Lompoc

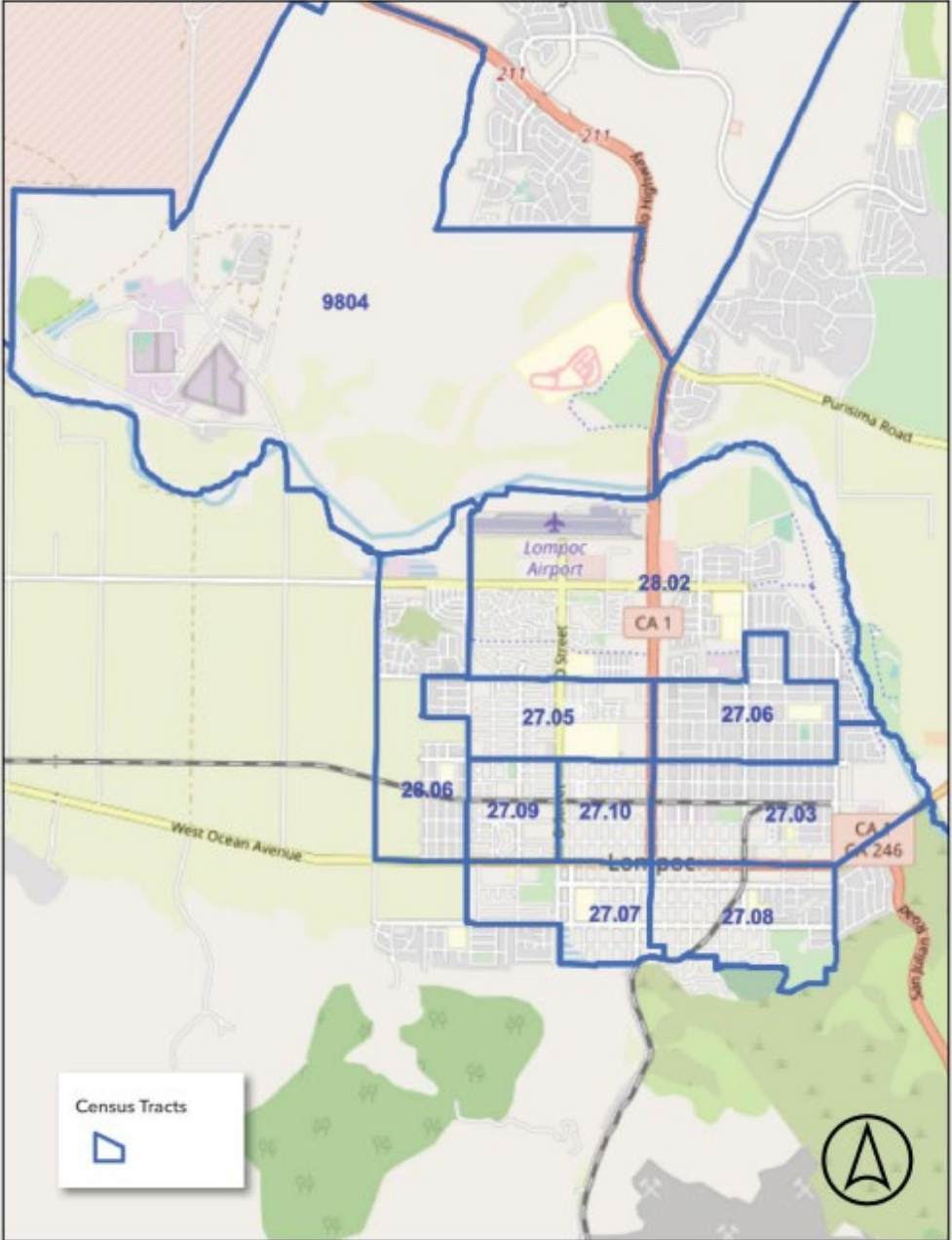


Figure EJ-3 CalEnviroScreen Overall Census Tract Scores, Lompoc

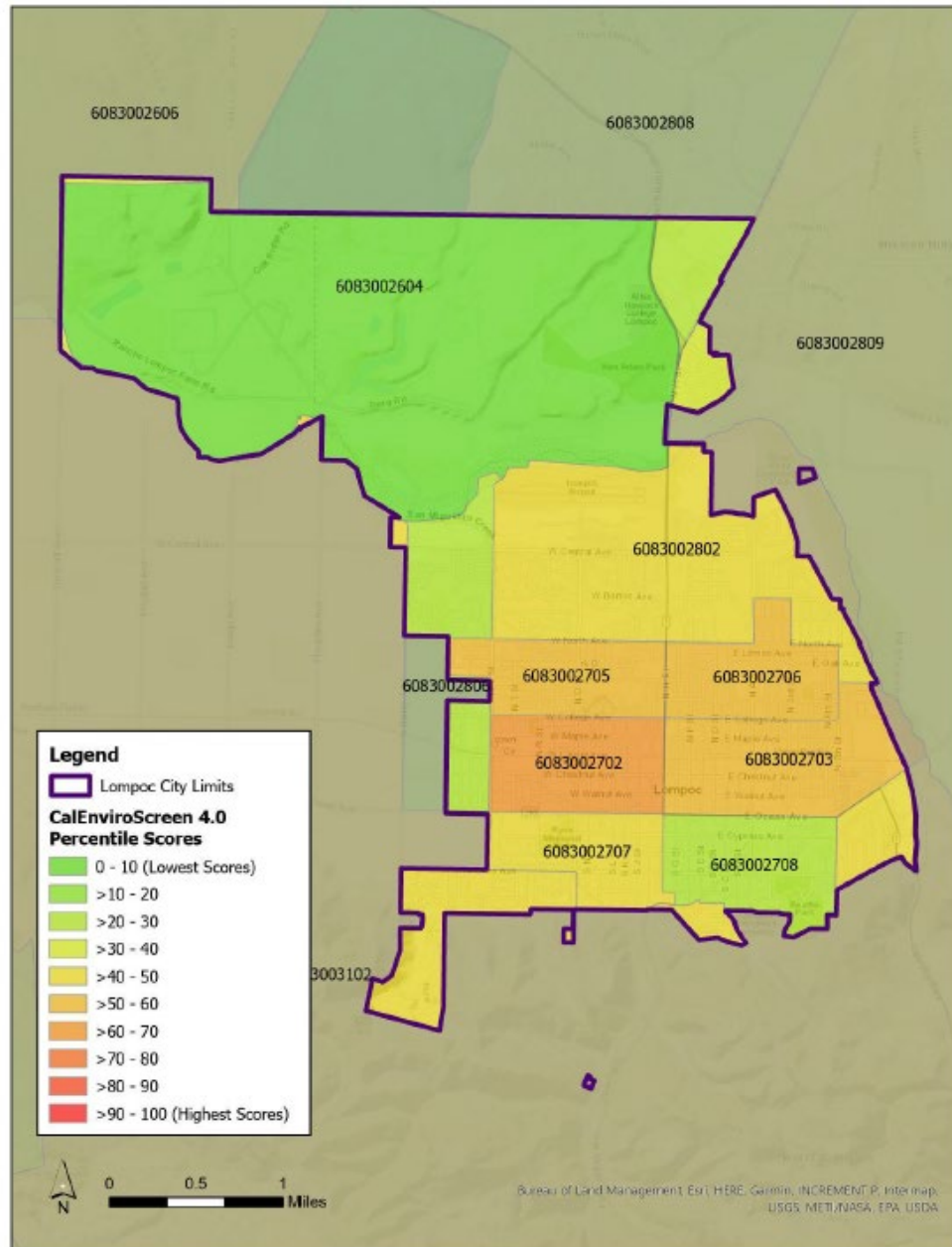
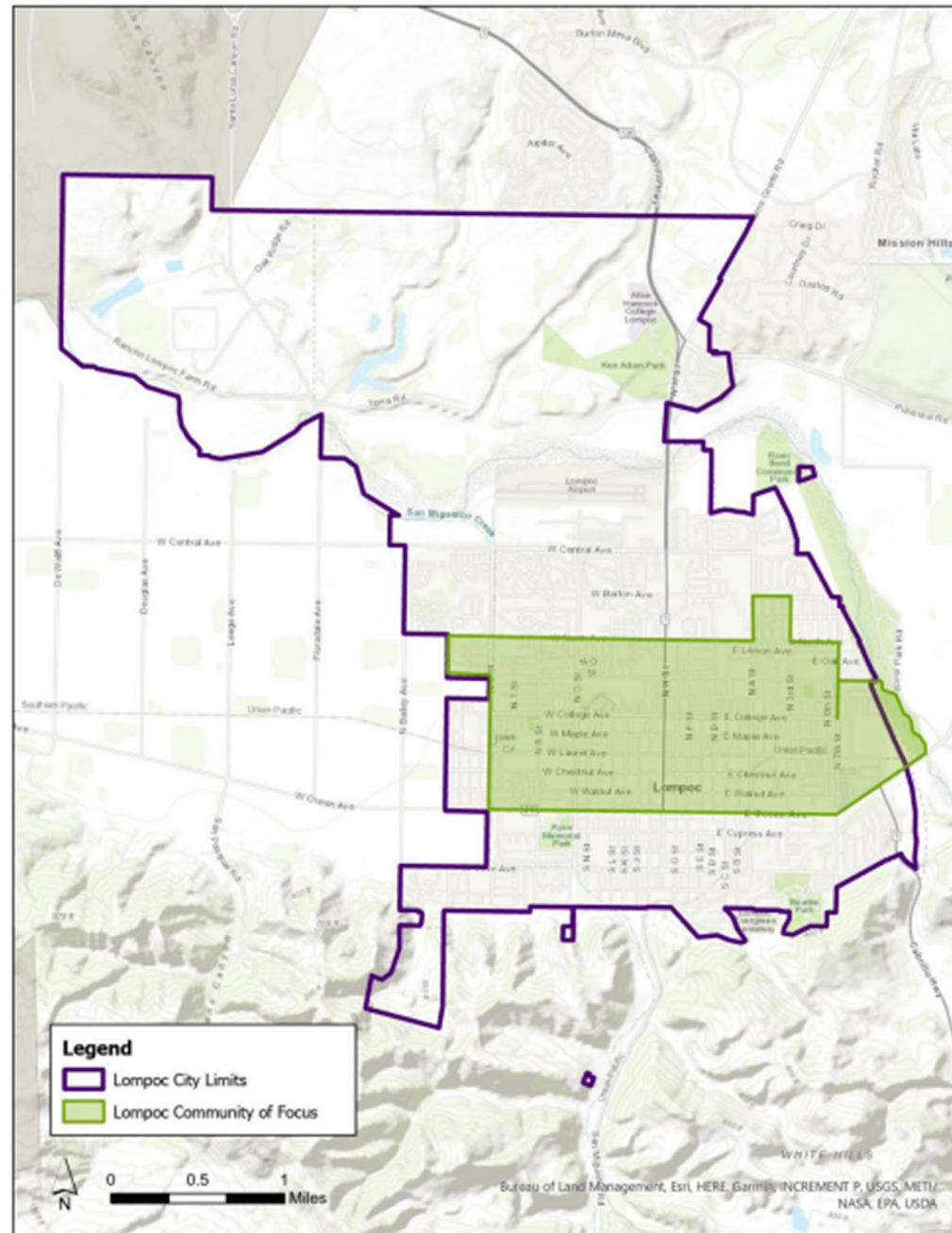


Figure EJ-4 Lompoc Community of Focus



Community Profile/Demographics



- Population/Density
- Race/Ethnicity
- Household Income/Poverty Status
- Educational Attainment
- Language Spoken & English Proficiency
- Age

Environmental Justice Concerns in Lompoc



- Pollution Exposure / Pesticide Use



- Pollution Exposure / Traffic Proximity



- Pollution Exposure / Risk Management Plan (RMP) Facility Proximity



- Safe & Sanitary Homes / Lead Exposure



- Safe & Sanitary Homes / Housing Cost Burden



- Safe & Sanitary Homes / Housing Conditions



- Civic Engagement / Language isolation

Implementation Programs

- Ensure EJ topics are addressed community-wide
 - **Lead-based paint remediation**
 - **Code enforcement**
 - **Emergency housing repair program**
 - **Resource gaps**

Overall, the Element...

- Priorities include transparent decision making, engaging the community in budgeting/scheduling City events, and making public outreach materials available online, in person and in **English & Spanish.**

Proposed New Goals & Policies



- **Organization** of goals, polices, and programs is consistent with the topics of concern for Lompoc (PC request)
- **New Goals** focus on pollution exposure, increased physical activity, community infrastructure, safe and sanitary living conditions (PC request)
- **New Policies** support pesticide education, air pollution, walking/biking, community infrastructure, safe and sanitary housing, and housing rehabilitation (PC request)

Proposed Policy & Program Deletion



- **Pollution Exposure -Policy EJ 1.6 (Equity in Capital Projects) and Program A (Capital Improvement Prioritization)** are recommended to be deleted.
- This topic is better to be addressed by the City's Management Services Department (Finance Division) who is the lead on the Capital Improvements Plan (CIP).

Proposed New Policies

- **Pollution Exposure -Policy EJ 2.1 (Pesticide Education), EJ 2.2 (Industrial Truck Idling)**
- These policies would address concerns that the Commission recently had regarding pesticides and pollution exposure in the City.
- Page 65, showing EJ 4.2 (Industrial Truck Idling) is shown in error and recommended to not be included in the Physical Activity Policy section.

Proposed New Policies

- **Safe/Sanitary Housing -Policy EJ 6.2 (Rehabilitation and Preservation)**
- This new policy addresses rehabilitation and preservation of substandard housing conditions and preservation of affordability for dwellings owned/occupied by lower-income households Citywide.

Proposed New Program

- **Program A (Lead Based Paint Remediation)**
- This program would require the City to apply for a grant through the Department of Housing and Urban Development's Lead Hazard Reduction grant program.
- This program assists local governments to undertake comprehensive programs to identify and control lead-based paint hazards in eligible privately-owned rental or owner-occupied housing.

Public Comments

- Public Comments received are shown as Attachment 4 to the Staff Report.
- No new public comments have been received since the May 8, 2024, public hearing.

Environmental Review



- An Addendum to the Final General Plan EIR was completed for the project, attached as Exhibit A in the Planning Commission Resolution.
- The Addendum found that the potential environmental impacts of the focused GP Update are within the scope of the previously certified Final EIR.
- Staff recommends that the Planning Commission recommend that the City Council approve the Addendum for the project with the findings required by CEQA contained within the attached Resolution

Staff Recommendation



- Recommend that the City Council adopt the Environmental Justice Element in accordance with Planning Commission Resolution 1007 (24)