

Item #2
LOM 640
Wolf Tentative Parcel Map

Planning Commission Meeting
June 12, 2024

Project Location

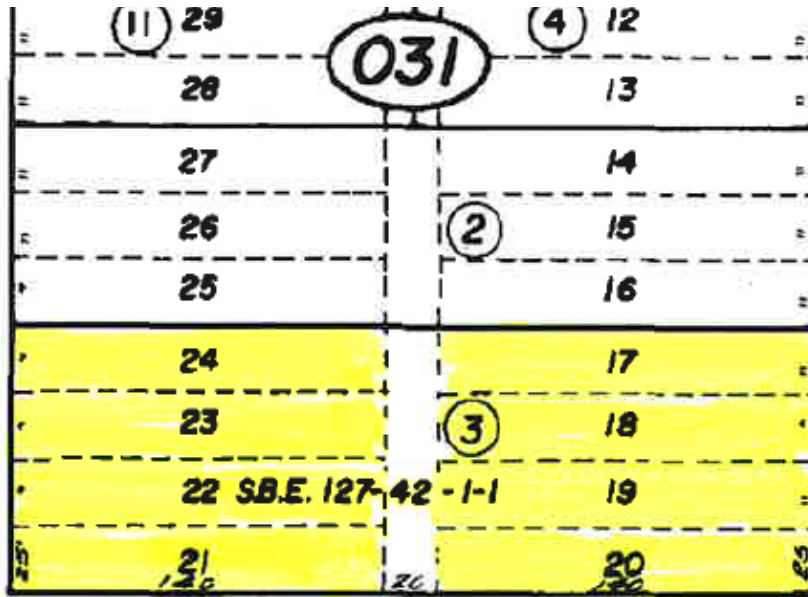
315 East Chestnut Avenue



Project Description

- Tentative Parcel Map to merge eight (8) existing non-conforming lots (totaling approximately 0.69 acres)
- Subdivide 0.69 acres into two (2) lots, both proposed to be 0.34 acres in size

Project Description



- The map meets development standards per Lompoc Municipal Code Title 17 (Zoning) for the Industrial zoning district
- It eliminates existing nonconforming lots on the property.
- The alleyway was previously abandoned

Existing Conditions

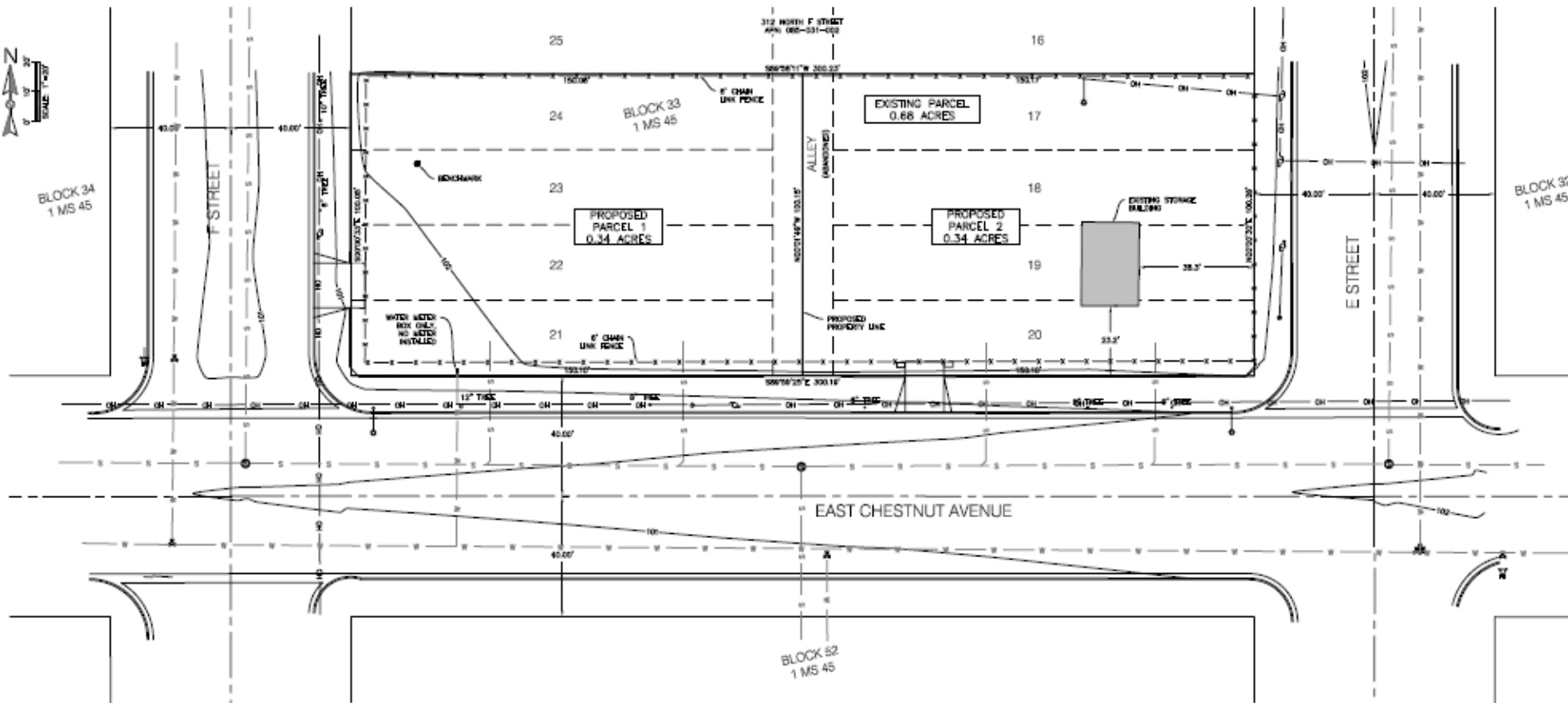


A view West along Chestnut

A view East into the property



Proposed Parcel Map



Environmental Review

- The project is categorically exempt from review pursuant to Section 15315, Minor Land Division, of the CEQA Guidelines

Staff Recommendation

- Adopt Resolution No. 1005 (24) approving LOM 640
- OR
- Provide other direction

End of Presentation