

2021 Annual Inspection Report

Wood Dump and Former Army Landfill

Environmental Long-Term Monitoring and Inspection

Former U.S. Disciplinary Barracks (USDB)

Lompoc, California

Prepared for:



Department of the Army
U.S. Army Corps of Engineers, Los Angeles
915 Wilshire Blvd., Suite 930
Los Angeles, CA 90017

Prepared by:



Ahtna Global, LLC
9699 Blue Larkspur Lane
Suite 203
Monterey, CA 93940

USACE Contract No. W912PL18D0044

Delivery Order W912PL21F0041

Version Final

Date June 2022

Report Approval

Report Title: **2021 Annual Inspection Report**
Wood Dump and Former Army Landfill
Environmental Long-Term Monitoring
Former U.S. Disciplinary Barracks (USDB)
Lompoc, California

Prime Contractor: Ahtna Global, LLC
USACE Contract No. W912PL18D0044
Delivery Order No. W912PL21F0041



Bradley D. Clark, P.E., Certificate No. C 55425
Operations Manager/Chief Engineer

6/6/22

Date



Sommer M. Carter, PMP
Program/Project Manager

6/6/22

Date

Table of Contents

Report Approval	i
Table of Contents.....	ii
1.0 Introduction	1
1.1 General Background.....	1
1.2 Wood Dump Site History.....	2
1.3 FAL Site History	3
2.0 Inspections	5
2.1 Wood Dump Site	5
2.2 Former Army Landfill.....	5
3.0 Inspection Results and Recommendations	6
3.1 Wood Dump Site	6
3.2 Former Army Landfill.....	6
4.0 References.....	7

Figures

- 1 Site Location Map
- 2 Wood Dump Site Map

Appendices

- A Santa Barbara County Environmental Health Services Site Inspection Reports
- B Bureau of Prisons Site Inspection Report
- C Wood Dump Site Inspection Checklist
- D Site Photos
- E Responses to Regulator Comments

Acronyms and Abbreviations

Ahtna	Ahtna Global, LLC
Army	U.S. Department of the Army
BCT	BRAC Clean-up Team
BRAC	Base Realignment and Closure
BOP	Bureau of Prisons
EPA	United States Environmental Protection Agency
FAL	Former Army Landfill
ft bgs	Feet below ground surface
mg/kg	milligrams per kilogram
NFA	No-Further-Action
PRG	Preliminary Remediation Goal
QAPP/WP	Quality Assurance Project Plan/Work Plan
SBCEHS	Santa Barbara County Environmental Health Services
USACE	U.S. Army Corp of Engineers
USDB	U.S. Disciplinary Barracks

1.0 Introduction

On behalf of the U.S. Army Corps of Engineers (USACE), per Contract No. W912PL18D0044, Delivery Order No. W912PL21F0041, Ahtna Global, LLC (Ahtna) has prepared this Annual Inspection Report for the Wood Dump Site and Former U.S. Department of the Army (Army) Landfill (FAL) located at the Former U.S. Disciplinary Barracks (USDB), Lompoc, California (Figure 1). The report presents the 2021 inspections of the Wood Dump and FAL. Inspections are conducted as part of the *Final Post Site Mitigation, Maintenance and Monitoring Plan, Wood Dump Site* (ARCADIS, 2009b) and its associated *Change Memorandum—Final Post Site Mitigation, Maintenance, and Monitoring Plan, Wood Dump Site* (Army, 2014) and the *Restoration of Site Conditions at the Former Army Landfill* (Army, 2006).

Ahtna conducted fieldwork for the 2021 annual inspection of the Wood Dump Site according to the *Quality Assurance Project Plan/Work Plan* (QAPP/WP; Ahtna 2021). This report includes documentation of all field activities.

Appendix A contains the semiannual inspections of the Wood Dump Site performed by the Santa Barbara County Environmental Health Services (SBCEHS). Appendix B contains the Bureau of Prisons (BOP) quarterly inspections of the FAL.

1.1 General Background

The USDB is located in Lompoc, California (Figure 1). The entire former USDB was selected for closure by the Base Realignment and Closure (BRAC) 95 Commission and identified as BRAC property subject to transfer or lease.

In 1941, the War Department purchased 90,000 acres for the establishment of Fort Cooke, and in 1946, the Lompoc Branch of the USDB was built as a military detention center. In July 1959, the USDB and the surrounding lands were permitted to the Bureau of Prisons (BOP) and renamed the Federal Correctional Institution (FCI). In November 1968, the permit was amended, and 442 acres were permitted to the U.S. Air Force for construction of the Western Test Range Transmitter Facility (WTRTF). In July 1981, the FCI officially became a United States Penitentiary (USP). In 2004, the WTRTF parcel was transferred to the U.S. Air Force for use by Vandenberg Air Force Base (VAFB). In August 2002, the remainder of the former USDB was transferred to the Department of Justice for use by the BOP. Currently, the BOP complex contains the following, which are collectively called the Federal Correctional Complex (FCC):

- United States Penitentiary, a medium-security prison
- Federal Prison Camp
- Federal Correctional Institution, a medium-security prison
- Sewage Treatment Plant
- Farm Area
- Federal Prison Industries
- Dairy
- Intensive Confinement Center

Several prison-wide surveys and assessments were conducted to identify contaminants of concern (COCs) and contaminant sources at the former USDB primarily due to activities such as waste management, hazardous and nonhazardous materials storage, and other activities related to onsite operations, such as vehicle maintenance and shooting practice. These assessments identified areas for further environmental study. To date, all sites are at response complete and/or no further action with the exception of the three sites with long-term monitoring (LTM) requirements subject to this contract. Those sites include:

- Washrack Site
- Wood Dump Site
- Former Army Landfill (FAL)

Clean-up at USDB has been voluntary, has followed the Comprehensive Environmental Response, Compensation, and Liability Act (CERCLA) program as mandated, and was performed under the oversight of the BRAC Clean-up Team (BCT). It is noted that none of the environmental sites within the former USDB have been the subject of federal, state, or local enforcement activities. The environmental sites were characterized, and remedial actions were conducted for the Washrack Site and Wood Dump Site. At present, a Post Site Mitigation and Monitoring Plan is in effect for both the Washrack and Wood Dump sites (ARCADIS, 2009a and 2009b). A grounds maintenance program is in place for the FAL Site (Army, 2006). Inspection of the Washrack Site is included in the Washrack Semiannual Groundwater Monitoring Reports.

1.2 Wood Dump Site History

The Wood Dump site was created by infilling an existing southwest-flowing 60 to 70 feet deep drainage. Disposal at the Wood Dump probably occurred between 1967 and 1978 and included mainly inert wastes such as wood, bricks, and concrete; and some organic matter like grasses (USEPA, 2000).

Previous investigations, beginning in 1992, included geophysical surveys, soil sampling, soil gas sampling, groundwater sampling, surface water sampling, existing soil cover thickness evaluation, extent of waste determination, a video survey of the culvert, sediment sampling, and cultural and biological resources surveys (IES, 2014). The findings of these investigations are summarized as follows:

- Geophysical anomalies were identified and noted to likely result from the high metal content in the Wood Dump and/or native material beneath the Wood Dump cover. One drum lid was found, but no evidence of any buried drums or anomalous material was found at the Wood Dump.
- Disposal at the Wood Dump probably occurred between 1967 and 1978. According to available records, including historical aerial photographs, Resource Conservation and Recovery Act hazardous wastes and ordnance/explosives were not disposed at the site. The Wood Dump fill materials include untreated lumber, particle board, plywood, Formica, tree limbs, cloth, paper, plastic, sheet metal, rebar, glass, wire, asphaltic concrete, and concrete mixed with varying amounts of locally-derived soil (clay, silt, and sand). The horizontal extent of the waste was delineated.
- Soil sample results from the clay beneath the Wood Dump did not indicate contamination from the overlying buried debris.

- Methane and low-level VOCs were detected in soil gas samples from within the waste mass. No methane and very low-level VOCs were detected in perimeter soil gas and local ambient air samples.
- Groundwater monitoring data indicated: 1) a high degree of natural geochemical variability of inorganic constituents (metals, nitrate); 2) that the groundwater is, without prior treatment, unsuitable for human consumption (calcium-bicarbonate- type water high in dissolved solids, nitrate); and 3) there was little to no indication of local groundwater impact directly related to the Wood Dump site (organic compounds when detected were at very low levels).
- The Wood Dump surface was well vegetated and irregular with local low spots that prevented surface water from running off the site. The original (nonengineered) cover thickness ranged from 0.5 feet to 7.4 feet, with local areas with no cover. Waste material consisting of logs, sheet metal, and surface debris was exposed locally. The average cover thickness was approximately 1.7 feet.
- Based on sediment sample results, surface water from the site had not impacted sediments downstream of the Wood Dump. The culvert was in relatively good condition with slight joint separation, deformation, and minor rusting seen in a few places. There was one major defect where the wall of the pipe protruded inward approximately 4 to 6 inches.
- There are no important archaeological resources at the Wood Dump site. The site mitigation grading activities would result in “no impacts” or “less than-significant impacts” to biological resources at the Wood Dump site.

From the results of these investigations, it was concluded that there was no evidence of an unacceptable risk posed by the Wood Dump. However, site mitigation measures were agreed to in order to minimize the potential for future impacts (IES, 2014). These mitigation measures included:

- Improving the condition of the culvert to assure long-term integrity
- Improving the condition of the soil cover to cover exposed waste and minimize surface water infiltration
- Improving surface water control
- Implementation of Post Mitigation Monitoring

Site mitigation was performed from 2003 to 2004 as a non-time-critical removal action and details are documented in the *Construction Quality Assurance Report* (Arcadis, 2006). Groundwater monitoring was discontinued in 2010 (IES, 2014). Semiannual inspections, periodic maintenance, and measurements of methane at the perimeter probes continue to be performed under requirements of the Post Mitigation Monitoring.

1.3 FAL Site History

The Former Army Landfill was established in the 1940s and closed in 1959, though the buried materials were unknown prior to investigation activities. Beginning in 1996, soil sampling, groundwater sampling, a geophysical survey, and a soil gas survey were performed at the FAL (Army, 2000).

The geophysical survey revealed a roughly rectangular 400-foot by 200-foot landfill with scattered metallic debris. The soil gas survey indicated the presence of several polynuclear aromatic hydrocarbons, mid-range alkanes and tetrachloroethene vapors within the landfill. Soil sampling showed concentrations of arsenic in three samples at concentrations exceeding the EPA Region IX Preliminary Remediation Goals (PRGs) for residential soil. The highest concentration of arsenic was 43.9 mg/kg from a sample taken at 5 feet below ground surface (ft bgs). Two other samples taken at 15 ft bgs had concentrations in the range of 18-19 mg/kg, comparable to the local background level of 6 to 21 mg/kg (based on nearby Vandenberg Air Force data).

Four groundwater wells were installed, and seven quarters of sampling were performed. Several constituents were detected at levels slightly above the EPA Region IX PRGs for tap water or the California maximum contaminant levels for drinking water. None of the constituents were detected consistently at any of the wells and none were detected in the down gradient well (Army, 2000).

The Site Investigation Report concluded that further action at the Site was not necessary based on an evaluation of risks associated with sampling results. A Memorandum of No-Further-Action (NFA) was submitted on December 4, 2000, and approved by the regulatory agencies (Army, 2000).

The NFA condition of the NFA stated that the site would be reviewed periodically to ensure conditions have not changed. The NFA indicated that if significant changes are observed then the NFA letter might be withdrawn. During visits to the FAL site in July 2004, representatives from the Army and Santa Barbara County observed that ground squirrels were bringing some waste material to the surface as a result of their burrowing activity. Subsequently, the BCT held a meeting to evaluate options and consider what actions should be taken to mitigate rodent burrowing. The BCT members agreed that the FAL should be restored to the conditions present when the NFA was issued. The following restoration activities were agreed to (Army, 2006):

1. The materials brought to the surface by squirrel activity would be collected and placed back in to the burrows.
2. The burrows would be backfilled with soils near the burrow.
3. The site would be surrounded with an eight-foot-tall chain link fence, equipped with a locked access gate.
4. The site would be posted with no-trespassing signs.
5. The Prison would develop, and implement, a maintenance program.
6. The Prison Maintenance Program would be formally added to the maintenance schedule so that it would become part of the Prison's routine housekeeping activities.
7. Prison staff would execute a rodent control program using an approach acceptable to Prison authorities.
8. The Army would inspect the site at least once a year and prepare and issue a letter report, which would include prison staff actions conducted during the reporting period.

Restoration activities were completed in 2005 and inspections are now performed quarterly.

2.0 Inspections

The 2021 site inspections of the Wood Dump Site and FAL were conducted by Ahtna, SBCEHS, and the BOP.

2.1 Wood Dump Site

Ahtna performed the annual inspection of the Wood Dump Site on December 3, 2021, in accordance with the project QAPP/WP (Ahtna, 2021). Ahtna inspected the cover of the wood dump for erosion, ponding, rodent burrows, and vegetation growth. Ditches, drain pipes, overside drains, and culverts were visually inspected to assess their integrity, including evidence of erosion/undercutting. The perimeter drainage ditches and drainpipes were inspected for obstructions (fallen trees, sediment buildup). The inspection checklist with site observations is provided in Appendix C, and the photographic log of the site inspection is presented in Appendix D. Figure 2 presents a map of the Wood Dump Site.

Semiannual inspections of the Wood Dump Site are conducted by SBCEHS. The 2021 semiannual inspections were conducted on June 23, 2021, and October 8, 2021, and included the inspection of the perimeter fencing and vegetation cover and monitoring of methane at perimeter probes (WD-VP-01, WD-VP-02, WD-VP-03, and WD-VP-04) using a handheld landfill gas analyzer (GEM5000). Site Inspection Reports from SBCEHS can be found in Appendix A.

2.2 Former Army Landfill

Quarterly inspections of the FAL are conducted by the BOP. The 2021 quarterly inspections were conducted on February 2, May 2, August 8, and November 7, 2021, and included the inspection of the perimeter fencing, vegetation cover, and culverts. Site Inspection Reports from the BOP can be found in Appendix B.

3.0 Inspection Results and Recommendations

3.1 Wood Dump Site

Based on the annual inspection conducted by Ahtna and the review of the semiannual inspections conducted by SBCEHS (Appendix A), the Wood Dump Site is overall in good condition. Ahtna's site inspection observations are presented in Appendix C, and site photos can be found in Appendix D.

The cover of the Wood Dump is well vegetated, with minimal animal burrows (Photos 13-15). Woody vegetation is encroaching on the cover on all sides, with some medium-sized vegetation located on the cover. Erosion control ditches were difficult to identify during the inspection and consisted of a slight depression with areas where erosion control netting was visible. Woody vegetation is present along erosion control ditches (west and east; Photo 11 and Photo 12). A few areas of inspection (concrete v-ditches (Photo 7 and Photo 8), drain inlets (Photo 9 and Photo 10), overside drain inlets (Photo 1 and Photo 2)) had sediment and debris buildup.

Methane was detected at WD-VP-02 (0.2%/v) during the first semiannual inspection in June 2021. During the October inspection, methane was detected at 0.1%/v at all four probes (Appendix A). Field measurements were collected using the GEM5000 multi-gas meter which has a manufacturer-reported uncertainty of $\pm 0.3\%/v$ (LANDTEC, 2017).

It is recommended that any sediment buildup and debris be removed from ditches and drain inlets and that woody debris be removed from the Wood Dump Cover.

3.2 Former Army Landfill

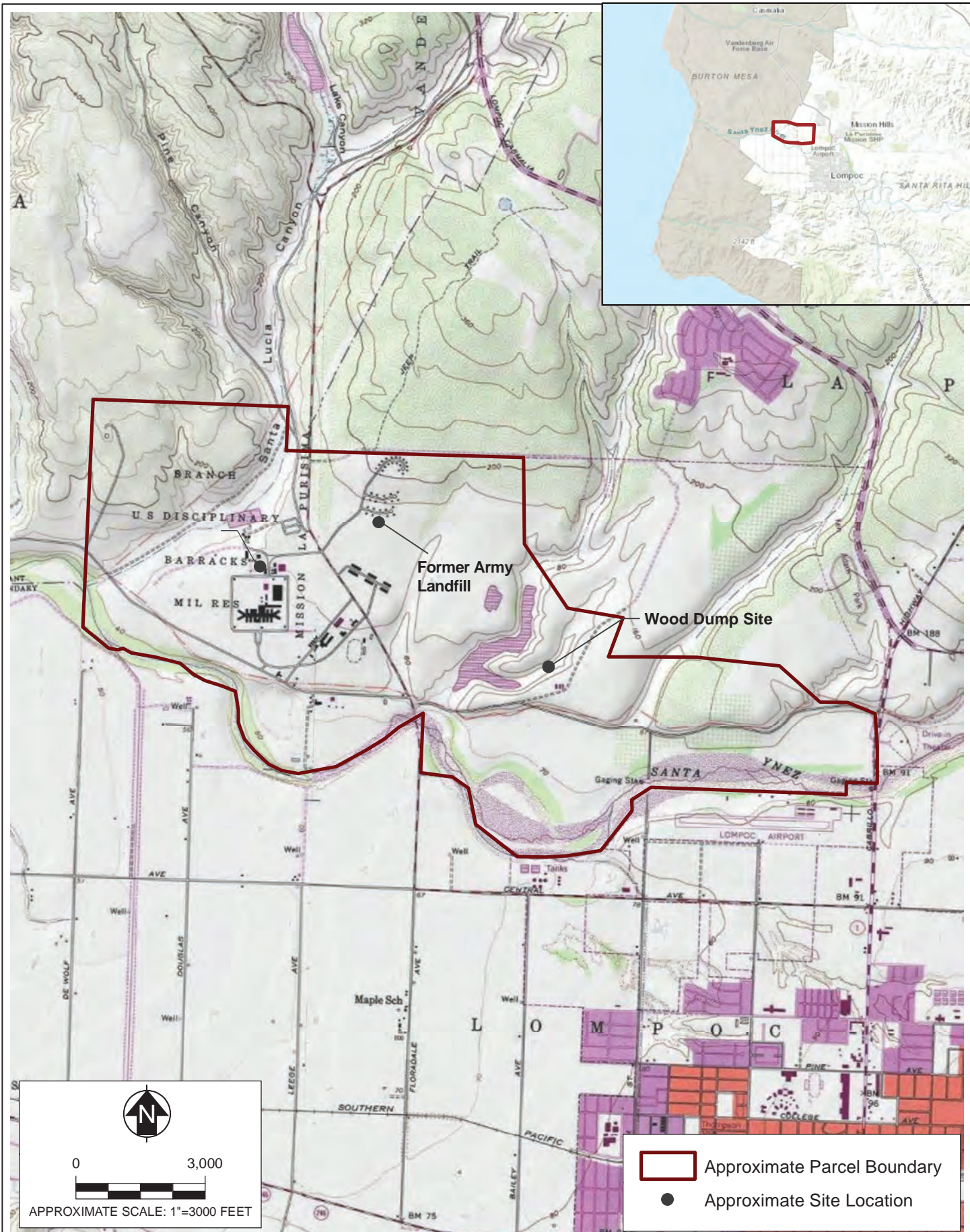
Based on the review of the quarterly inspection reports conducted by the BOP (Appendix B), the FAL is in good condition. The fencing is intact, there are no signs of animal burrows near the fence line, and the site is mowed periodically.

It is recommended that the current maintenance and monitoring plan continue as scheduled.

4.0 References

- Ahtna Global, LLC (Ahtna), 2021. *Quality Assurance Project Plan/Work Plan*, Environmental Long-term Monitoring, Former U.S. Disciplinary Barracks, Lompoc, CA. November.
- ARCADIS. 2006. Final Construction Quality Assurance Report – Wood Dump Site Mitigation. August.
- ARCADIS, 2009a. *Final Post Mitigation Monitoring Plan (MMP), Washrack Site, Former United States Disciplinary Barracks, Lompoc, California*. January 29.
- ARCADIS, 2009b. *Final Post Site Mitigation Maintenance and Monitoring Plan, Wood Dump Site, Former United States Disciplinary Barracks, Lompoc, California*. December 09.
- U.S. Department of the Army (Army), 2000. *Memorandum of No Further Action, Former Army Landfill, Former U.S. Disciplinary Barracks, Lompoc, California*. December 4.
- Army, 2006. *Restoration of Site Conditions at the Former Army Landfill, Former U.S. Disciplinary Barracks, Lompoc, California*. July.
- Army, 2014. *Change Memorandum—Final Post Site Mitigation, Maintenance and Monitoring Plan, Wood Dump Site, Former United States. Disciplinary Barracks, Lompoc, California*. May.
- Integrated Environmental Services, Inc. (IES), 2014. *Wood Dump Site Second Five-Year Review Report, Former US Disciplinary Barracks, Lompoc, California*. December 12.
- LANDTEC, 2017. *GEM 5000 Portable Gas Analyzer Instrumentation*. https://www.landtecnica.com/wp-content/uploads/2017/04/gem5000_2017_master_cutsheet_2387_reduced.pdf
- United States Environmental Protection Agency (USEPA), 2000. *Aerial Photographic Analysis, United States Disciplinary Barracks Site, Lompoc, California*. March.

Figures

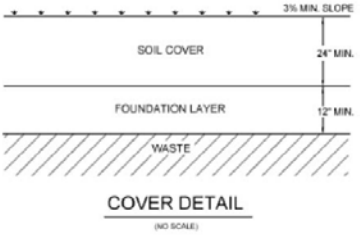
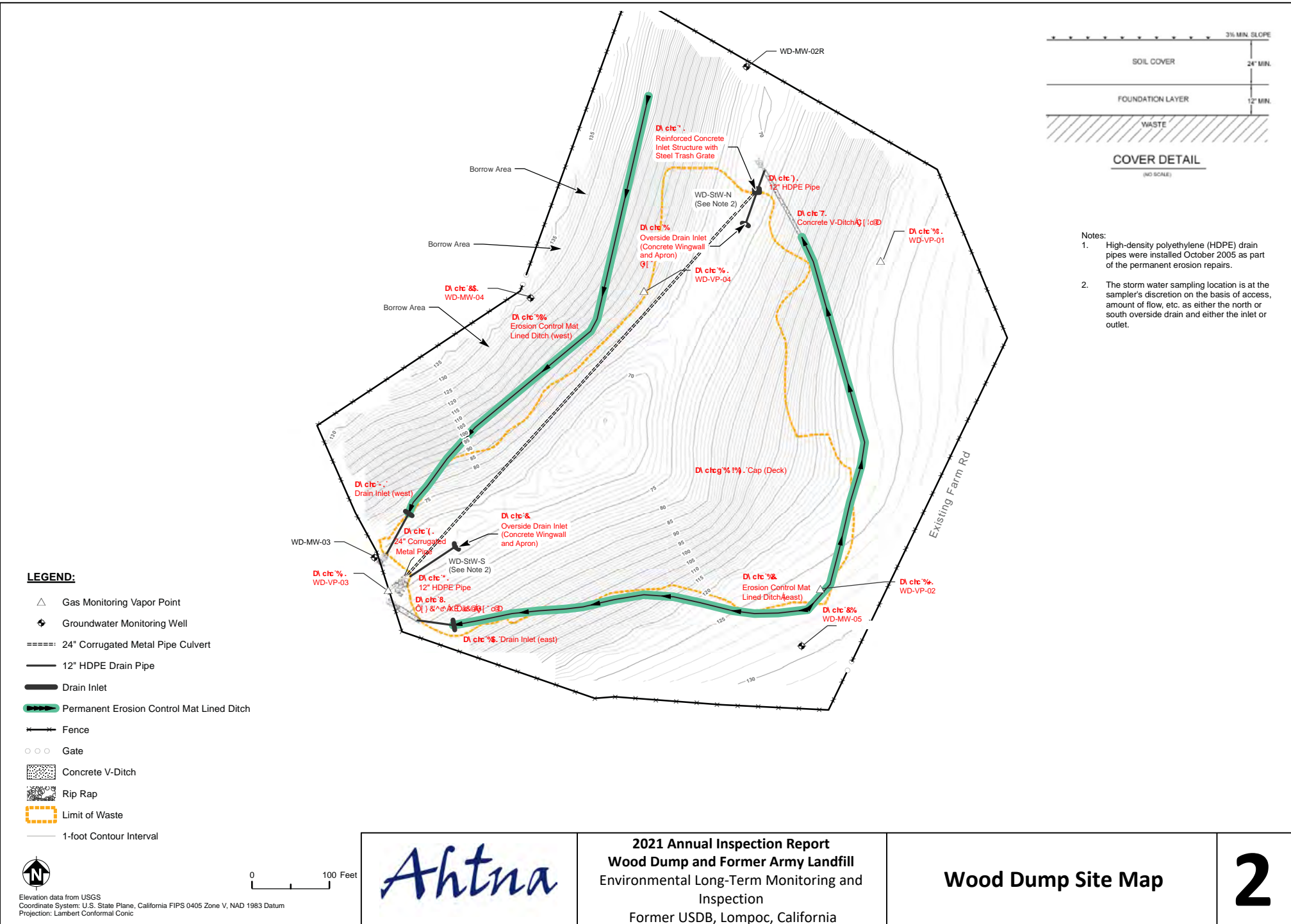


2021 Annual Inspection Report
Wood Dump and Former Army Landfill
 Environmental Long-Term Monitoring
 and Inspection
 Former USDB, Lompoc, California

Site Location Map



1

Source: ERRG, 2021. Washrack Site Second Semiannual 2020 Groundwater Monitoring Report, Former United States Disciplinary Barracks, Lompoc, California



- Notes:
1. High-density polyethylene (HDPE) drain pipes were installed October 2005 as part of the permanent erosion repairs.
 2. The storm water sampling location is at the sampler's discretion on the basis of access, amount of flow, etc. as either the north or south overside drain and either the inlet or outlet.

- LEGEND:**
- △ Gas Monitoring Vapor Point
 - ⊕ Groundwater Monitoring Well
 - ===== 24" Corrugated Metal Pipe Culvert
 - 12" HDPE Drain Pipe
 - Drain Inlet
 - Permanent Erosion Control Mat Lined Ditch
 - ✂ Fence
 - Gate
 - Concrete V-Ditch
 - Rip Rap
 - Limit of Waste
 - 1-foot Contour Interval

Elevation data from USGS
 Coordinate System: U.S. State Plane, California FIPS 0405 Zone V, NAD 1983 Datum
 Projection: Lambert Conformal Conic

	<p>2021 Annual Inspection Report Wood Dump and Former Army Landfill Environmental Long-Term Monitoring and Inspection Former USDB, Lompoc, California</p>	<p>Wood Dump Site Map</p>	<p>2</p>
---	---	----------------------------------	-----------------

Source: Final Post Site Mitigation Maintenance and Monitoring Plan, Wood Dump Site, Former United States Disciplinary Barracks, Lompoc, California (Revision 1) (ARCADIS, 2005)

Appendices

Appendix A. Santa Barbara County Environmental Health Services Site Inspection Reports

Closed Disposal Site Inspection Report (188)

Enforcement Agency:				Local Inspection ID:	
County of Santa Barbara					
SWIS Facility File Number (99-xx-9999)		Inspection Date		Program Code	
42-CR-0019		6/23/2021		LEA Periodic	
Time In	10:30 AM	Time Out	1:00 PM	Inspection Time	2.5 hours
Facility Name			Received By		
Lompoc Federal Prison Wwds/LF			US Penitentiary, Lompoc		
Facility Location			Owner Name		
N Santa Ynez Rvr E Of Snta Lucia Cyn Rd, Lompoc 93437			US Penitentiary, Lompoc		
Inspector			Also Present (Name)		
Yosuke Yamada			Fernando Pena		

THE ABOVE FACILITY WAS INSPECTED FOR COMPLIANCE WITH APPLICABLE SECTIONS OF DIVISION 30 OF PUBLIC RESOURCES CODE (PRC) AND TITLE 14 AND TITLE 27 CALIFORNIA CODE OF REGULATIONS (CCR)

X	No Violations or Areas of Concern
----------	--

Inspection Report Comments:
<p>Weather: Clear, Calm 57 degrees F.</p> <p>Routine Semi-Annual Inspection.</p> <p>Old Army Barracks Site Notes:</p> <ol style="list-style-type: none"> 1) Site is secure with fencing well maintained. Vegetative cover well established. 2) Observed noticeable exposed debris (glass shards) dug up by rodent animals over the entire surface of the dumpsite. 3) Rodent traps maintained operative. <p>Wood Dump Site Notes:</p> <ol style="list-style-type: none"> 1) Site is secure with fencing well maintained. 2) Vegetative cover well established. Please maintain accessible by mowing the site to each gas monitoring well. 3) Using a Landtech Gem 5000, the LEA tested for methane gas from perimeter probes #1, #2, #3, and #4. <ul style="list-style-type: none"> #1 - 0.0% #2 - 0.2% #3 - 0.0% #4 - 0.0%

Closed Disposal Site Inspection Report (188)
Lompoc Federal Prison Wwds/LF (42-CR-0019)
10/8/2021

Inspection Information

Inspected By: Santa Barbara County	Local Inspection ID:
Inspection Date: 10/8/2021	Time In: 10:30 AM
Inspection Type: Periodic	Time Out: 12:30 PM
Inspector: Yosuke Yamada	Inspection Duration: 2 hours
Operator: US Penitentiary, Lompoc	Status: Submitted
Also Present (Name): Greg Lux	

Facility/Activity Information

Enforcement Agency: County of Santa Barbara	SWIS Number: 42-CR-0019
Facility: Lompoc Federal Prison Wwds/LF N Santa Ynez Rvr E Of Snta Lucia Cyn Rd Lompoc, CA 93437	
Activity: Solid Waste Disposal Site	
Operational Status: Closed	Regulatory Status: Unpermitted
Land Owners(s): US Penitentiary, Lompoc	

The above facility was inspected for compliance with applicable sections of Division 30 of the Public Resources Code (PRC) and Title 14 and Title 27, California Code of Regulations (CCR).

No Violations

No Areas of Concern

Inspection Report Comments

Weather: Clear, Calm 61 degrees F.

Routine Semi-Annual Inspection.

Old Army Barracks Site Notes:

- 1) Site is secure with fencing well maintained. Vegetative cover well established.
- 2) Observed noticeable exposed debris (glass shards) dug up by rodent animals over the entire surface of the dumpsite.
- 3) Rodent traps maintained operative.

Closed Disposal Site Inspection Report (188)
Lompoc Federal Prison Wwds/LF (42-CR-0019)
10/8/2021

Wood Dump Site Notes:

- 1) Site is secure with fencing well maintained.
- 2) Vegetative cover well established.
- 3) Using a Landtech Gem 5000, the LEA tested for methane gas from perimeter probes #1, #2, #3, and #4.
#1 - 0.1%
#2 - 0.1%
#3 - 0.1%
#4 - 0.1%

No Attachments

Appendix B. Bureau of Prisons Site Inspection Reports

**FBOP WOPM
Planned Event
LOX**

**61056
2/7/2021
ET2 CMS OFC 2/BROWN**

WO Description: FCC QTR (FAL) LANDFILL INSP

Site:
Building:
Location:

If Applicable, ensure all safety precautions are followed to include but not limited to "Lockout/Tagout, Confined Space Entry, & Fall Protection"

Ensure all equipment has a MWI label affixed that is in clear view and legible. Ensure all MWI information is correct.

Schedule: 36094

This Inspection is to be filed with the Facilities Management Office upon completion.

AND WITH THE

ARMY FOR INCLUSION FOR THEIR ROUTINE REPORTING

Cmp Freq Proc # NAP
 Q 30529

1. FOLLOW UP WITH STAFF TO ENSURE SAID INSPECTION/TASK WILL BE CONDUCTED IN A TIMELY MANNER.
2. TASK FOR SAID INSPECTION MAY BE INCLUDED BUT THIS IS ONLY FOR REFERENCE PURPOSES.
3. COMPILE REPORT.
4. FILE AS NECESSARY. REQUIRED DOCUMENTS MAY INCLUDE BUT NOT LIMITED TO: ENTRANCE MEMOS, RESIDENCY FORM, PROCUREMENT DOCUMENTS, INSPECTION REPORT, A COPY OF THE COMPLETED PM/PE THAT JUSTIFIED SAID INSPECTION/TEST, POA'S WITH THE MWR, IF APPLICABLE.
5. PREPARE DOCUMENTS FOR WORK PROGRAMMING.
6. SEND TO REGION, IF APPLICABLE (ELEVATOR, GAS, BOILERS, B&G, OPERATIONAL REVIEW).

Cmp Freq Proc # NAP
 Q 30701

FORMER ARMY LANDFILL, BRAC

THERE ARE FOUR AREAS TO BE INSPECTED:

- 1.) FARM FUEL SITE: LOCATED APPROXIMATELY 500 FEET SOUTH OF THE FCI, BETWEEN THE FPC AND THE DAIRY. (Capped Off)
- 2.) WASH RACK SITE: LOCATED IMMEDIATELY NORTH OF THE FCC MED AND TO THE WEST OF THE TRANSPORTATION BUILDING.
- 3.) FORMER ARMY LANDFILL SITE: LOCATED BETWEEN THE TWO STAFF HOUSING AREAS.
- 4.) WOOD DUMP SITE: THIS IS A 7 ACRE CANYON SITE THAT IS SITUATED GENERALLY NORTH AND SOUTH TRENDING CANYON (COWBOY AREA).

INSPECTION AS RELATED TO ABOVE:

WASH RACK SITE:

- 1.) IS THERE EVIDENCE OF DISTURBED SOIL BELOW 2'? YES _____ NO X
IS THERE EVIDENCE OF CONSTRUCTION? YES _____ NO X
- 2.) ARE VEHICLES PARKED UPON THE WELLS? YES _____ NO X
IS THERE EVIDENCE OF VEHICLES, EQUIPMENT AND OR STORAGE CONTAINERS LEAKING? YES _____ NO X

LANDFILL:

- 3.) IS FENCING INTACT? YES X NO _____
ARE THERE SIGN OF ANIMALS BURROWING UNDER AND/OR NEAR THE FENCE LINE? YES X NO _____
SITE IS MOWED PERIODICALLY? YES X NO DB

WOOD DUMP SITE:

- 4.) IS FENCING INTACT? YES X NO _____
IS THERE SIGNS OF ANIMALS BURROWING UNDER AND/OR NEAR THE FENCE LINE? YES X NO _____
IS VEGETATION PRESENT? YES X NO _____
ARE CULVERTS CLEAN OF DEBRIS FOR FREE FLOW OF RUNOFF? YES X NO _____

SELF GENERATE A WORK ORDER TO RESOLVE ANY DEFICIENCIES NOTED

**THE ENTIRE INFORMATIONAL PACKET CAN BE FOUND IN P:/ DRIVE, FACILITIES, UNDER TESTING-BRAC.

**FBOP WOPM
Planned Event
LOX**

**61056
2/7/2021
ET2 CMS OFC 2/BROWN**

PROVIDE A COPY (ELECTRONIC VERSION) OF THIS REPORT TO THE ARMY FOR INCLUSION IN ROUTINE REPORTING. SEND TO:

Army BRACD

- *Ms. Jennifer Adawale (COR), Jen.M.Adewale.civ@mail.mil, 703.602.6410 (contracting only)
- *Mr Webster W. (Hank) Proctor (PM), webster.w.proctor.civ@mail.mil, 703-344-8703
- *Mr. Scott Armstrong (Army BEC), scott.armstrong@calibresys.com, 916-261-4577
- *Ms. Heathe Elliott (Army BEC), Heather.Elliott@calibresys.com, 256-217-1678

US Bureau of Prisons HQ

- *Mr. Thomas (Tom) Webber, txwebber@bop.gov, 202.514.6470 (Chief, Capacity Planning, Site Selection)


Central Coast Regional Water Quality Control Board

- * Mr. Bryan Little, Bryan.Little@waterboards.ca.gov, 805.549.3704 (Engineering Geologist, CCRWQCB PM for the Lompoc Washrack site) (1,2)
- *Ms. Sheila Soderberg, ssoderberg@waterboards.ca.gov, 805.549.3592 (DoD Sites lead) (Ms. Soderberg is the CCRWQCB Supervisor)

County Of Santa Barbara

- Mrs Norma Campos Bernal Norma.CamposBernal@sbcphd.org
- Mr. Yosuke.Yamada@sbcphd.org, 805.346.8466

LIST BELOW COMMENTS AND ALL MATERIAL USED.

<p>ALL SITES Inspected with <u>NO</u> Issues.</p>	Act. Staff Hours: <u>1.0</u>
	Material Cost: <u>0</u>
	Date Completed: <u>2-8-21</u>
Staff Signature	
	

FBOP WOPM
Planned Event
LOX

63167
5/2/2021
ET2 CMS OFC 2/PENA

WO Description: FCC QTR (FAL) LANDFILL INSP

Site:
Building:
Location:

If Applicable, ensure all safety precautions are followed to include but not limited to "Lockout/Tagout, Confined Space Entry, & Fall Protection"

Ensure all equipment has a MWI label affixed that is in clear view and legible. Ensure all MWI information is correct.

Schedule: 36094

This Inspection is to be filed with the Facilities Management Office upon completion.

AND WITH THE

ARMY FOR INCLUSION FOR THEIR ROUTINE REPORTING

Cmp Freq Proc # NAP
 Q 30529

1. FOLLOW UP WITH STAFF TO ENSURE SAID INSPECTION/TASK WILL BE CONDUCTED IN A TIMELY MANNER.
2. TASK FOR SAID INSPECTION MAY BE INCLUDED BUT THIS IS ONLY FOR REFERENCE PURPOSES.
3. COMPILE REPORT.
4. FILE AS NECESSARY. REQUIRED DOCUMENTS MAY INCLUDE BUT NOT LIMITED TO: ENTRANCE MEMOS, RESIDENCY FORM, PROCUREMENT DOCUMENTS, INSPECTION REPORT, A COPY OF THE COMPLETED PM/PE THAT JUSTIFIED SAID INSPECTION/TEST, POAS WITH THE MWR, IF APPLICABLE.
5. PREPARE DOCUMENTS FOR WORK PROGRAMMING.
6. SEND TO REGION, IF APPLICABLE (ELEVATOR, GAS, BOILERS, B&G, OPERATIONAL REVIEW).

Cmp Freq Proc # NAP
 Q 30701

FORMER ARMY LANDFILL, BRAC

THERE ARE FOUR AREAS TO BE INSPECTED:

- 1.) FARM FUEL SITE: LOCATED APPROXIMATELY 500 FEET SOUTH OF THE FCI, BETWEEN THE FPC AND THE DAIRY. (Capped Off)
- 2.) WASH RACK SITE: LOCATED IMMEDIATELY NORTH OF THE FCC MED AND TO THE WEST OF THE TRANSPORTATION BUILDING.
- 3.) FORMER ARMY LANDFILL SITE: LOCATED BETWEEN THE TWO STAFF HOUSING AREAS.
- 4.) WOOD DUMP SITE: THIS IS A 7 ACRE CANYON SITE THAT IS SITUATED GENERALLY NORTH AND SOUTH TRENDING CANYON (COWBOY AREA).

INSPECTION AS RELATED TO ABOVE:

WASH RACK SITE:

- 1.) IS THERE EVIDENCE OF DISTURBED SOIL BELOW 2"? YES _____ NO
IS THERE EVIDENCE OF CONSTRUCTION? YES _____ NO
- 2.) ARE VEHICLES PARKED UPON THE WELLS? YES _____ NO
IS THERE EVIDENCE OF VEHICLES, EQUIPMENT AND OR STORAGE CONTAINERS LEAKING? YES _____ NO

LANDFILL:

- 3.) IS FENCING INTACT? YES _____ NO
ARE THERE SIGN OF ANIMALS BURROWING UNDER AND/OR NEAR THE FENCE LINE? YES NO _____
SITE IS MOWED PERIODICALLY? YES NO _____

WOOD DUMP SITE:

- 4.) IS FENCING INTACT? YES NO _____
IS THERE SIGNS OF ANIMALS BURROWING UNDER AND/OR NEAR THE FENCE LINE? YES NO _____
IS VEGETATION PRESENT? YES NO _____

FBOP WOPM
Planned Event
LOX

63167
5/2/2021
ET2 CMS OFC 2/PENA

ARE CULVERTS CLEAN OF DEBRIS FOR FREE FLOW OF RUNOFF? YES NO

SELF GENERATE A WORK ORDER TO RESOLVE ANY DEFICIENCIES NOTED

**THE ENTIRE INFORMATIONAL PACKET CAN BE FOUND IN P:/ DRIVE, FACILITIES, UNDER TESTING-BRAC.

PROVIDE A COPY (ELECTRONIC VERSION) OF THIS REPORT TO THE ARMY FOR INCLUSION IN ROUTINE REPORTING. SEND TO:

Army BRACD

*Ms. Jennifer Adawale (COR), Jen.M.Adawale.civ@mail.mil, 703.602.6410 (contracting only)

*Mr Webster W. (Hank) Proctor (PM), webster.w.proctor.civ@mail.mil, 703-344-8703

*Mr. Scott Armstrong (Army BEC), scottarmstrong@calibresys.com, 916-261-4577

*Ms. Heath Elliott (Army BEC), Heather.Elliott@calibresys.com, 256-217-1678

US Bureau of Prisons HQ

*Mr. Thomas (Tom) Webber, twebber@bop.gov, 202.514.6470 (Chief, Capacity Planning, Site Selection)

Central Coast Regional Water Quality Control Board

* Mr. Bryan Little, Bryan.Little@waterboards.ca.gov, 805.549.3704 (Engineering Geologist, CCRWQCB PM for the Lompoc Washrack site) (1,2)

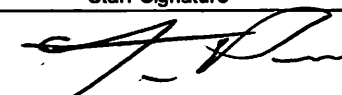
*Ms. Sheila Soderberg, ssoderberg@waterboards.ca.gov, 805.549.3592 (DoD Sites lead) (Ms. Soderberg is the CCRWQCB Supervisor)

County Of Santa Barbara

Mrs Norma Campos Bernal Norma.CamposBernal@sbcphd.org

Mr. Yosuke.Yamada@sbcphd.org, 805.346.8466

LIST BELOW COMMENTS AND ALL MATERIAL USED.

	Act. Staff Hours: <u>2.5</u>
	Material Cost: <u>Ø</u>
	Date Completed: <u>6/23/2021</u>
	Staff Signature 

FBOP WOPM
Planned Event
LOX

65582
8/8/2021
ET2 CMS OFC 2/PENA

WO Description: FCC QTR (FAL) LANDFILL INSP

Site:
Building:
Location:

If Applicable, ensure all safety precautions are followed to include but not limited to "Lockout/Tagout, Confined Space Entry, & Fall Protection"

Ensure all equipment has a MWM label affixed that is in clear view and legible. Ensure all MWM information is correct.

Schedule: 36094

This Inspection is to be filed with the Facilities Management Office upon completion.

AND WITH THE

ARMY FOR INCLUSION FOR THEIR ROUTINE REPORTING

Cmp Freq Proc # NAP
 Q 30529

1. FOLLOW UP WITH STAFF TO ENSURE SAID INSPECTION/TASK WILL BE CONDUCTED IN A TIMELY MANNER.
2. TASK FOR SAID INSPECTION MAY BE INCLUDED BUT THIS IS ONLY FOR REFERENCE PURPOSES.
3. COMPILE REPORT.
4. FILE AS NECESSARY. REQUIRED DOCUMENTS MAY INCLUDE BUT NOT LIMITED TO: ENTRANCE MEMOS, RESIDENCY FORM, PROCUREMENT DOCUMENTS, INSPECTION REPORT, A COPY OF THE COMPLETED PM/PE THAT JUSTIFIED SAID INSPECTION/TEST, POA'S WITH THE MWR, IF APPLICABLE.
5. PREPARE DOCUMENTS FOR WORK PROGRAMMING.
6. SEND TO REGION, IF APPLICABLE (ELEVATOR, GAS, BOILERS, B&G, OPERATIONAL REVIEW).

Cmp Freq Proc # NAP
 Q 30701

FORMER ARMY LANDFILL, BRAC

THERE ARE FOUR AREAS TO BE INSPECTED:

- 1.) FARM FUEL SITE: LOCATED APPROXIMATELY 500 FEET SOUTH OF THE FCI, BETWEEN THE FPC AND THE DAIRY. (Capped Off)
- 2.) WASH RACK SITE: LOCATED IMMEDIATELY NORTH OF THE FCC MED AND TO THE WEST OF THE TRANSPORTATION BUILDING.
- 3.) FORMER ARMY LANDFILL SITE: LOCATED BETWEEN THE TWO STAFF HOUSING AREAS.
- 4.) WOOD DUMP SITE: THIS IS A 7 ACRE CANYON SITE THAT IS SITUATED GENERALLY NORTH AND SOUTH TRENDING CANYON (COWBOY AREA).

INSPECTION AS RELATED TO ABOVE:

WASH RACK SITE:

- 1.) IS THERE EVIDENCE OF DISTURBED SOIL BELOW 2"? YES _____ NO
IS THERE EVIDENCE OF CONSTRUCTION? YES _____ NO
- 2.) ARE VEHICLES PARKED UPON THE WELLS? YES _____ NO
IS THERE EVIDENCE OF VEHICLES, EQUIPMENT AND OR STORAGE CONTAINERS LEAKING? YES _____ NO

LANDFILL:

- 3.) IS FENCING INTACT? YES NO _____
ARE THERE SIGN OF ANIMALS BURROWING UNDER AND/OR NEAR THE FENCE LINE? YES NO _____
SITE IS MOWED PERIODICALLY? YES NO _____

WOOD DUMP SITE:

- 4.) IS FENCING INTACT? YES NO _____
IS THERE SIGNS OF ANIMALS BURROWING UNDER AND/OR NEAR THE FENCE LINE? YES NO _____
IS VEGETATION PRESENT? YES NO _____

FBOP WOPM
Planned Event
LOX

65582
8/8/2021
ET2 CMS OFC 2/PENA

ARE CULVERTS CLEAN OF DEBRIS FOR FREE FLOW OF RUNOFF? YES NO

SELF GENERATE A WORK ORDER TO RESOLVE ANY DEFICIENCIES NOTED

**THE ENTIRE INFORMATIONAL PACKET CAN BE FOUND IN P:/ DRIVE, FACILITIES, UNDER TESTING-BRAC.

PROVIDE A COPY (ELECTRONIC VERSION) OF THIS REPORT TO THE ARMY FOR INCLUSION IN ROUTINE REPORTING. SEND TO:

Army BRACD

*Ms. Jennifer Adawale (COR), Jen.M.Adewale.civ@mail.mil, 703.602.6410 (contracting only)

*Mr Webster W. (Hank) Proctor (PM), webster.w.proctor.civ@mail.mil, 703-344-8703

*Mr. Scott Armstrong (Army BEC), scottarmstrong@calibresys.com, 916-261-4577

*Ms. Heath Elliott (Army BEC), Heather.Elliott@calibresys.com, 256-217-1678

US Bureau of Prisons HQ

*Mr. Thomas (Tom) Webber, twebber@bop.gov, 202.514.6470 (Chief, Capacity Planning, Site Selection)

Central Coast Regional Water Quality Control Board

* Mr. Bryan Little, Bryan.Little@waterboards.ca.gov, 805.549.3704 (Engineering Geologist, CCRWQCB PM for the Lompoc Washrack site) (1,2)

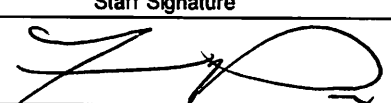
*Ms. Sheila Soderberg, ssoderberg@waterboards.ca.gov, 805.549.3592 (DoD Sites lead) (Ms. Soderberg is the CCRWQCB Supervisor)

County Of Santa Barbara

Mrs Norma Campos Bernal Norma.CamposBernal@sbcphd.org

Mr. Yosuke.Yamada@sbcphd.org, 805.346.8466

LIST BELOW COMMENTS AND ALL MATERIAL USED.

	Act. Staff Hours: <u>2.5</u>
	Material Cost: <u>0</u>
	Date Completed: <u>10/08/2021</u>
	Staff Signature
	

FBOP WOPM
Planned Event
LOX

67910
11/7/2021
ET2 CMS OFC 2/PENA

WO Description: FCC QTR (FAL) LANDFILL INSP

Site:

Building:

Location:

If Applicable, ensure all safety precautions are followed to include but not limited to "Lockout/Tagout, Confined Space Entry, & Fall Protection"

Ensure all equipment has a MWI label affixed that is in clear view and legible. Ensure all MWI information is correct.

Schedule: 36094

This Inspection is to be filed with the Facilities Management Office upon completion.

AND WITH THE

ARMY FOR INCLUSION FOR THEIR ROUTINE REPORTING

Cmp Freq Proc # NAP

Q Q 30529

1. FOLLOW UP WITH STAFF TO ENSURE SAID INSPECTION/TASK WILL BE CONDUCTED IN A TIMELY MANNER.
2. TASK FOR SAID INSPECTION MAY BE INCLUDED BUT THIS IS ONLY FOR REFERENCE PURPOSES.
3. COMPILE REPORT.
4. FILE AS NECESSARY. REQUIRED DOCUMENTS MAY INCLUDE BUT NOT LIMITED TO: ENTRANCE MEMOS, RESIDENCY FORM, PROCUREMENT DOCUMENTS, INSPECTION REPORT, A COPY OF THE COMPLETED PM/PE THAT JUSTIFIED SAID INSPECTION/TEST, POA'S WITH THE MWR, IF APPLICABLE.
5. PREPARE DOCUMENTS FOR WORK PROGRAMMING.
6. SEND TO REGION, IF APPLICABLE (ELEVATOR, GAS, BOILERS, B&G, OPERATIONAL REVIEW).

Cmp Freq Proc # NAP

Q Q 30701

FORMER ARMY LANDFILL, BRAC

THERE ARE FOUR AREAS TO BE INSPECTED:

- 1.) FARM FUEL SITE: LOCATED APPROXIMATELY 500 FEET SOUTH OF THE FCI, BETWEEN THE FPC AND THE DAIRY. (Capped Off)
- 2.) WASH RACK SITE: LOCATED IMMEDIATELY NORTH OF THE FCC MED AND TO THE WEST OF THE TRANSPORTATION BUILDING.
- 3.) FORMER ARMY LANDFILL SITE: LOCATED BETWEEN THE TWO STAFF HOUSING AREAS.
- 4.) WOOD DUMP SITE: THIS IS A 7 ACRE CANYON SITE THAT IS SITUATED GENERALLY NORTH AND SOUTH TRENDING CANYON (COWBOY AREA).

INSPECTION AS RELATED TO ABOVE:

WASH RACK SITE:

- 1.) IS THERE EVIDENCE OF DISTURBED SOIL BELOW 2"? YES _____ NO X
IS THERE EVIDENCE OF CONSTRUCTION? YES _____ NO X
- 2.) ARE VEHICLES PARKED UPON THE WELLS? YES _____ NO X
IS THERE EVIDENCE OF VEHICLES, EQUIPMENT AND OR STORAGE CONTAINERS LEAKING? YES _____ NO X

LANDFILL:

- 3.) IS FENCING INTACT? YES X NO _____
ARE THERE SIGN OF ANIMALS BURROWING UNDER AND/OR NEAR THE FENCE LINE? YES _____ NO X
SITE IS MOWED PERIODICALLY? YES X NO _____

WOOD DUMP SITE:

- 4.) IS FENCING INTACT? YES X NO _____
IS THERE SIGNS OF ANIMALS BURROWING UNDER AND/OR NEAR THE FENCE LINE? YES _____ NO X
IS VEGETATION PRESENT? YES X NO _____

**FBOP WOPM
Planned Event
LOX**

**67910
11/7/2021
ET2 CMS OFC 2/PENA**

ARE CULVERTS CLEAN OF DEBRIS FOR FREE FLOW OF RUNOFF? YES NO

SELF GENERATE A WORK ORDER TO RESOLVE ANY DEFICIENCIES NOTED

**THE ENTIRE INFORMATIONAL PACKET CAN BE FOUND IN P:/ DRIVE, FACILITIES, UNDER TESTING-BRAC.

PROVIDE A COPY (ELECTRONIC VERSION) OF THIS REPORT TO THE ARMY FOR INCLUSION IN ROUTINE REPORTING. SEND TO:

Army BRACD

- *Ms. Jennifer Adawale (COR), Jen.M.Adewale.civ@mail.mil, 703.602.6410 (contracting only)
- *Mr Webster W. (Hank) Proctor (PM), webster.w.proctor.civ@mail.mil, 703-344-8703
- *Mr. Scott Armstrong (Army BEC), scottarmstrong@calibresys.com, 916-261-4577
- *Ms. Heathe Elliott (Army BEC), Heather.Elliott@calibresys.com, 256-217-1678

US Bureau of Prisons HQ

- *Mr. Thomas (Tom) Webber, twebber@bop.gov, 202.514.6470 (Chief, Capacity Planning, Site Selection)


Central Coast Regional Water Quality Control Board

- * Mr. Bryan Little, Bryan.Little@waterboards.ca.gov, 805.549.3704 (Engineering Geologist, CCRWQCB PM for the Lompoc Washrack site) (1,2)
- *Ms. Sheila Soderberg, ssoderberg@waterboards.ca.gov, 805.549.3592 (DoD Sites lead) (Ms. Soderberg is the CCRWQCB Supervisor)

County Of Santa Barbara

- Mrs Norma Campos Bernal Norma.CamposBernal@sbcphd.org
- Mr. Yosuke.Yamada@sbcphd.org, 805.346.8466

LIST BELOW COMMENTS AND ALL MATERIAL USED.

All sites inspected, no issues found.	Act. Staff Hours: _____ 2.50
	Material Cost: _____ \emptyset
	Date Completed: _____ 11/10/2021
	Staff Signature
	

Appendix C. Wood Dump Site Inspection Checklist

Wood Dump Inspection Checklist

Site: USDB Lompoc

Date: 12/3/2021

Weather: Fog

Project No.: 21044.006.01

Inspected By:

J. Feduck/O.Chu

Temperature: 50F

Inspection Point	Inspected		Comments/Notes
Cover (Deck)	<u>Yes</u>	No	Well vegetated. Woody vegetation encroaching on the cover (deck). Sparse woody vegetation currently on cover (deck). Minimal animal burrows.
Overside Drain Inlet (North)	<u>Yes</u>	No	Concrete appears in good condition. No debris inside pipe. Some sediment and debris on concrete pad
Overside Drain Inlet (South)	<u>Yes</u>	No	Concrete appears in good condition. Minimal debris in the inlet.
24" Corrugate Metal Pipe Culvert (North)	<u>Yes</u>	No	Appears in good condition. No debris inside pipe. Steel trash grate in good condition. No debris.
24" Corrugate Metal Pipe Culvert (South)	<u>Yes</u>	No	Concrete riprap extending from culvert. Culvert appears in good condition. No debris. Difficult to access due to woody vegetation surrounding outlet.
12" HDPE Drain Pipe (North)	<u>Yes</u>	No	Appears in good condition. No collapse/cracking noted. No debris. Located 3' east of 24" culvert (north).
12" HDPE Drain Pipe (South)	<u>Yes</u>	No	Appears in good condition. No cracking/collapse noted. Some woody vegetation and concrete riprap surrounding outlet. Located 1' east of 24" culvert (south).
Concrete V-Ditch (North)	<u>Yes</u>	No	Appears in good condition. Areas with soil buildup and woody debris.
Concrete V-Ditch (South)	<u>Yes</u>	No	Soil buildup, growing grassy vegetation inside the v-ditch. Concrete appears in good condition.
Drain Inlet (North)	<u>Yes</u>	No	Corrugated 12" HDPE pipe appears in good condition (No cracking/collapse). Held in place with concrete. Sediment and debris blocking 1/2 the pipe diameter.
Drain Inlet (South)	<u>Yes</u>	No	Corrugated 12" HDPE pipe appears in good condition (No cracking/collapse). Soil/debris buildup at inlet.
Reinforced Concrete Inlet Structure	<u>Yes</u>	No	Surrounding 24" Culvert (north)- appears in good condition. No significant cracks. Very minimal debris located inside the structure.

Wood Dump Inspection Checklist

Site: USDB Lompoc

Date: 12/3/2021

Weather: Fog

Project No.: 21044.006.01

Inspected By: J. Feduck/O.Chu

Temperature: 50F

Inspection Point	Inspected		Comments/Notes
Erosion Control Lined Ditch (East)	<u>Yes</u>	No	Slight depression, hard to locate. Woody vegetation growing along most of the ditch. Erosion matting exposed in some areas.
Erosion Control Lined Ditch (West)	<u>Yes</u>	No	Slight depression, hard to locate. Slightly more prominent than east side. Woody vegetation growing along most of the ditch. Erosion control matting exposed in some areas.
Gas Monitoring Vapor Point (WD-VP-01)	<u>Yes</u>	No	Recently painted yellow with blue cap. All bollards in good condition. All key locked.
Gas Monitoring Vapor Point (WD-VP-02)	<u>Yes</u>	No	Recently painted yellow with blue cap. All bollards in good condition. All key locked.
Gas Monitoring Vapor Point (WD-VP-03)	<u>Yes</u>	No	Recently painted yellow with blue cap. All bollards in good condition. All key locked.
Gas Monitoring Vapor Point (WD-VP-04)	<u>Yes</u>	No	Recently painted yellow with blue cap. All bollards in good condition. All key locked.

Appendix D. Site Photos

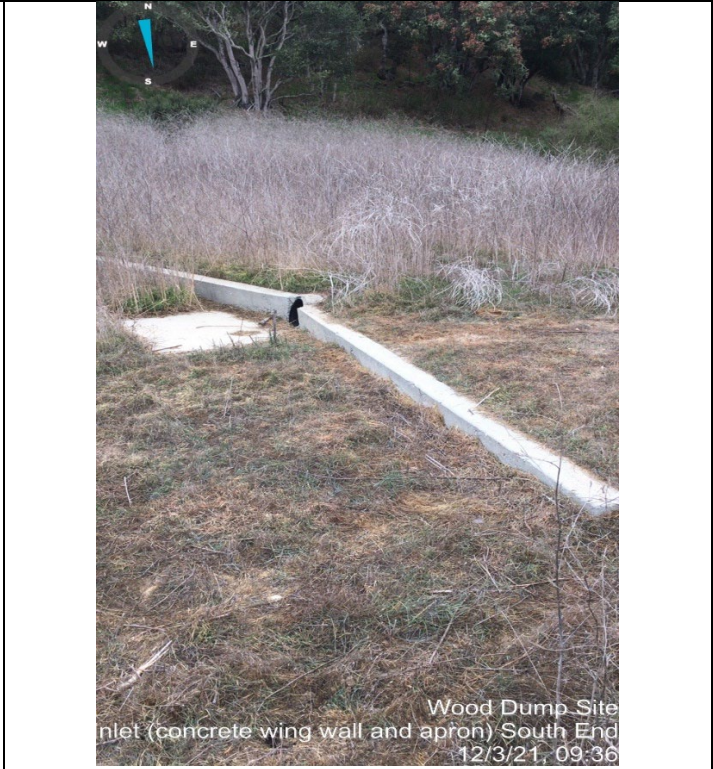
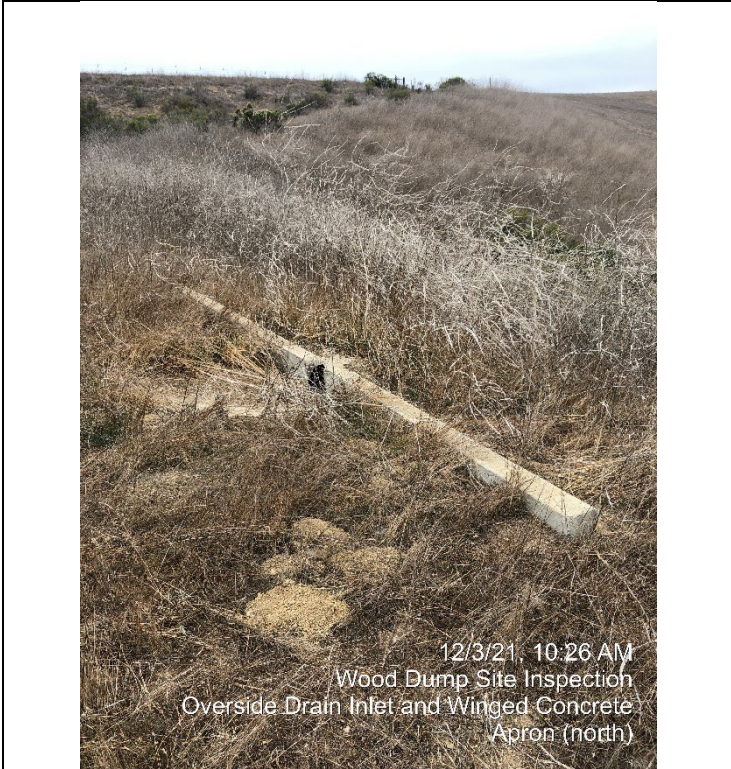


Photo 1: Oversight drain inlet and winged concrete apron (north side of Site), facing northeast.

Photo 2: Oversight drain inlet and winged concrete apron (south side of Site), facing southwest.

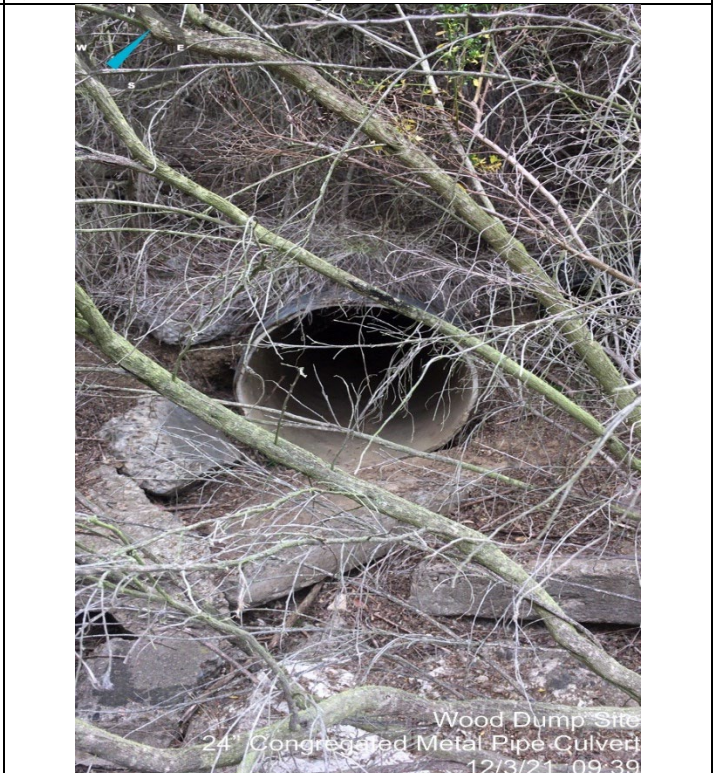


Photo 3: 24-inch corrugated outlet pipe and reinforced concrete structure (north side of Site), facing south.

Photo 4: 24-inch corrugated outlet pipe and reinforced concrete structure (south side of Site), facing northeast.



Wood Dump Site Inspection
12" HDPE (from overside drain inlet north)
12/3/21, 10:15



Wood Dump Site
12" HDPE Drain Pipe
12/3/21, 09:41

Photo 5: 12-inch HDPE drainpipe (north side of Site), facing southwest.

Photo 6: 12-inch HDPE drainpipe (south side of Site), facing northeast.



Wood Dump Site Inspection
V-Ditch North
12/3/21, 10:13



Wood Dump Site
Drain Pipe (from erosion control on west side)
12/3/21, 09:50

Photo 7: Concrete v-ditch (north side of Site), facing northwest.

Photo 8: Concrete v-ditch (south side of Site), facing east.



Wood Dump Site
Drain Pipe (from permanent erosion control ditch)
12/3/21 09:45

Photo 9: Drain inlet (western opening), facing north.



Wood Dump Site
Drain Pipe (from erosion control on west side)
12/3/21 09:51

Photo 10: Drain inlet (eastern opening), facing northeast.



Wood Dump Site

Photo 11: Erosion control lined ditch (west side of Site), facing south.



Wood Dump Site
Erosion Control Lined Ditch (East)
12/3/21 09:58

Photo 12: Erosion control lined ditch (east side of Site), facing west.

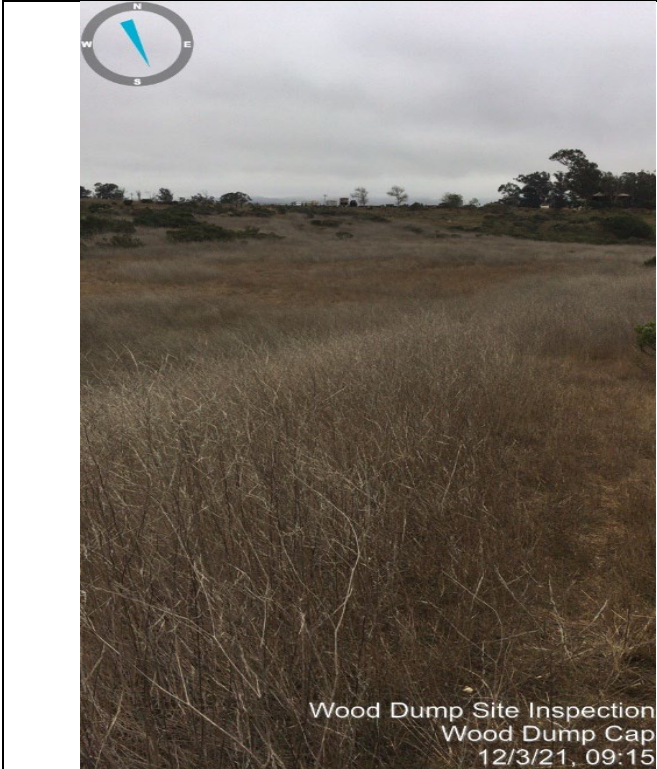


Photo 13: Wood Dump cap (deck), facing southeast.

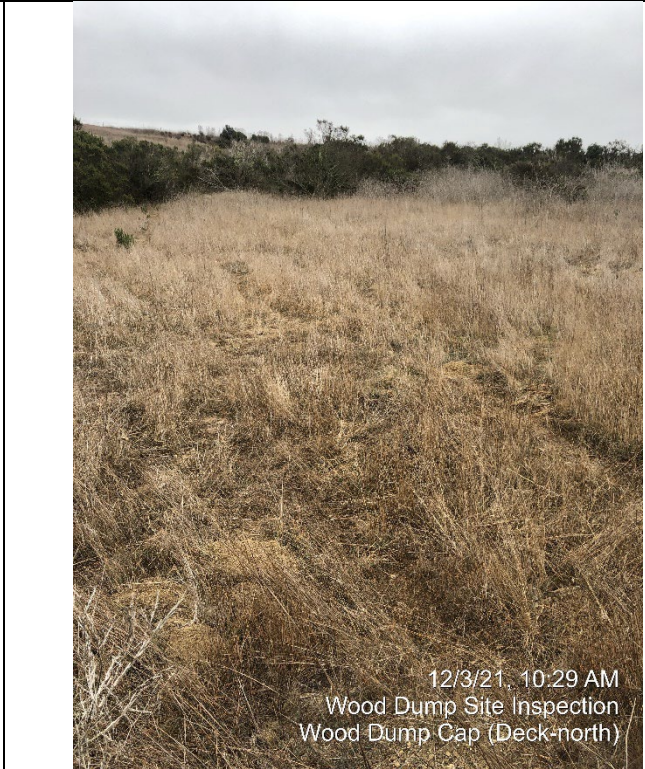


Photo 14: Wood Dump cap (deck), facing north.

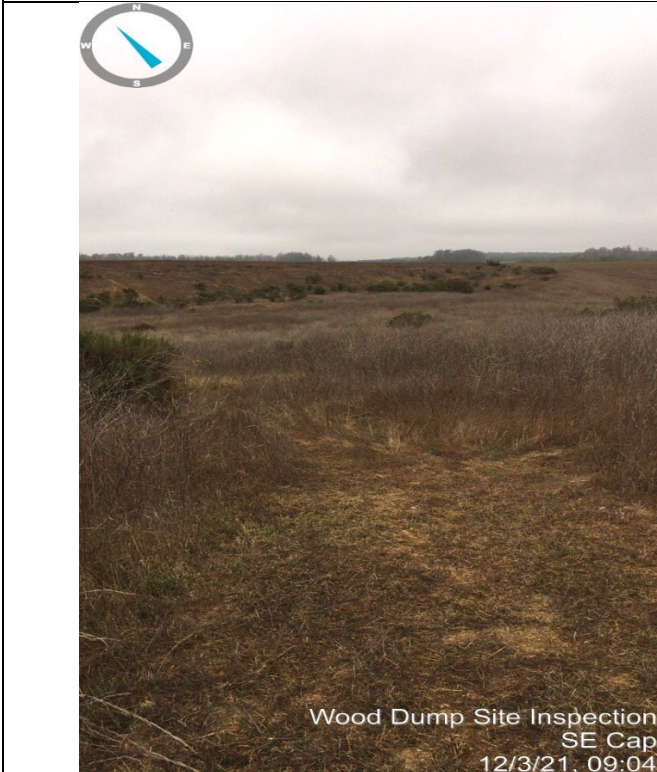


Photo 15: Wood Dump cap (deck), facing northwest.



Photo 16: Vapor probe, WD-VP-01, facing southwest.



Photo 17: Vapor probe, WD-VP-02, facing north.



Photo 18: Vapor probe, WD-VP-03, facing southwest.



Photo 19: Vapor probe, WD-VP-04, facing east.



Photo 20: Groundwater monitoring well, WD-MW-04, facing southeast.



Photo 21: Groundwater monitoring well, WD-MW-05, facing northwest.

Appendix E. Responses to Regulator Comments

Review Comments							
Project		Environmental Long-Term Monitoring, Former U.S. Disciplinary Barracks (USDB)				Contract No.	W912PL-18-D044
Document		Draft Final 2021 Annual Inspection Report, Wood Dump and Former Army Landfill				Date	June 2022
Comment Number	Commenter	Page(s)	Section	Paragraph	Comment	Response	
1	BL	PDF Pg 5	1.1	General	A bit more background (brief) on both the landfill and the wood dump would be helpful. i.e. what material was originally present, were there any COC's identified, what actions were completed, and what is remaining at each site/why they are being inspected.	Agreed. Sections 1.2 and 1.3 have been added to the text.	
2	BL	PDF Pg 6	General	General	Please provide WB staff advance notice prior to conducting the next annual inspection.	Agreed.	
3	BL	PDF Pg 7	3.1	4	Water Board staff agree with the recommendation; the drain inlet shown in photo 10 should be maintained.	Acknowledged.	
4	BL	PDF Pg 11	Figure 2	N/A	Would 'swale' more accurately describe this feature?	Clarification. While the term "swale" may be used to describe the feature, historical documentation and diagrams use the term "ditch." Therefore, the terminology has remained unchanged to avoid inconsistencies with background information.	
5	BL	PDF Pg 28	Inspection Checklist	N/A	In future inspections, please verify and document that the groundwater monitoring wells are also secure and locked.	Agreed. Future inspection checklists will include security verification of groundwater monitoring wells.	
6	BL	PDF Pg 31	Appendix D	N/A	Figure 2 says photo 7 is v-ditch south.	Agreed. Figure 2 updated accordingly.	
7	BL	PDF Pg 31	Appendix D	N/A	Figure 2 says photo 8 is v-ditch north	Agreed. Figure 2 updated accordingly.	

Comments Provided By	Name	Department/ Organization	Date	Email Address	Phone
BL	Bryan Little	CCRWQCB	May 3, 2022	Bryan.Little@waterboards.ca.gov	(805) 549-3704