

OWNER'S STATEMENT

WE THE UNDERSIGNED HEREBY STATE THAT WE ARE THE OWNERS OF OR HAVE RECORD TITLE INTEREST IN THE LAND INCLUDED WITHIN THE SUBDIVISION SHOWN ON THE ANNEXED MAP ENTITLED SUBDIVISION NUMBER "LOM-625" CONSISTING OF 12 SHEETS AND THAT WE ARE THE ONLY PERSONS WHOSE CONSENT IS NECESSARY TO PASS CLEAR TITLE TO SAID LAND. WE CONSENT TO THE MAKING AND RECORDATION OF SAID MAP AND SUBDIVISION AS SHOWN WITHIN THE DISTINCTIVE BORDERLINES.

WE ALSO HEREBY RESERVE TO OURSELVES, OUR HEIRS AND ASSIGNS, THE PRIVATE ACCESS EASEMENTS SHOWN HEREON AND THE BLANKET PRIVATE UTILITY AND DRAINAGE EASEMENT OVER ALL LOTS, EXCEPTING BUILDING LOCATIONS AND EXCLUSIVE USE COMMON AREAS, AS SHOWN HEREON.

THE REAL PROPERTY DESCRIBED BELOW IS DEDICATED AS AN EASEMENT FOR PUBLIC PURPOSES:

1. FOR THE USE AND BENEFIT OF THE SEVERAL PUBLIC UTILITY COMPANIES WHICH ARE AUTHORIZED TO SERVE IN SAID SUBDIVISION, A BLANKET PUBLIC UTILITY EASEMENT OVER ALL LOTS, EXCEPTING BUILDING LOCATIONS AND EXCLUSIVE USE COMMON AREAS, AS SHOWN HEREON
2. SETBACK EASEMENT AS SHOWN HEREON.
3. LAUREL AVENUE FOR ROAD PURPOSES AS SHOWN HEREON.
4. 12' PUBLIC PEDESTRIAN AND BICYCLE ACCESS EASEMENT AS SHOWN HEREON.

WH RIVER TERRACE 257, LLC, A DELAWARE LIMITED LIABILITY COMPANY

PATRICK HENNEBERRY, DIVISION PRESIDENT

NOTARY

A NOTARY PUBLIC OR OTHER OFFICER COMPLETING THIS CERTIFICATE VERIFIES ONLY THE IDENTITY OF THE INDIVIDUAL WHO SIGNED THE DOCUMENT TO WHICH THIS CERTIFICATE IS ATTACHED, AND NOT THE TRUTHFULNESS, ACCURACY, OR VALIDITY OF THAT DOCUMENT.

STATE OF CALIFORNIA)
COUNTY OF _____)

ON _____, 20____, BEFORE ME, _____ NOTARY PUBLIC, PERSONALLY APPEARED _____, WHO PROVED TO ME ON THE BASIS OF SATISFACTORY EVIDENCE TO BE THE PERSON(S) WHOSE NAME(S) IS/ARE SUBSCRIBED TO THE WITHIN INSTRUMENT AND ACKNOWLEDGED TO ME THAT HE/SHE/THEY EXECUTED THE SAME IN HIS/HER/THEIR AUTHORIZED CAPACITY(IES), AND THAT BY HIS/HER/THEIR SIGNATURE(S) ON THE INSTRUMENT THE PERSON(S), OR THE ENTITY UPON BEHALF OF WHICH THE PERSON(S) ACTED, EXECUTED THE INSTRUMENT.

I CERTIFY UNDER PENALTY OF PERJURY UNDER THE LAWS OF THE STATE OF CALIFORNIA THAT THE FOREGOING PARAGRAPH IS TRUE AND CORRECT.

WITNESS MY HAND.

SIGNATURE: _____ COMMISSION NO.: _____
COUNTY OF: _____

PRINTED NAME: _____ MY COMMISSION EXPIRES: _____

NOTE: DO NOT STAMP WITH NOTARY SEAL PER CALIFORNIA SUBDIVISION MAP ACT, GOVERNMENT CODE § 66436(c)

SIGNATURE OMISSIONS

THE FOLLOWING SIGNATURES HAVE BEEN OMITTED UNDER THE PROVISIONS OF THE SECTION 66436 (a)(3)(A)(i) OF THE SUBDIVISION MAP ACT AS THEIR INTEREST IS SUCH THAT IT CANNOT RIPEN INTO A FEE TITLE AND SAID SIGNATURES ARE NOT REQUIRED BY THE GOVERNING BODY:

SOUTHERN PACIFIC RAILROAD, HOLDER OF A RIGHT OF WAY EASEMENT RECORDED NOVEMBER 26, 1900 IN BOOK 73, PAGE 43 OF DEEDS.

COUNTY OF SANTA BARBARA, HOLDER OF A RIGHT OF WAY TO MAINTAIN PUBLIC UTILITES, RECORDED OCTOBER 26, 1951 AS DOCUMENT NO. 16213 IN BOOK 1025, PAGE 153 OF OFFICIAL RECORDS.

PACIFIC GAS & ELECTRIC COMPANY, HOLDER OF A PUBLIC UTILITY EASEMENT RECORDED APRIL 27, 1955 AS DOCUMENT NO. 7632 IN BOOK 1311, PAGE 586, AND PER DOCUMENT NO. 22601, RECORDED JULY 1, 1975 IN BOOK 2573, PAGE 1432, AND AN ELECTRIC EASEMENT RECORDED SEPTEMBER 5, 1963 AS DOCUMENT 38028 IN BOOK 2010, PAGE 1436, ALL OF OFFICIAL RECORDS.

LUCILLE HARMAN, HOLDER OF A ROAD AND PUBLIC UTILITY EASEMENT RECORDED OCTOBER 13, 1965 AS DOCUMENT NO. 36008 IN BOOK 2124, PAGE 342 OF OFFICIAL RECORDS.

HVOLBOLL-JOHNSON CONSTRUCTION AND DEVELOPMENT OF CALIFORNIA, INC., A CALIFORNIA CORPORATION, HOLDER OF AN EASEMENT FOR ROAD AND PUBLIC UTILITIES RECORDED DECEMBER 21, 1983 AS DOCUMENT NO. 1983-68188 OF OFFICIAL RECORDS.

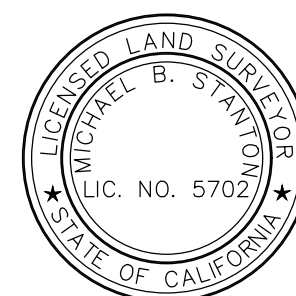
THE SIGNATURES OF THE FOLLOWING MINERAL RIGHTS HOLDERS HAVE BEEN OMITTED PURSUANT TO SECTION 66436(a)(3)(C) OF THE GOVERNMENT CODE (STATE SUBDIVISION MAP ACT).

LUCILLE HARMON, ET AL, TO GREAT LAKES CARBON CORPORATION RECORDED OCTOBER 13, 1965 AS INSTRUMENT NO. 36008, IN BOOK 2124 AT PAGE 342 OF OFFICIAL RECORDS.

SURVEYOR'S STATEMENT

THIS MAP WAS PREPARED BY ME OR UNDER MY DIRECTION AND IS BASED UPON A FIELD SURVEY IN CONFORMANCE WITH THE REQUIREMENTS OF THE SUBDIVISION MAP ACT AND LOCAL ORDINANCE AT THE REQUEST OF RICK ENGINEERING IN AUGUST, 2022. I HEREBY STATE THAT THIS FINAL MAP SUBSTANTIALLY CONFORMS TO THE APPROVED OR CONDITIONALLY APPROVED TENTATIVE MAP. I ALSO STATE THAT ALL MONUMENTS WILL BE OF THE CHARACTER AND WILL OCCUPY THE POSITIONS INDICATED WITHIN ONE YEAR OF THE COMPLETION OF IMPROVEMENTS AND WILL BE SUFFICIENT TO ENABLE THE SURVEY TO BE RETRACED.

MICHAEL B. STANTON L.S. 5702 _____
DATE



COUNTY CLERK OF THE BOARD STATEMENT

I, MICHAEL F. BROWN, CLERK OF THE BOARD OF SUPERVISORS OF SANTA BARBARA COUNTY, DO HEREBY STATE THAT PURSUANT TO GOVERNMENT CODE SECTION 66464 (STATE SUBDIVISION MAP ACT), THAT THE CERTIFICATES AND DEPOSITS REQUIRED UNDER GOVERNMENT CODE SECTION 66492 AND SECTION 66493 (STATE SUBDIVISION MAP ACT) ON THE PROPERTY WITHIN THIS SUBDIVISION HAVE BEEN FILED AND MADE.

MICHAEL F. BROWN
CLERK OF THE BOARD OF SUPERVISORS OF SANTA BARBARA COUNTY

BY: _____
DEPUTY _____ DATE _____

SOILS REPORT NOTE

A SOILS REPORT FOR SUBDIVISION NO. LOM-625 WAS PREPARED BY ME OR UNDER MY DIRECTION AND WAS FILED WITH THE CITY ON _____

DATE

COUNTY RECORDER'S STATEMENT

FILED THIS _____ DAY OF _____, 20____,

AT _____ M. IN BOOK _____ OF MAPS AT PAGE

_____ AT THE REQUEST OF MICHAEL B. STANTON.

FEE: _____

JOSEPH E. HOLLAND COUNTY CLERK-RECORDER-ASSESSOR

BY: _____
DEPUTY

RECORDER'S DISCLAIMER

THE TABULATION, LISTING AND NUMBERING OF ANY SEPARATE DOCUMENTS AUTHORIZED TO BE RECORDED CONCURRENTLY WITH THIS MAP HAVE BEEN PROVIDED BY THE SUBDIVIDER OR BY THE LOCAL AGENCY APPROVING THE MAP. THE COUNTY RECORDER MAKES NO REPRESENTATIONS REGARDING THE ACCURACY OR THE TABULATION, LISTING AND NUMBERING OF ANY SEPARATE DOCUMENTS REFERRED TO ON THIS MAP.

NOTE: THE FOLLOWING DOCUMENTS AFFECTING THE PROPERTY DENOTED HEREON ARE BEING RECORDED CONCURRENTLY HERewith:

- 1) DECLARATION OF COVENANTS, CONDITIONS AND RESTRICTIONS

PER DOC. NUMBER 20____- _____

CITY ENGINEER'S STATEMENT

I HEREBY STATE THAT I HAVE EXAMINED THIS MAP, AND THAT THE SUBDIVISION AS SHOWN IS SUBSTANTIALLY THE SAME AS IT APPEARED ON THE TENTATIVE MAP, AND ANY APPROVED ALTERATIONS THEREOF, THAT ALL PROVISIONS OF CHAPTER 2 OF THE SUBDIVISION MAP ACT AND ANY LOCAL ORDINANCES APPLICABLE AT THE TIME OF APPROVAL OF THE TENTATIVE MAP HAVE BEEN COMPLIED WITH.

CRAIG DIERLING, RCE 68746 _____
CITY ENGINEER DATE

CITY SURVEY CONSULTANT

I HEREBY STATE THAT I HAVE EXAMINED THIS MAP, AND THAT I AM SATISFIED THAT THE MAP IS TECHNICALLY CORRECT.

MARSHALL D. FARGEN _____
PLS 8962 DATE

CITY PLANNING COMMISSION STATEMENT

I HEREBY STATE THAT I HAVE EXAMINED THIS FINAL MAP AND FIND IT IN SUBSTANTIAL CONFORMANCE WITH THE TENTATIVE MAP REVIEWED BY THE CITY OF LOMPOC PLANNING COMMISSION ON SEPTEMBER 22, 2021, BY RESOLUTION NO. 953 (21), AND ALL CONDITIONS IMPOSED THEREON.

BRIAN HALVORSON _____
PLANNING MANAGER DATE
SECRETARY OF THE PLANNING COMMISSION

CITY CLERK STATEMENT

I HEREBY STATE THAT THE CITY COUNCIL OF THE CITY OF LOMPOC, BY MINUTE ACTION ON _____ APPROVED THIS FINAL MAP AND ACCEPTED, ON BEHALF OF THE PUBLIC, THE

FOLLOWING EASEMENTS:
LAUREL AVENUE FOR ROAD PURPOSES
PUBLIC PEDESTRIAN AND BICYCLE ACCESS EASEMENT
PUBLIC STORM DRAIN EASEMENTS
CITY EASEMENT FOR TREATMENT BASIN ACCESS
SETBACK EASEMENT
PUBLIC UTILITY EASEMENTS

I ALSO HEREBY STATE THAT THE CITY COUNCIL OF THE CITY OF LOMPOC DID ORDER THE ABANDONMENT OF THE RIGHT-OF-WAY EASEMENT FOR ROAD PURPOSES AS RECORDED IN BOOK 1 OF MAPS AND SURVEYS AT PAGE 82, ALONG WITH THE ROAD, SEWER AND PUBLIC UTILITY EASEMENT AS RECORDED IN BOOK 2124, PAGE 342 OF OFFICIAL RECORDS OF THE COUNTY OF SANTA BARBARA, AND THEY ARE HEREBY ABANDONED IN ACCORDANCE WITH GOVERNMENT CODE SECTION 66434g WITH THE FILING OF THIS MAP.

STACEY HADDON, CITY CLERK _____
DATE

LOM-625

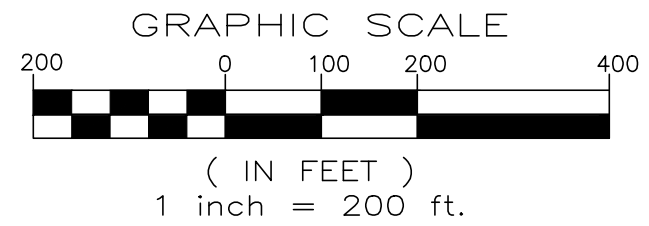
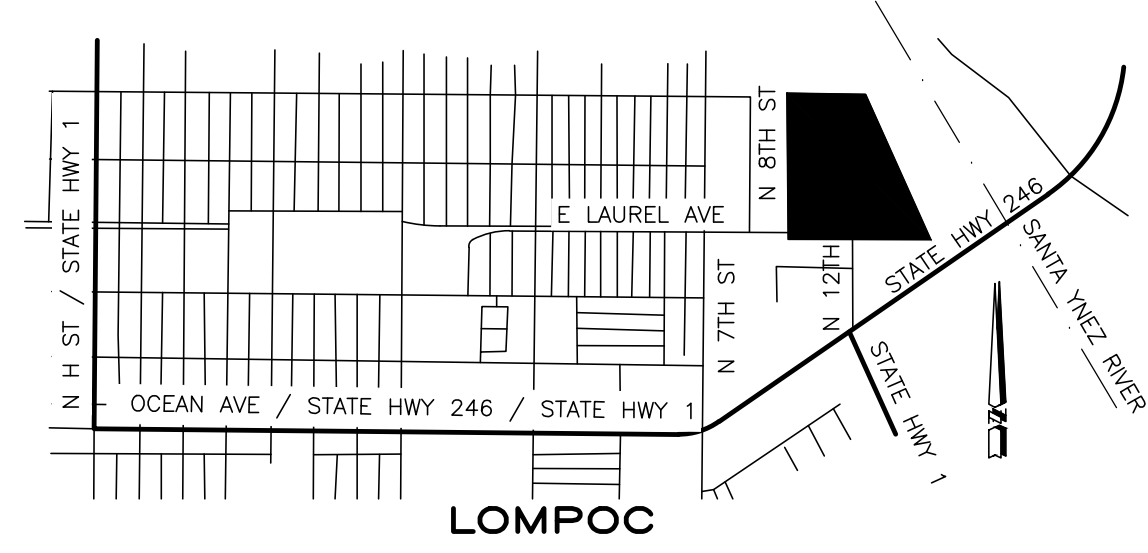
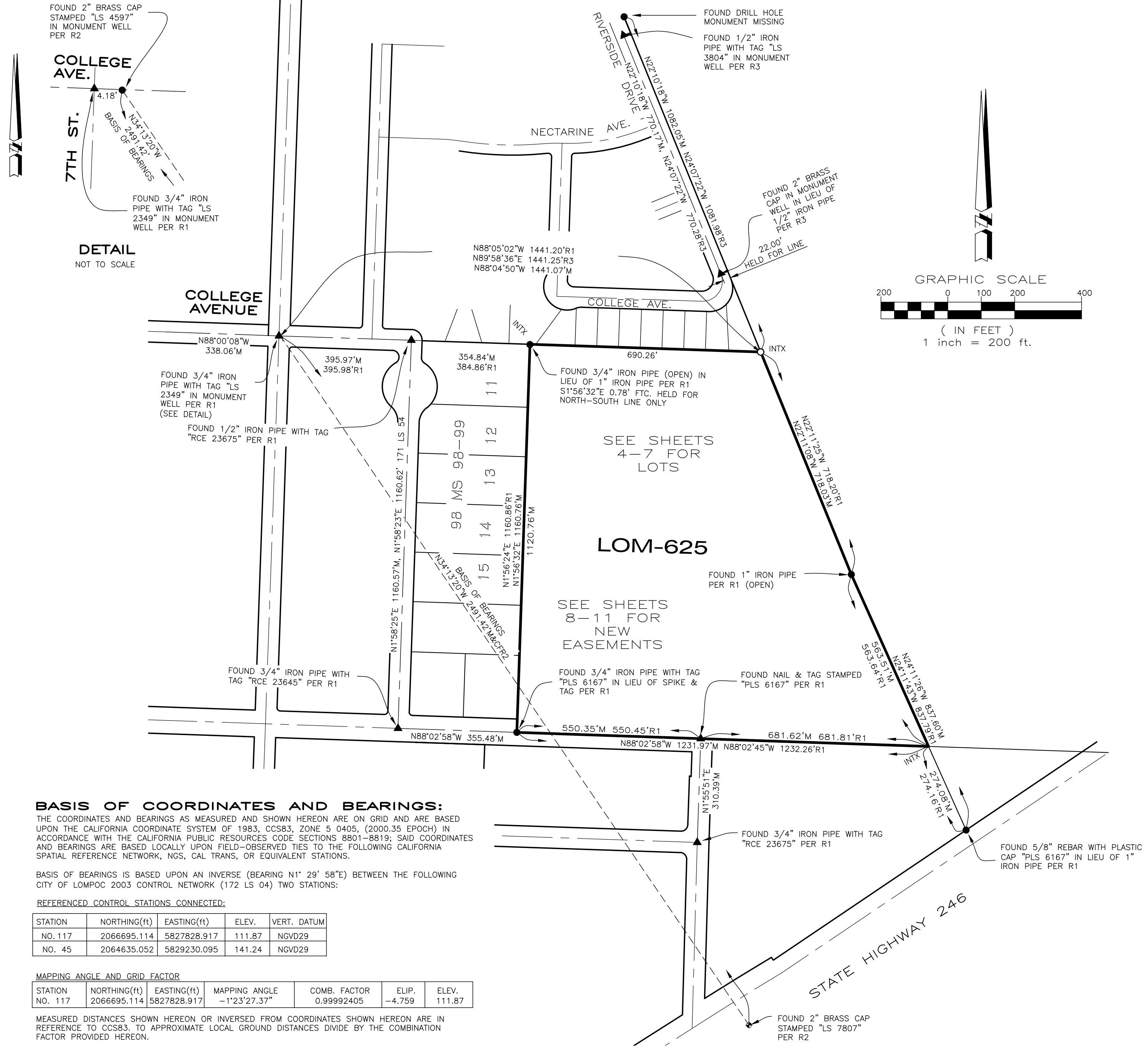
CONSISTING OF TWELVE SHEETS LYING WITHIN THE CITY OF LOMPOC

BEING A 257 CONDOMINIUM UNIT SUBDIVISION OF A PORTION OF FARM LOT 100 OF THE SUBDIVISION OF RANCHOS LOMPOC AND MISSION VIEJA, IN THE COUNTY OF SANTA BARBARA, STATE OF CALIFORNIA.



MICHAEL B. STANTON, PLS 5702
3559 SOUTH HIGUERA ST.
SAN LUIS OBISPO, CA 93401
805-594-1960

N:\2021\21-421 1701 East Laurel Ave (River Terrace) - Lompoc\C3D2013-River Terrace-LOM-625 Final Parcel Map (21-421).dwg, 18X26 map sheet 2, Dec 20, 2023 12:28pm, LRichardson



LOMPOC

VICINITY MAP
NO SCALE

LEGEND

- SET 5/8" REBAR WITH PLASTIC CAP "L.S. 5702"
- SET NAIL & TAG "L.S. 5702"
- FOUND MONUMENT AS NOTED
- ▲ FOUND WELL MONUMENT AS NOTED
- M MEASURED
- R RECORD
- FND. FOUND
- FTC FROM TRUE CORNER
- S.P. SINGLE PROPORTION
- S.N.F SEARCHED NOT FOUND
- INTX. BEARING BEARING INTERSECTION

REFERENCES

- R1 171 RS 54
- R2 172 RS 04
- R3 123 MS 78

BASIS OF COORDINATES AND BEARINGS:

THE COORDINATES AND BEARINGS AS MEASURED AND SHOWN HEREON ARE ON GRID AND ARE BASED UPON THE CALIFORNIA COORDINATE SYSTEM OF 1983, CCS83, ZONE 5 0405, (2000.35 EPOCH) IN ACCORDANCE WITH THE CALIFORNIA PUBLIC RESOURCES CODE SECTIONS 8801-8819; SAID COORDINATES AND BEARINGS ARE BASED LOCALLY UPON FIELD-OBSERVED TIES TO THE FOLLOWING CALIFORNIA SPATIAL REFERENCE NETWORK, NGS, CAL TRANS, OR EQUIVALENT STATIONS.

BASIS OF BEARINGS IS BASED UPON AN INVERSE (BEARING N1° 29' 58"E) BETWEEN THE FOLLOWING CITY OF LOMPOC 2003 CONTROL NETWORK (172 LS 04) TWO STATIONS:

REFERENCED CONTROL STATIONS CONNECTED:

STATION	NORTHING(ft)	EASTING(ft)	ELEV.	VERT. DATUM
NO. 117	2066695.114	5827828.917	111.87	NGVD29
NO. 45	2064635.052	5829230.095	141.24	NGVD29

MAPPING ANGLE AND GRID FACTOR

STATION	NORTHING(ft)	EASTING(ft)	MAPPING ANGLE	COMB. FACTOR	ELIP.	ELEV.
NO. 117	2066695.114	5827828.917	-1°23'27.37"	0.99992405	-4.759	111.87

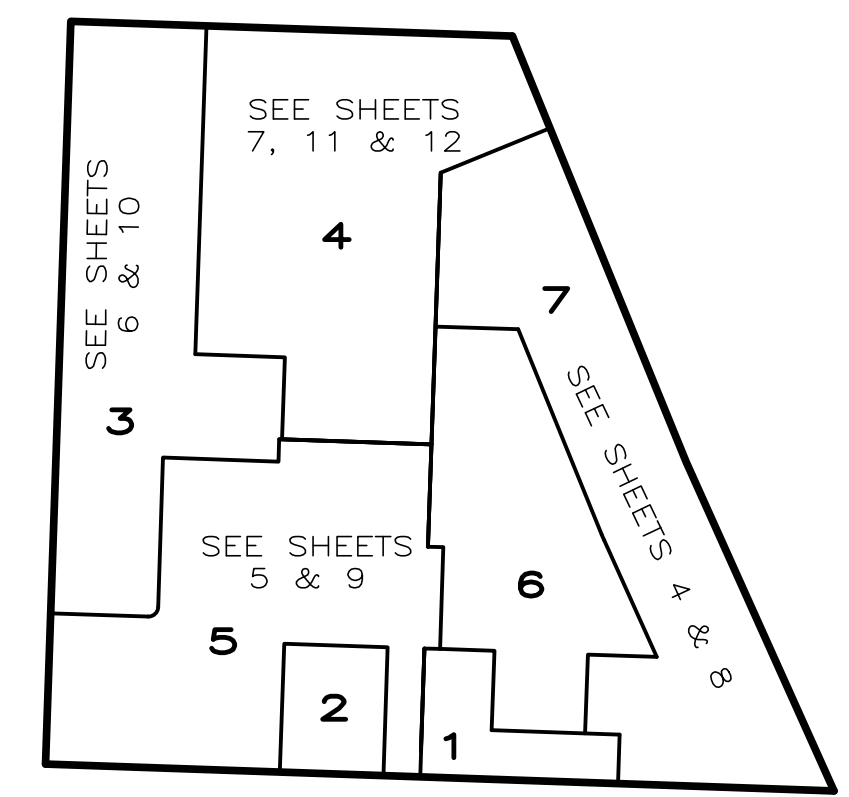
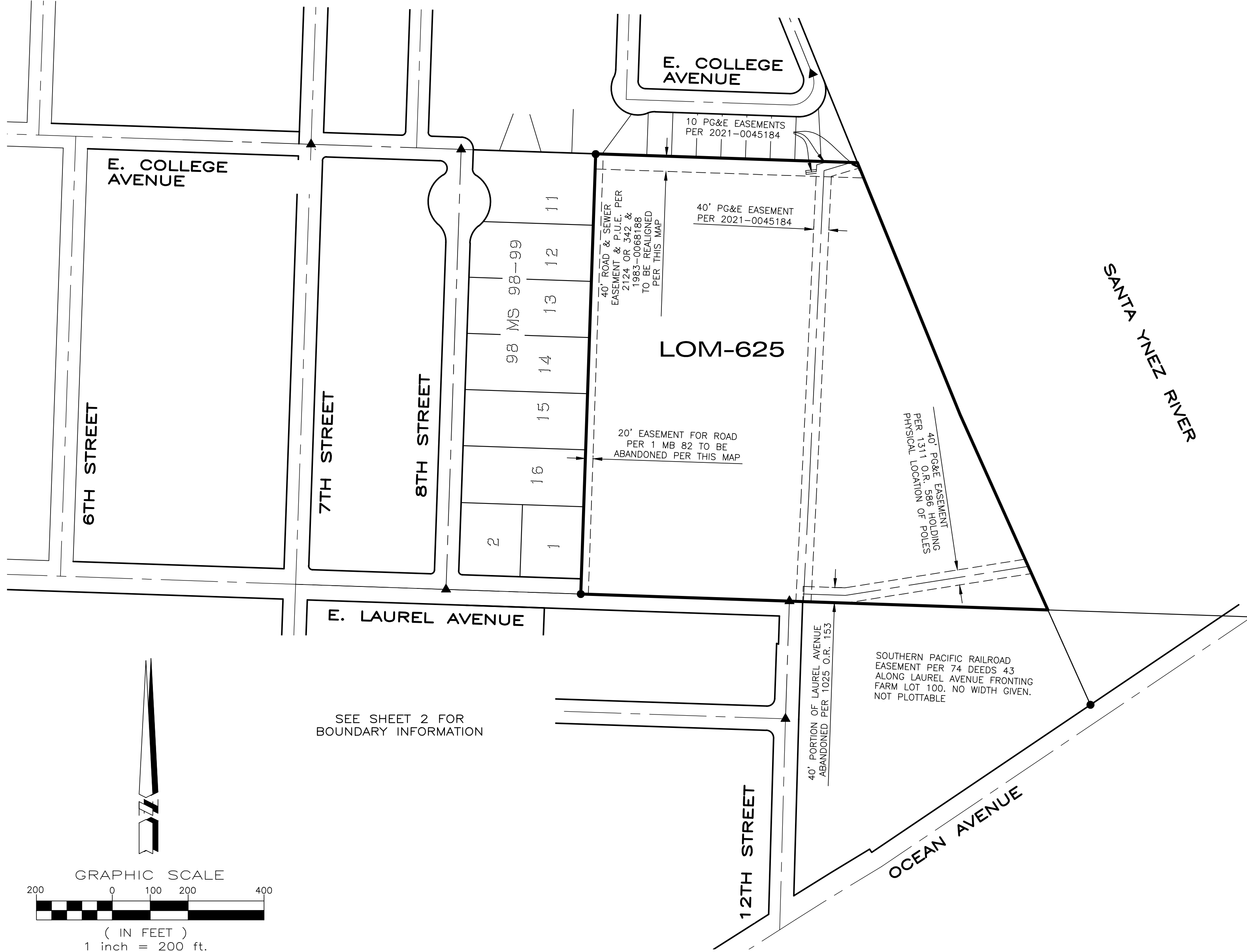
MEASURED DISTANCES SHOWN HEREON OR INVERSED FROM COORDINATES SHOWN HEREON ARE IN REFERENCE TO CCS83. TO APPROXIMATE LOCAL GROUND DISTANCES DIVIDE BY THE COMBINATION FACTOR PROVIDED HEREON.

BOUNDARY LOM-625

BEING A 257 CONDOMINIUM UNIT SUBDIVISION OF A PORTION OF FARM LOT 100 OF THE SUBDIVISION OF RANCHOS LOMPOC AND MISSION VIEJA, IN THE COUNTY OF SANTA BARBARA, STATE OF CALIFORNIA.

MBS LAND SURVEYS
MICHAEL B. STANTON, PLS 5702
3559 SOUTH HIGUERA ST.
SAN LUIS OBISPO, CA 93401
805-594-1960

N:\2021\21-421 1701 East Laurel Ave (River Terrace) - Lompoc\C3D\C3D2013-River Terrace-LOM-625 Final Parcel Map (21-421).dwg, 18X26 map sheet 3, Dec 20, 2023 12:28pm, LRichardson



SHEET INDEX
SCALE: 1" = 300'

LEGEND

- SET 5/8" REBAR WITH PLASTIC CAP "L.S. 5702"
- SET NAIL & TAG "L.S. 5702"
- FOUND MONUMENT AS NOTED
- ▲ FOUND WELL MONUMENT AS NOTED
- M MEASURED
- R_ RECORD
- FND. FOUND
- S.P. SINGLE PROPORTION
- S.N.F. SEARCHED NOT FOUND
- INTX. BEARING BEARING INTERSECTION

REFERENCES

- R1 171 RS 54
- R2 172 RS 04
- R3 123 MS 78

**EXISTING EASEMENTS
LOM-625**

BEING A 257 CONDOMINIUM UNIT SUBDIVISION OF A PORTION OF FARM LOT 100 OF THE SUBDIVISION OF RANCHOS LOMPOC AND MISSION VIEJA, IN THE COUNTY OF SANTA BARBARA, STATE OF CALIFORNIA.

MBS LAND SURVEYS
MICHAEL B. STANTON, PLS 5702
3559 SOUTH HIGUERA ST.
SAN LUIS OBISPO, CA 93401
805-594-1960

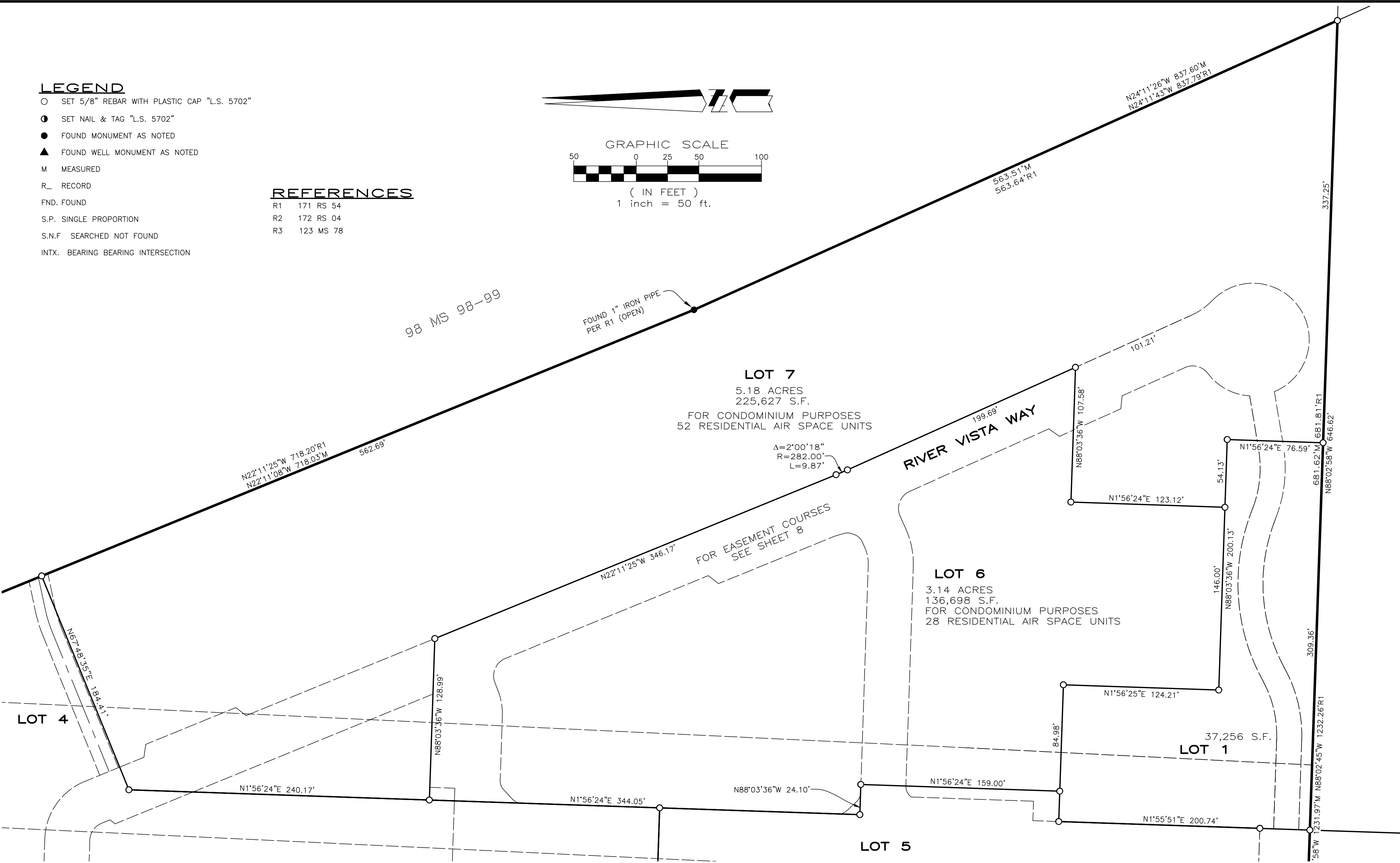
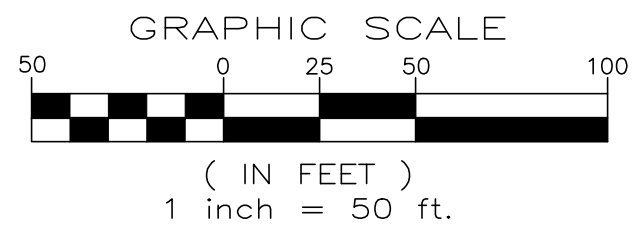
N:\2021\21-421 1701 East Laurel Ave (River Terrace) - Lompoc\C3D\C3D2013-River Terrace-LOM-625 Final Parcel Map (21-421).dwg, 18X26 SHEET 4, Dec 20, 2023 12:27pm, LRichardson

LEGEND

- SET 5/8" REBAR WITH PLASTIC CAP "L.S. 5702"
- SET NAIL & TAG "L.S. 5702"
- FOUND MONUMENT AS NOTED
- ▲ FOUND WELL MONUMENT AS NOTED
- M MEASURED
- R RECORD
- FND. FOUND
- S.P. SINGLE PROPORTION
- S.N.F. SEARCHED NOT FOUND
- INTX. BEARING BEARING INTERSECTION

REFERENCES

- R1 171 RS 54
- R2 172 RS 04
- R3 123 MS 78



SEE SHEET 5

EASEMENT NOTE:
SEE SHEET 8 FOR NEW EASEMENTS

LOTS LOM-625

BEING A 257 CONDOMINIUM UNIT SUBDIVISION OF A PORTION OF FARM LOT 100 OF THE SUBDIVISION OF RANCHOS LOMPOC AND MISSION VIEJA, IN THE COUNTY OF SANTA BARBARA, STATE OF CALIFORNIA.

MBS LAND SURVEYS
 MICHAEL B. STANTON, PLS 5702
 3559 SOUTH HIGUERA ST.
 SAN LUIS OBISPO, CA 93401
 805-594-1960

SEE SHEET 4

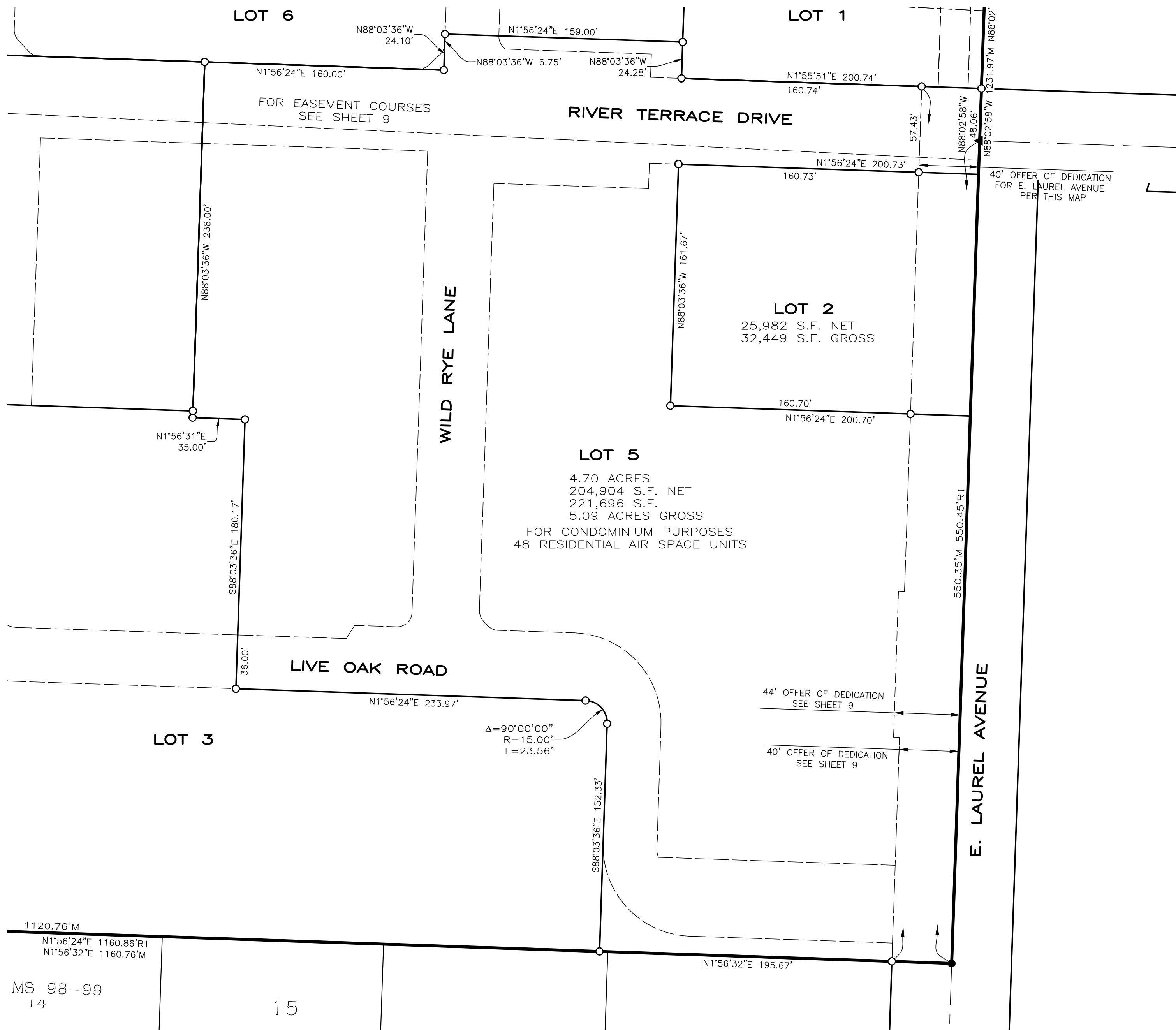
LEGEND

- SET 5/8" REBAR WITH PLASTIC CAP "L.S. 5702"
- SET NAIL & TAG "L.S. 5702"
- FOUND MONUMENT AS NOTED
- ▲ FOUND WELL MONUMENT AS NOTED
- M MEASURED
- R_ RECORD
- FND. FOUND
- S.P. SINGLE PROPORTION
- S.N.F SEARCHED NOT FOUND
- INTX. BEARING BEARING INTERSECTION

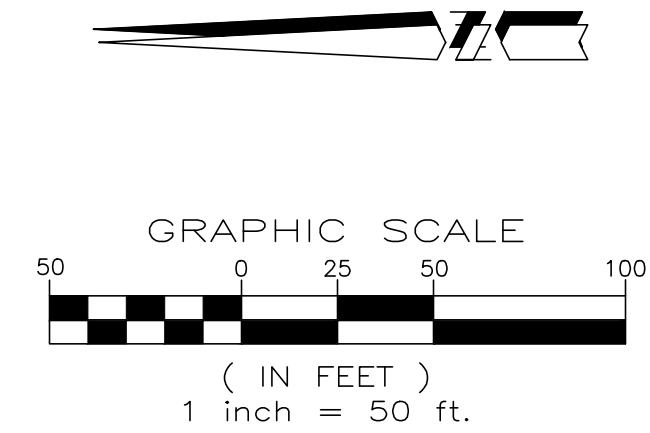
REFERENCES

- R1 171 RS 54
- R2 172 RS 04
- R3 123 MS 78

SEE SHEET 6



EASEMENT NOTE:
SEE SHEETS 9 FOR NEW EASEMENTS



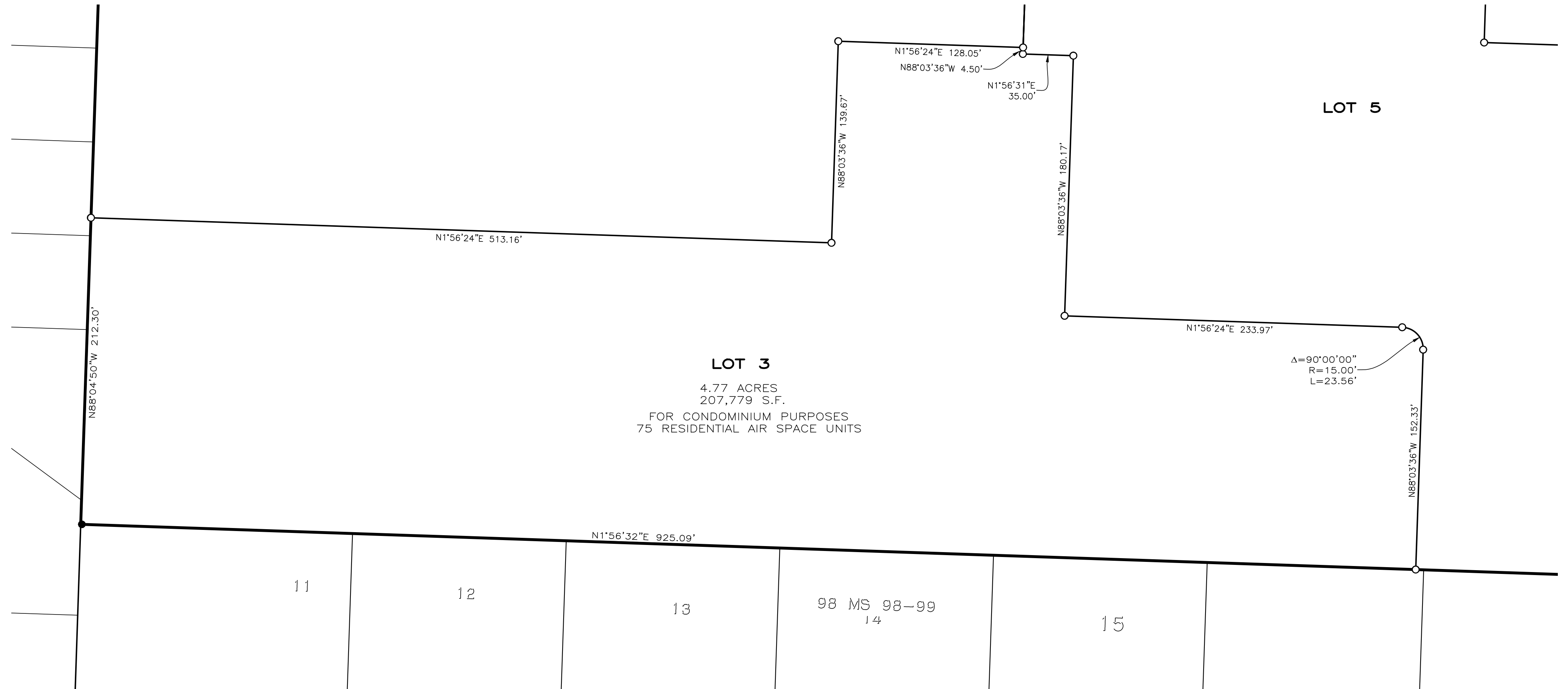
LOTS LOM-625

BEING A 257 CONDOMINIUM UNIT SUBDIVISION OF A PORTION OF FARM LOT 100 OF THE SUBDIVISION OF RANCHOS LOMPOC AND MISSION VIEJA, IN THE COUNTY OF SANTA BARBARA, STATE OF CALIFORNIA.

MBS LAND SURVEYS
MICHAEL B. STANTON, PLS 5702
3559 SOUTH HIGUERA ST.
SAN LUIS OBISPO, CA 93401
805-594-1960

SEE SHEET 7

SEE SHEET 4



LOT 3
 4.77 ACRES
 207,779 S.F.
 FOR CONDOMINIUM PURPOSES
 75 RESIDENTIAL AIR SPACE UNITS

LOT 5

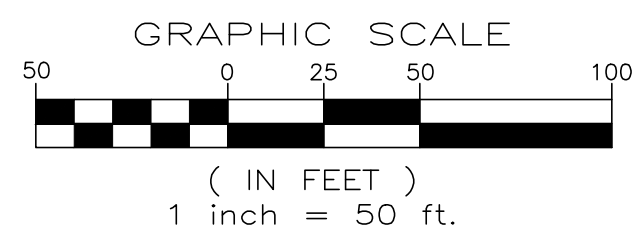
EASEMENT NOTE:
 SEE SHEETS 10-11 FOR NEW EASEMENTS

LEGEND

- SET 5/8" REBAR WITH PLASTIC CAP "L.S. 5702"
- SET NAIL & TAG "L.S. 5702"
- FOUND MONUMENT AS NOTED
- ▲ FOUND WELL MONUMENT AS NOTED
- M MEASURED
- R_ RECORD
- FND. FOUND
- S.P. SINGLE PROPORTION
- S.N.F. SEARCHED NOT FOUND
- INTX. BEARING BEARING INTERSECTION

REFERENCES

- R1 171 RS 54
- R2 172 RS 04
- R3 123 MS 78



LOTS LOM-625

BEING A 257 CONDOMINIUM UNIT SUBDIVISION OF A PORTION OF FARM LOT 100 OF THE SUBDIVISION OF RANCHOS LOMPOC AND MISSION VIEJA, IN THE COUNTY OF SANTA BARBARA, STATE OF CALIFORNIA.

MBS LAND SURVEYS
 MICHAEL B. STANTON, PLS 5702
 3559 SOUTH HIGUERA ST.
 SAN LUIS OBISPO, CA 93401
 805-594-1960

N:\2021\21-421 1701 East Laurel Ave (River Terrace) - Lompoc\C3D\C3D2013-River Terrace-LOM-625 Final Parcel Map (21-421).dwg, 18X26 sheet 7, Dec 20, 2023 12:27pm, LRichardson

SANTA YNEZ RIVER

SEE SHEET 4

LOT 7

LOT 6

LOT 4

5.67 ACRES
247,117 S.F.
FOR CONDOMINIUM PURPOSES
54 RESIDENTIAL AIR SPACE UNITS

LOT 5

SEE SHEET 5

LOT 3

SEE SHEET 6

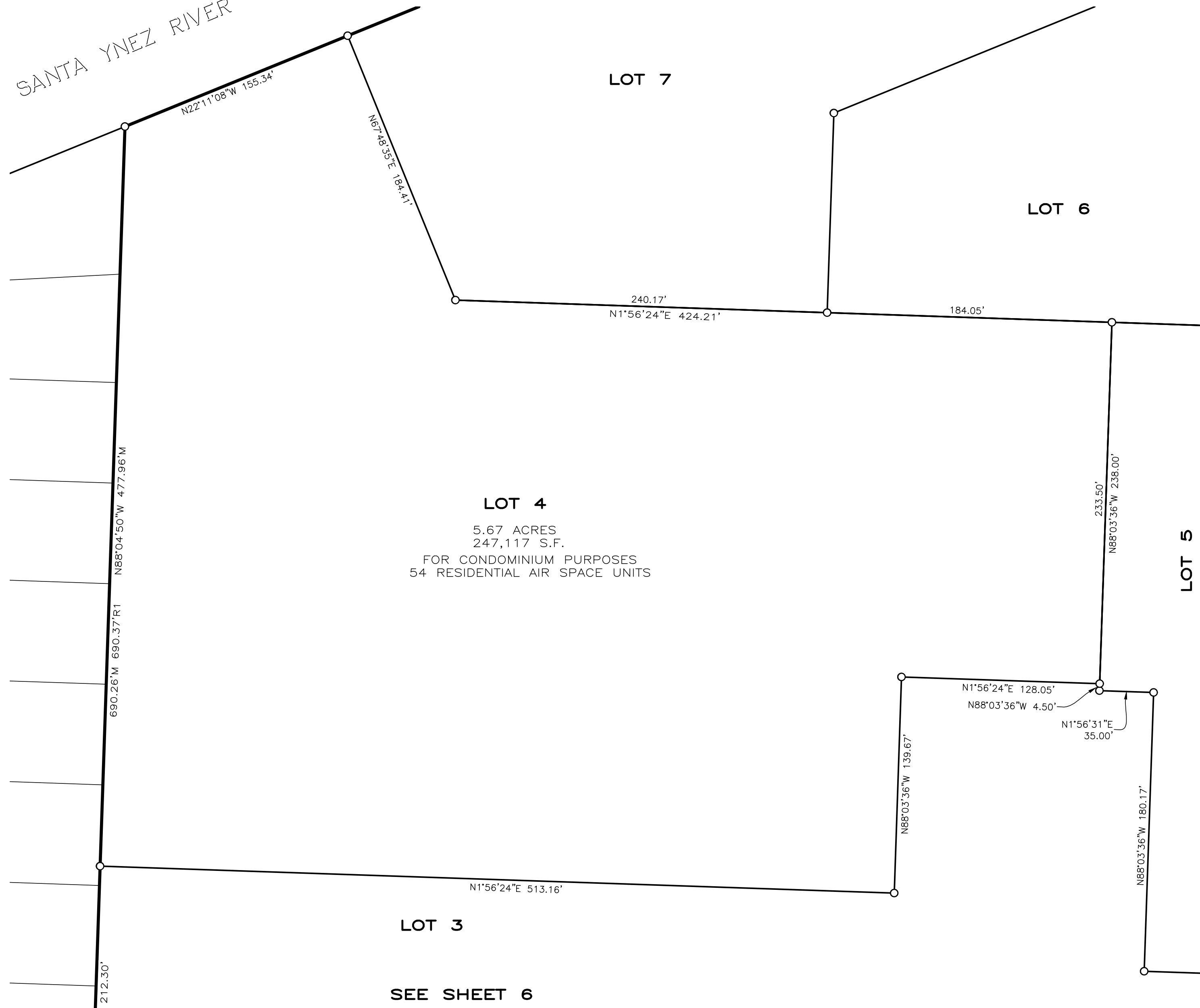
LEGEND

- SET 5/8" REBAR WITH PLASTIC CAP "L.S. 5702"
- SET NAIL & TAG "L.S. 5702"
- FOUND MONUMENT AS NOTED
- ▲ FOUND WELL MONUMENT AS NOTED
- M MEASURED
- R RECORD
- FND. FOUND
- S.P. SINGLE PROPORTION
- S.N.F. SEARCHED NOT FOUND
- INTX. BEARING BEARING INTERSECTION

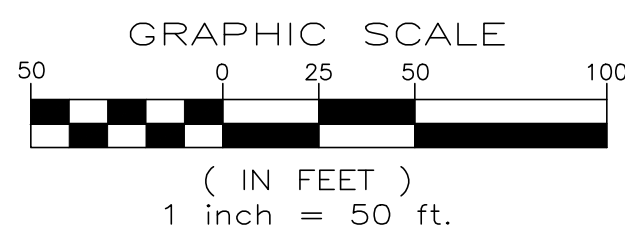
REFERENCES

- R1 171 RS 54
- R2 172 RS 04
- R3 123 MS 78

123 MS 77-78



EASEMENT NOTE:
SEE SHEET 11 FOR NEW EASEMENTS



LOTS LOM-625

BEING A 257 CONDOMINIUM UNIT SUBDIVISION OF A PORTION OF FARM LOT 100 OF THE SUBDIVISION OF RANCHOS LOMPOC AND MISSION VIEJA, IN THE COUNTY OF SANTA BARBARA, STATE OF CALIFORNIA.

MBS LAND SURVEYS
 MICHAEL B. STANTON, PLS 5702
 3559 SOUTH HIGUERA ST.
 SAN LUIS OBISPO, CA 93401
 805-594-1960

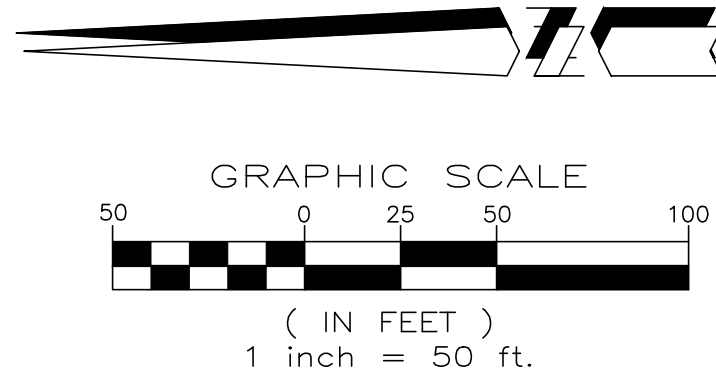
N:\2021\21-421 1701 East Laurel Ave (River Terrace) - Lompoc\C3D\2013-River Terrace-LOM-625 Final Parcel Map (21-421).dwg, 18X26 SHEET 8, Dec 20, 2023 12:27pm, LRichardson

LEGEND

- SET 5/8" REBAR WITH PLASTIC CAP "L.S. 5702"
- SET NAIL & TAG "L.S. 5702"
- FOUND MONUMENT AS NOTED
- ▲ FOUND WELL MONUMENT AS NOTED
- M MEASURED
- R RECORD
- FND. FOUND
- S.P. SINGLE PROPORTION
- S.N.F. SEARCHED NOT FOUND
- INTX. BEARING BEARING INTERSECTION

REFERENCES

- R1 171 RS 54
- R2 172 RS 04
- R3 123 MS 78



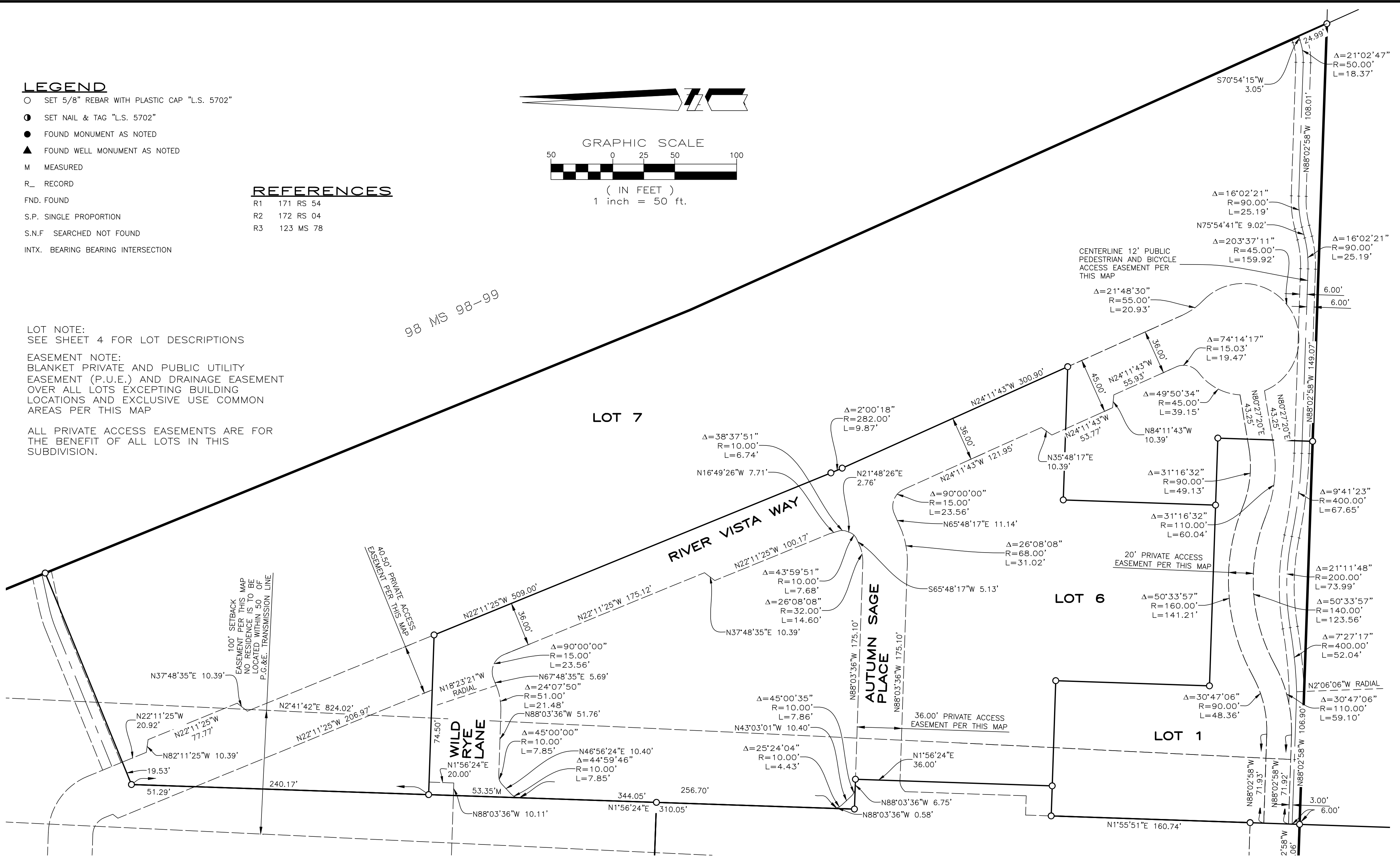
LOT NOTE:
SEE SHEET 4 FOR LOT DESCRIPTIONS

EASEMENT NOTE:
BLANKET PRIVATE AND PUBLIC UTILITY
EASEMENT (P.U.E.) AND DRAINAGE EASEMENT
OVER ALL LOTS EXCEPTING BUILDING
LOCATIONS AND EXCLUSIVE USE COMMON
AREAS PER THIS MAP

ALL PRIVATE ACCESS EASEMENTS ARE FOR
THE BENEFIT OF ALL LOTS IN THIS
SUBDIVISION.

SEE SHEET 11

SEE SHEET 9



**NEW EASEMENTS
LOM-625**

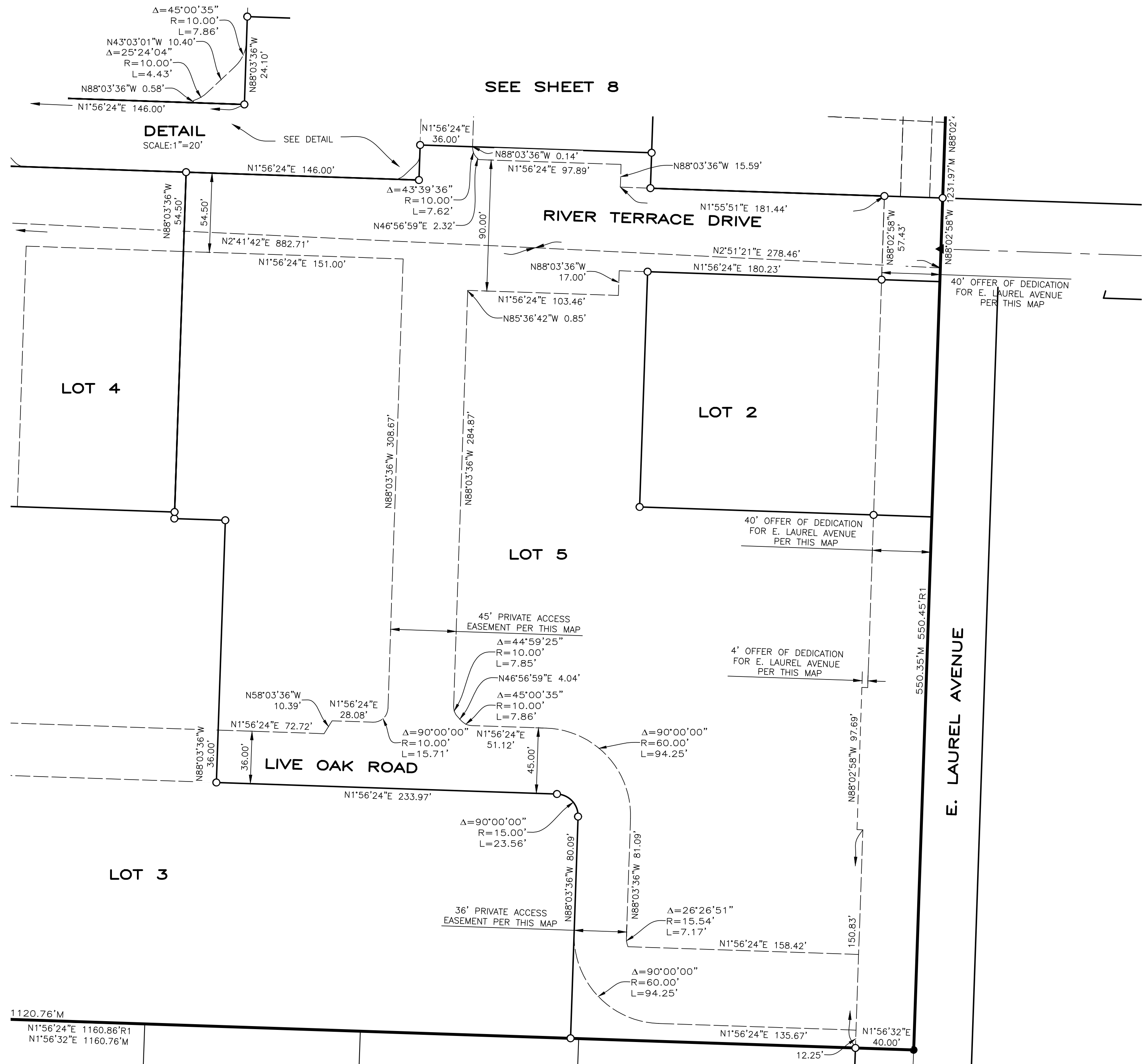
BEING A 257 CONDOMINIUM UNIT SUBDIVISION OF A PORTION OF
FARM LOT 100 OF THE SUBDIVISION OF RANCHOS LOMPOC AND
MISSION VIEJA, IN THE COUNTY OF SANTA BARBARA, STATE OF
CALIFORNIA.

MBS LAND SURVEYS
MICHAEL B. STANTON, PLS 5702
3559 SOUTH HIGUERA ST.
SAN LUIS OBISPO, CA 93401
805-594-1960

N:\2021\21-421 1701 East Laurel Ave (River Terrace) - Lompoc\C3D\C3D2013-River Terrace-LOM-625 Final Parcel Map (21-421).dwg, 18X26 SHEET 9, Dec 20, 2023 12:25pm, LRichardson

SEE SHEET 11

SEE SHEET 10



LEGEND

- SET 5/8" REBAR WITH PLASTIC CAP "L.S. 5702"
- SET NAIL & TAG "L.S. 5702"
- FOUND MONUMENT AS NOTED
- ▲ FOUND WELL MONUMENT AS NOTED
- M MEASURED
- R_ RECORD
- FND. FOUND
- S.P. SINGLE PROPORTION
- S.N.F SEARCHED NOT FOUND
- INTX. BEARING BEARING INTERSECTION

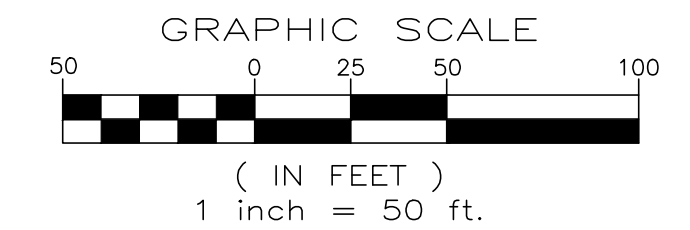
REFERENCES

- R1 171 RS 54
- R2 172 RS 04
- R3 123 MS 78

LOT NOTE:
SEE SHEET 5 FOR LOT DESCRIPTIONS

EASEMENT NOTE:
BLANKET PRIVATE AND PUBLIC UTILITY EASEMENT (P.U.E.) AND DRAINAGE EASEMENT OVER ALL LOTS EXCEPTING BUILDING LOCATIONS AND EXCLUSIVE USE COMMON AREAS PER THIS MAP

ALL PRIVATE ACCESS EASEMENTS ARE FOR THE BENEFIT OF ALL LOTS IN THIS SUBDIVISION.



**NEW EASEMENTS
LOM-625**

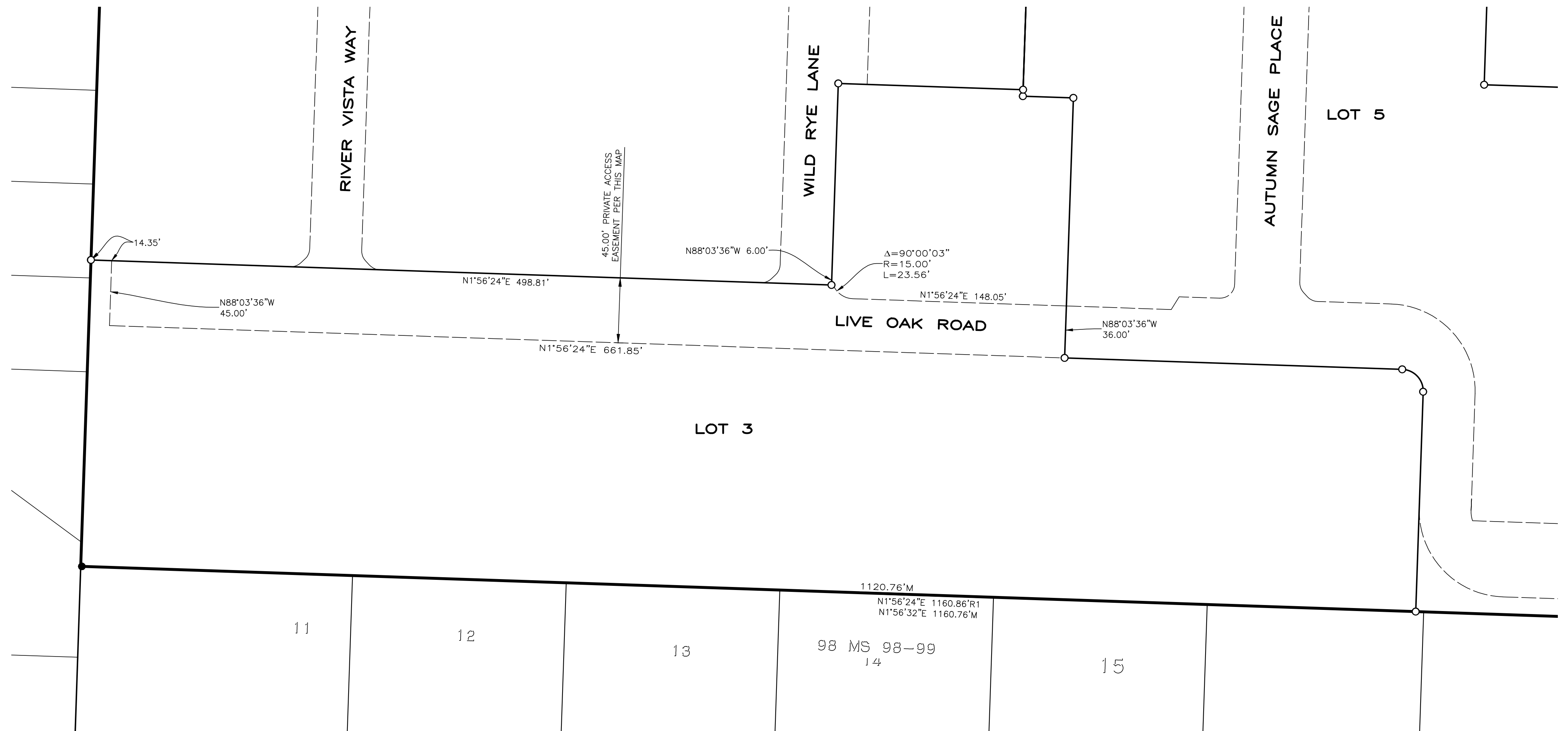
BEING A 257 CONDOMINIUM UNIT SUBDIVISION OF A PORTION OF FARM LOT 100 OF THE SUBDIVISION OF RANCHOS LOMPOC AND MISSION VIEJA, IN THE COUNTY OF SANTA BARBARA, STATE OF CALIFORNIA.

MBS LAND SURVEYS
MICHAEL B. STANTON, PLS 5702
3559 SOUTH HIGUERA ST.
SAN LUIS OBISPO, CA 93401
805-594-1960

N:\2021\21-421 1701 East Laurel Ave (River Terrace) - Lompoc\C3D\C3D2013-River Terrace-LOM-625 Final Parcel Map (21-421).dwg, 18X26 sheet 10, Dec 20, 2023 12:25pm, LRichardson

SEE SHEET 11

SEE SHEET 9

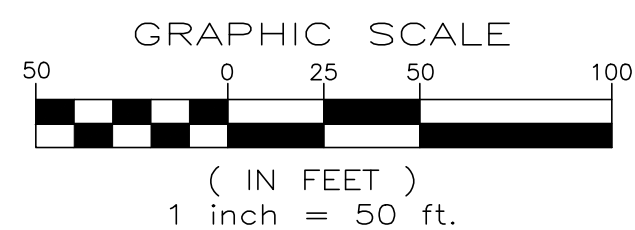
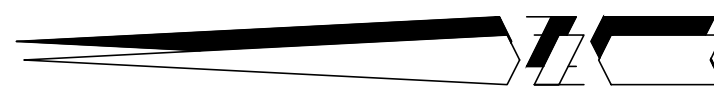


LEGEND

- SET 5/8" REBAR WITH PLASTIC CAP "L.S. 5702"
- SET NAIL & TAG "L.S. 5702"
- FOUND MONUMENT AS NOTED
- ▲ FOUND WELL MONUMENT AS NOTED
- M MEASURED
- R_ RECORD
- FND. FOUND
- S.P. SINGLE PROPORTION
- S.N.F. SEARCHED NOT FOUND
- INTX. BEARING BEARING INTERSECTION

REFERENCES

- R1 171 RS 54
- R2 172 RS 04
- R3 123 MS 78



LOT NOTE:
SEE SHEET 6 FOR LOT DESCRIPTIONS

EASEMENT NOTE:
BLANKET PRIVATE AND PUBLIC UTILITY
EASEMENT (P.U.E.) AND DRAINAGE EASEMENT
OVER ALL LOTS EXCEPTING BUILDING
LOCATIONS AND EXCLUSIVE USE COMMON
AREAS PER THIS MAP

ALL PRIVATE ACCESS EASEMENTS ARE FOR
THE BENEFIT OF ALL LOTS IN THIS
SUBDIVISION.

**NEW EASEMENTS
LOM-625**

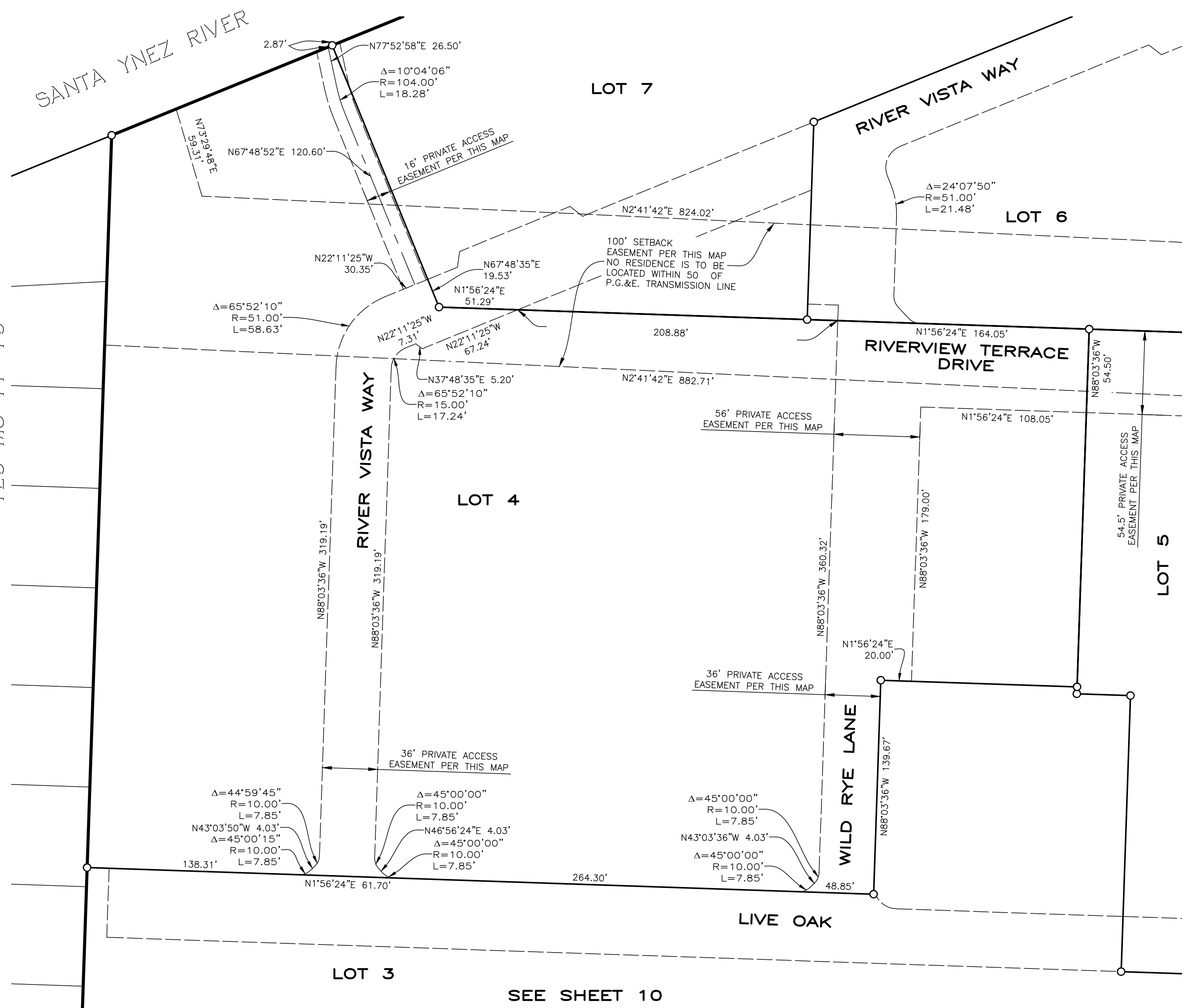
BEING A 257 CONDOMINIUM UNIT SUBDIVISION OF A PORTION OF
FARM LOT 100 OF THE SUBDIVISION OF RANCHOS LOMPOC AND
MISSION VIEJA, IN THE COUNTY OF SANTA BARBARA, STATE OF
CALIFORNIA.



MICHAEL B. STANTON, PLS 5702
3559 SOUTH HIGUERA ST.
SAN LUIS OBISPO, CA 93401
805-594-1960

N:\2021\21-421 1701 East Laurel Ave (River Terrace) - Lompoc\C3D\C3D2013-River Terrace-LOM-625 Final Parcel Map (21-421).dwg, 18X26 sheet 11, Dec 20, 2023 12:25pm, LRichardson

123 MS 77-78



LEGEND

- SET 5/8" REBAR WITH PLASTIC CAP "L.S. 5702"
- SET NAIL & TAG "L.S. 5702"
- FOUND MONUMENT AS NOTED
- ▲ FOUND WELL MONUMENT AS NOTED
- M MEASURED
- R RECORD
- FND. FOUND
- S.P. SINGLE PROPORTION
- S.N.F. SEARCHED NOT FOUND
- INTX. BEARING BEARING INTERSECTION

REFERENCES

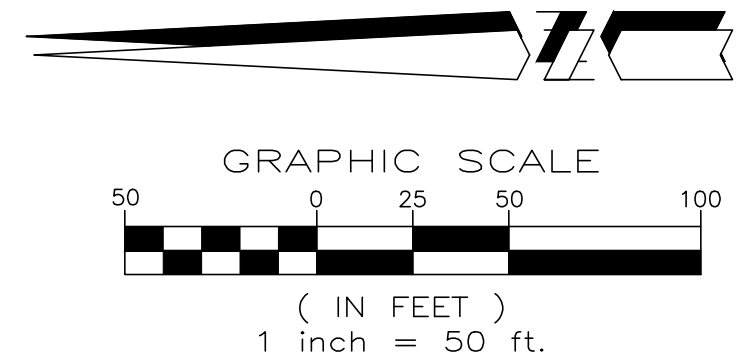
- R1 171 RS 54
- R2 172 RS 04
- R3 123 MS 78

SEE SHEET 9

LOT NOTE:
SEE SHEET 5 FOR LOT DESCRIPTIONS

EASEMENT NOTE:
BLANKET PRIVATE AND PUBLIC UTILITY
EASEMENT (P.U.E.) AND DRAINAGE EASEMENT
OVER ALL LOTS EXCEPTING BUILDING
LOCATIONS AND EXCLUSIVE USE COMMON
AREAS PER THIS MAP

ALL PRIVATE ACCESS EASEMENTS ARE FOR
THE BENEFIT OF ALL LOTS IN THIS
SUBDIVISION.



SEE SHEET 10

**NEW EASEMENTS
LOM-625**

BEING A 257 CONDOMINIUM UNIT SUBDIVISION OF A PORTION OF
FARM LOT 100 OF THE SUBDIVISION OF RANCHOS LOMPOC AND
MISSION VIEJA, IN THE COUNTY OF SANTA BARBARA, STATE OF
CALIFORNIA.

MBS LAND SURVEYS
MICHAEL B. STANTON, PLS 5702
3559 SOUTH HIGUERA ST.
SAN LUIS OBISPO, CA 93401
805-594-1960

ADDITIONAL INFORMATION SHEET:

THE ADDITIONAL INFORMATION ON THIS SHEET IS FOR INFORMATIONAL PURPOSES, DESCRIBING CONDITIONS AS OF THE DATE OF FILING, AND IS NOT INTENDED TO AFFECT RECORD TITLE INTEREST.

62. IN ADDITION TO THE 50-FOOT BUFFER BETWEEN THE CLOSEST RESIDENCE AND THE PROPOSED LOCATION OF THE TRANSMISSION LINE, FOIL COVERED INSULATION AND REFLECTIVE WINDOWS SHOULD BE USED ON ALL RESIDENCES WITHIN 100 FEET OF THE TRANSMISSION LINE.
(H&HM 7.0-7)

N:\2021\21-421 1701 East Laurel Ave (River Terrace) - Lompoc\C3D\C3D2013-River Terrace-LOM-625 Final Parcel Map (21-421).dwg, 18X26 sheet 12, Dec 20, 2023 12:24pm, LRichardson

LOM-625

BEING A 257 CONDOMINIUM UNIT SUBDIVISION OF A PORTION OF FARM LOT 100 OF THE SUBDIVISION OF RANCHOS LOMPOC AND MISSION VIEJA, IN THE COUNTY OF SANTA BARBARA, STATE OF CALIFORNIA.



MICHAEL B. STANTON, PLS 5702
3559 SOUTH HIGUERA ST.
SAN LUIS OBISPO, CA 93401
805-594-1960