



City of Lompoc

— Local Roadway Safety Plan



December 19, 2023
City Council Meeting

Contents

- ① Background
- ② Countermeasures
Intersection
Segment/Systemic



→ **Background**

Local Road Safety Plan (LRSP)

A LRSP is a requirement for future HSIP Cycles and qualifies as a safety action plan for SS4A grants. This process is similar to a Systemic Safety Analysis Report (SSAR) except a LRSP has stakeholder engagement that represents the 5 E's of Traffic Safety (not just engineering). This holistic approach allows certain areas of concern not showing a crash pattern to be analyzed. This working group is very important in creating a comprehensive safety plan that is tailored to address the local needs and issues. Also, fosters local, state, and agency partnerships to advance local road safety.



Local Road Safety Plan | Process



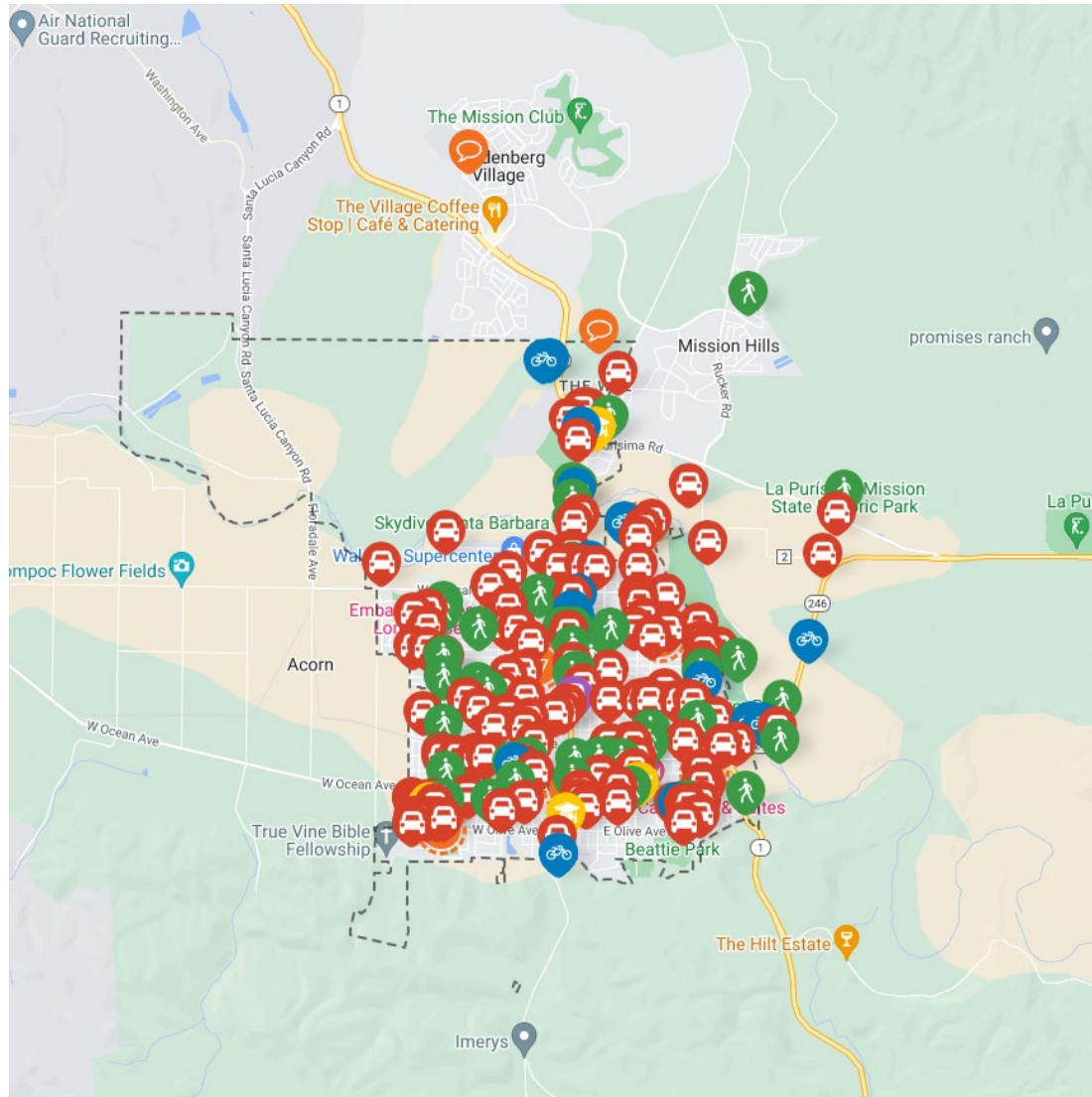
Lompoc LRSP Working Group

The Stakeholder Working Group consisted of representatives from the following groups:

- City of Lompoc
- Santa Barbara County:
- Santa Barbara County Association of Governments (SBCAG)
- Lompoc Police Department
- Lompoc Fire Department
- Caltrans District 5
- Lompoc Unified School District
- Lompoc Valley Community Health Care Association
- GHD



Public Outreach | Project Website & Old Town Market



270

Comments

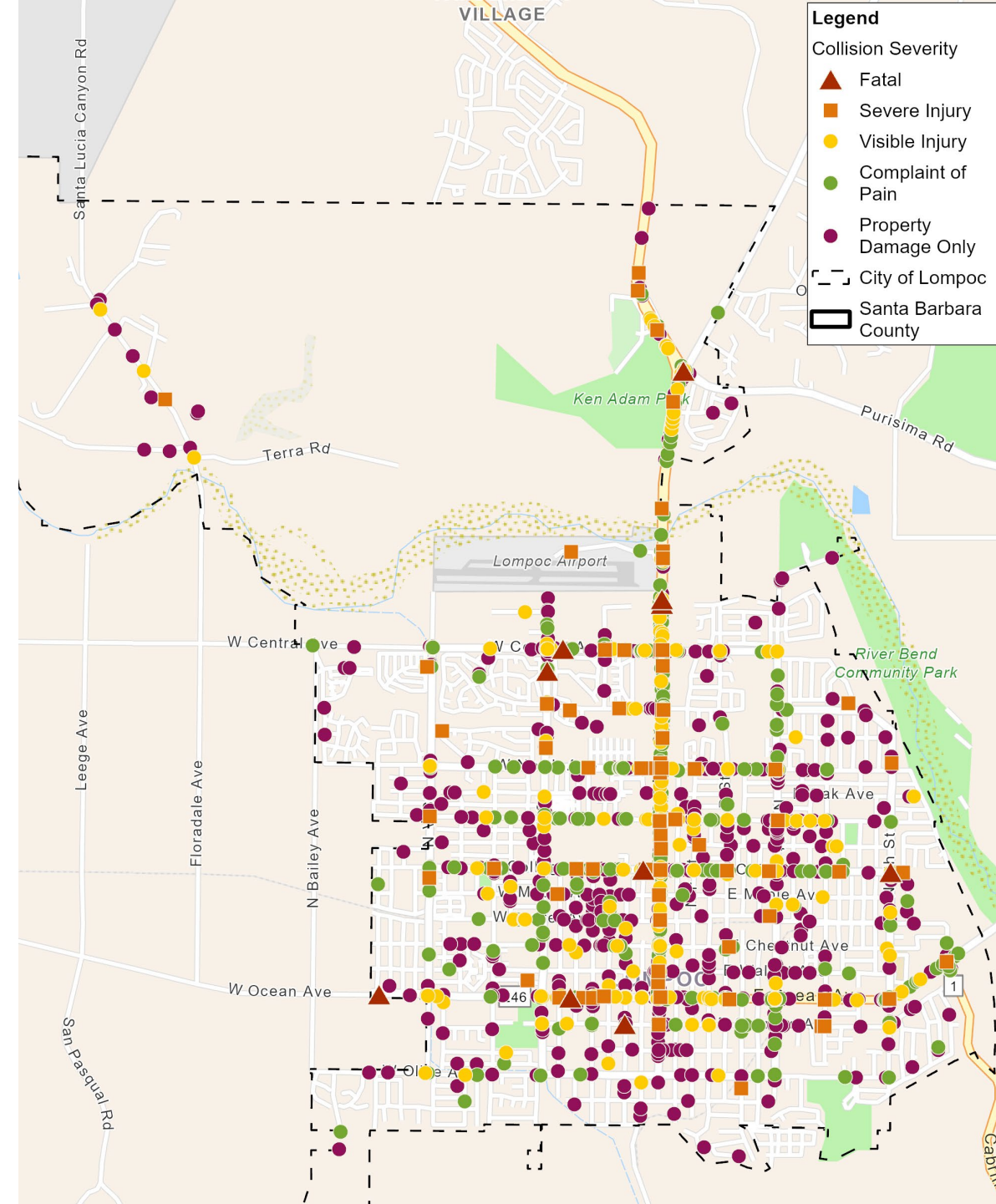
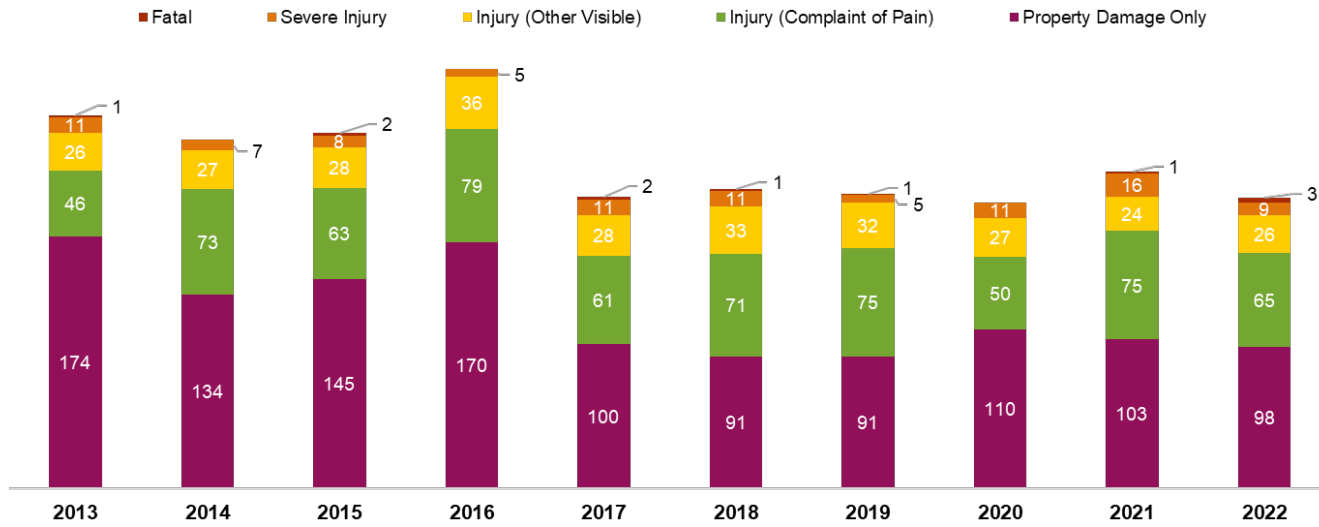
106

Survey Responses

- Closed for comment on October 11
- Interactive map comments used to help develop countermeasures
- Overall successful outreach

Collisions | Severity

from 2013 to 2022



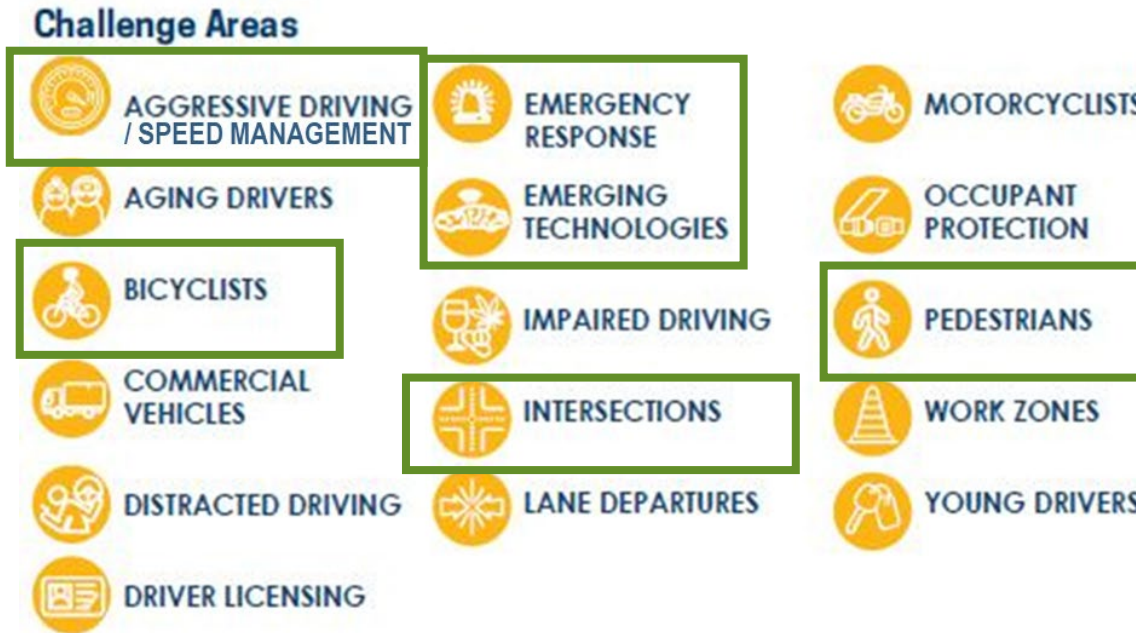
Identified Priority Locations

Location	Facility Type	Top by Relative Severity	Top by Total Collisions	Top by Bike/Ped Collisions	Notes
Top Intersections					
N St & W Ocean Ave	SR 246	Yes			Previously Mitigated with RRFB
N H St & Central Ave	SR 1	Yes	Yes	Yes	Intersection Project
N H St & Barton Ave	SR 1	Yes	Yes		Intersection Project
N H St & North Ave	SR 1	Yes		Yes	Systemic Intersection Project
L St & W North Ave	City	Yes			Previously Mitigated with RRFB
A St & E North Ave	City			Yes	Intersection Project
I St & W College Ave	City			Yes	Funded Project Planned
A St & E Pine Ave	City			Yes	Monitor for Future Projects
N H St & Pine Ave	SR 1		Yes		Systemic Intersection Project
Cabrillo Hwy & E Ocean Ave	SR 246 / SR 1		Yes		Monitor for Future Projects
N H St & College Ave	SR 1		Yes		Systemic Intersection Project
Top Segments					
SR 1 from N of Hancock Dr to Ocean Ave	SR 1	Yes	Yes	Yes	Segment Project
Central Ave from Bailey Ave to H St	City	Yes	Yes		Segment Project
O St from N of Aviation Dr to Ocean Ave	City	Yes	Yes	Yes	Segment Project
North Ave from Z St to H St	City	Yes		Yes	Segment Project
V St from N of Central Ave to Ocean Ave	City	Yes			Segment Project
College Ave from H St to 8th St	City				Segment Project
Pine Ave from H St to A St	City			Yes	Segment Project
SR 246 from V St to Cabrillo Hwy	SR 246		Yes		Monitor for Future Projects
Central Ave from H St to A St	City				Monitor for Future Projects
Laurel Ave from V St to H St	City			Yes	Monitor for Future Projects
A St from Canfield Ave to Chesnut Ave	City		Yes		Monitor for Future Projects

Countermeasures

Challenge Areas | Identified

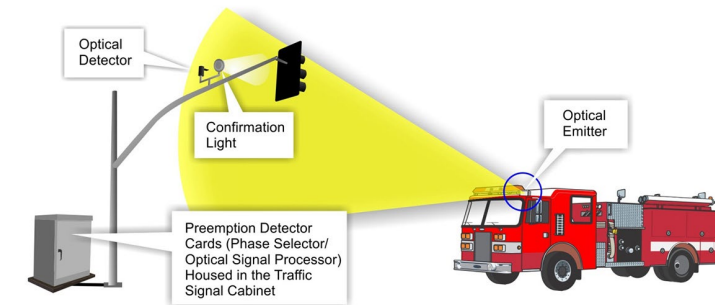
The LRSP should compliment California's Strategic Highway Safety Plan (SHSP) which is a **data driven** plan that identifies goals, objectives, and strategies to reduce fatalities and serious injuries on all public roads.



These challenge areas were used in countermeasure development.

Intersection Countermeasures

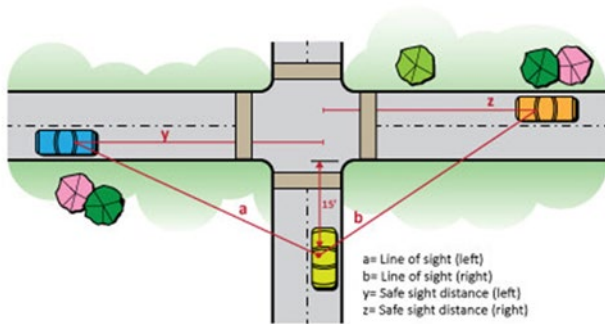
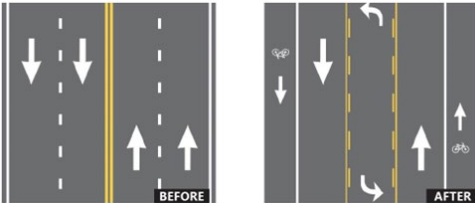
- Improve Lighting
- Evaluate street configuration and striping
 - Bike lanes, lane markings, crosswalks, etc.
- Evaluate and upgrade signals and hardware
 - Leading Pedestrian Intervals, red and yellow timing, retroreflective borders
- Install Emergency Vehicle Preemption Systems
- Curb bulbouts



Segment/Systemic Countermeasures



- Install Dynamic/Variable Speed Feedback Signs
- Evaluate Road Diet
- Evaluate and Improve sight distance at Intersections
- Install or upgrade Pedestrian Crossings and Bicycle Lane/Facilities
- Install or upgrade striping
- Evaluate Corridor Lighting
- Install Raised Median



Systemic Countermeasures | Non-Engineering Strategies



Education



Enforcement



**Emerging
Technologies**



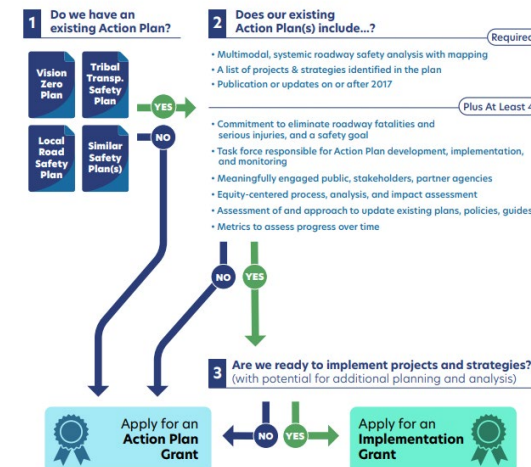
**Emergency
Response**

LRSP Benefits

- Grant Eligibility (LRSP required)
 - Highway Safety Improvement Program (HSIP) Funding
 - Safe Streets and Roads for All (SS4A) Funding
- Increased competitiveness for all traffic safety grants
- Collaboration/Improved coordination with Caltrans, SB County, and SBCAG
 - Aid with implementation of local safety improvements on H St, Ocean Ave, and adjoining county roads

SS4A Safe Streets and Roads for All Application Decision Flow Chart

This flowchart is not meant to replace the NOFO. Applicants should follow the instructions in the NOFO to correctly apply for a grant. See the SS4A website for more information: <https://www.transportation.gov/SS4A>





*** Thank You**

→ ghd.com