

Annual Water Shortage Assessment & Proposed Ordinance No. 1697(22)

STEVEN VALLE

UTILITY CONSERVATION COORDINATOR

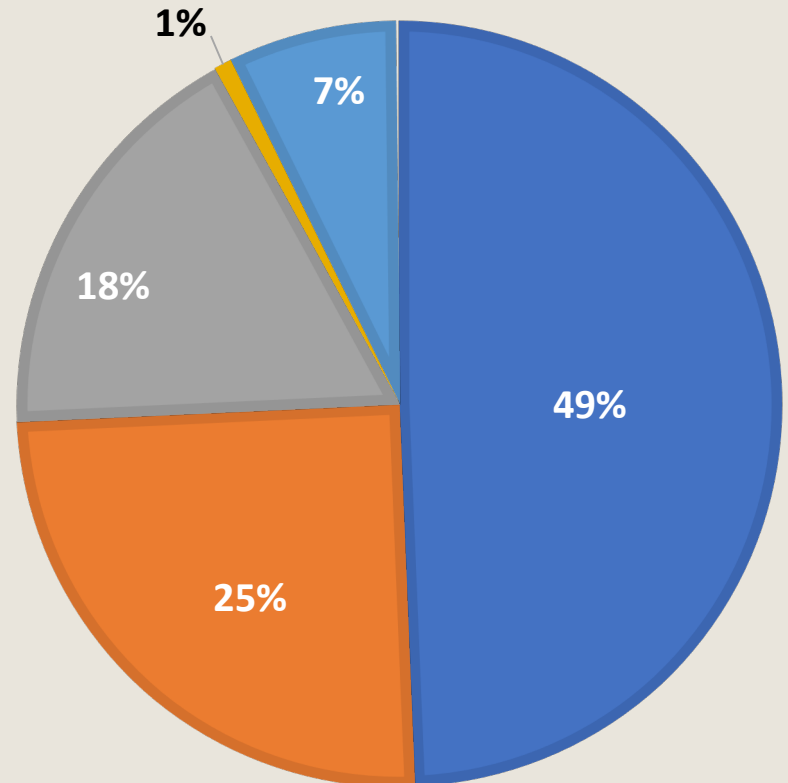
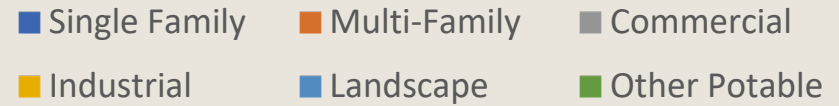
CITY OF LOMPOC

Executive Order N-7-22 & Emergency Regulation 2022-0606-03(E)

- Submit Preliminary Annual Water Supply and Demand Assessment
 - Water shortage action data along with predicted supply & demand through June 2023
 - ✓ Draft submitted to DWR on June 1, 2022
 - ✓ Final submitted to DWR on July 1, 2022
- Adopt Level 2 (20% reduction) measures by June 10, 2022
 - ✓ City of Lompoc is already implementing locally-appropriate Level 1 and 2 actions resulting in a 22% demand reduction
- Bans the irrigation of non-functional turf with potable water in commercial, industrial and institutional sectors in CA

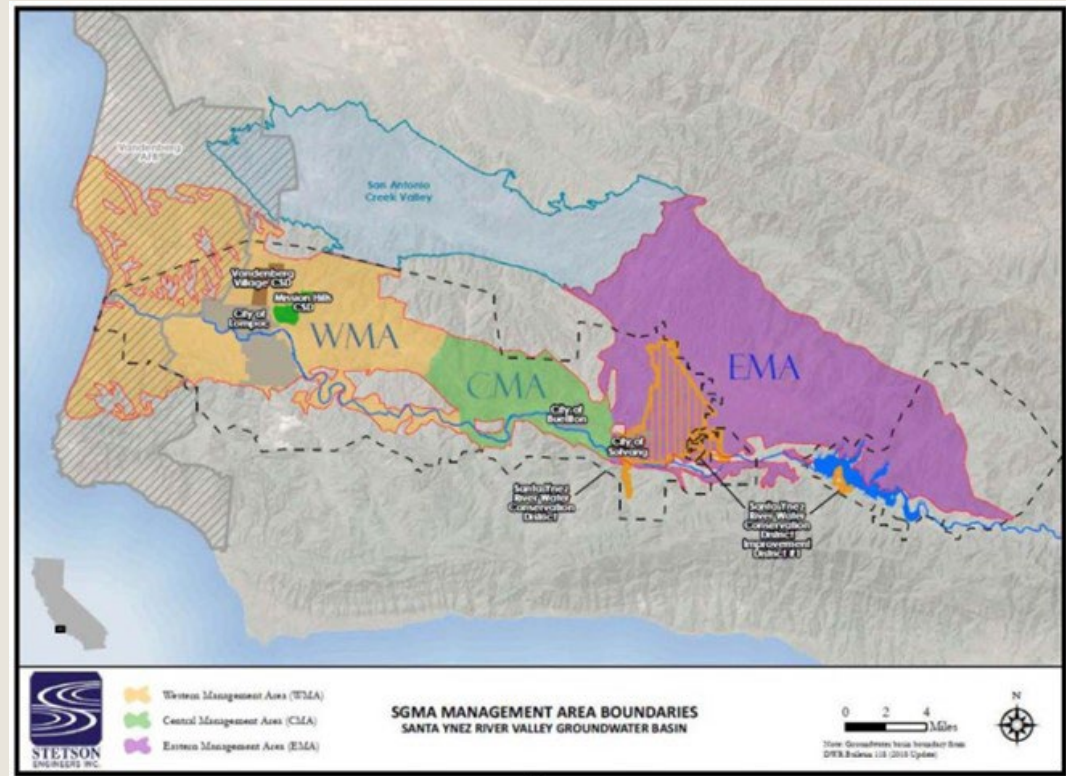
Lompoc Water Demand

- Estimated FY 2022-2023 Water Demand: **4,171 AF**
 - 2020-2021: 4,368 AF
 - 2021-2022: 4,171 AF



Lompoc Water Supplies

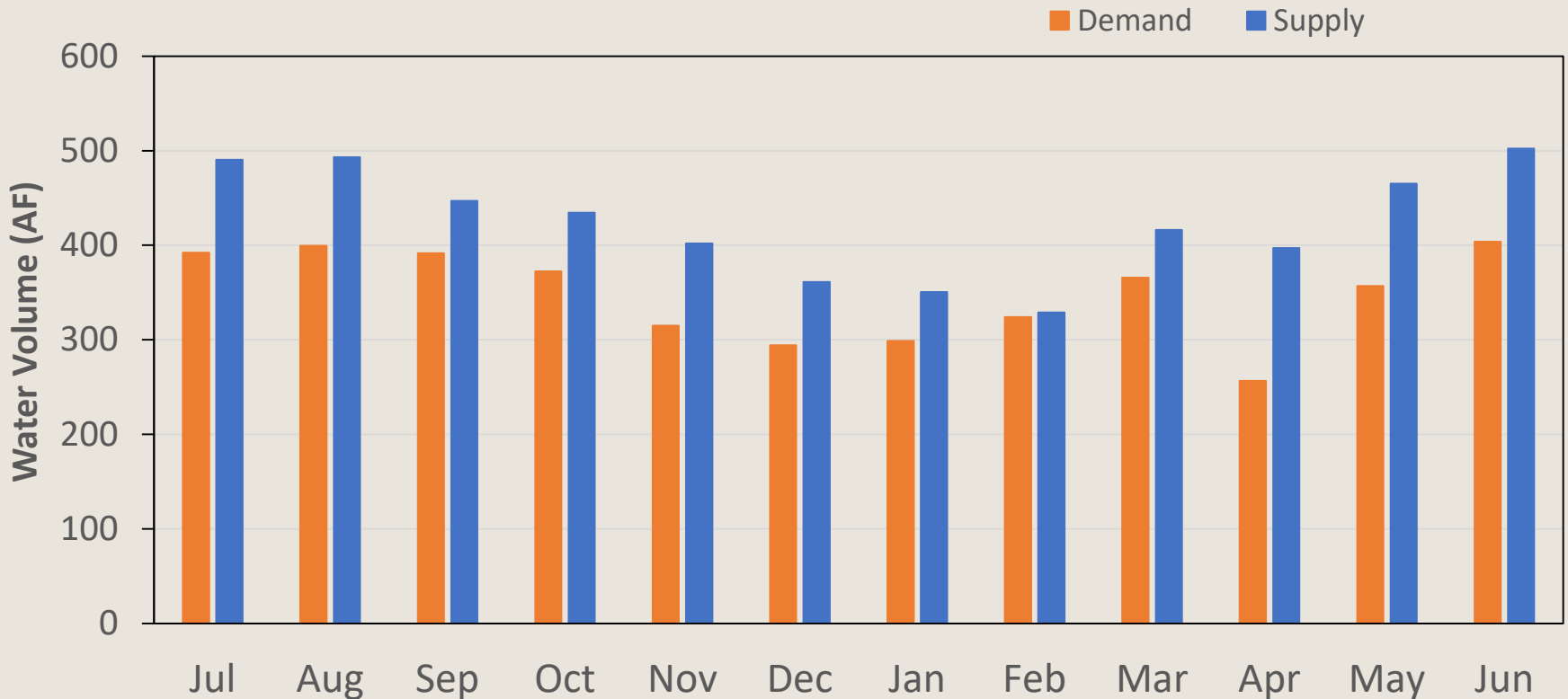
- All supplies from Groundwater Wells
 - 2020-2021: 4,908 AF
 - 2021-2022: 5,089 AF
 - **2022-2023: 5,089 AF**
 - Estimated dry year for AWSS



2022-2023

Water Supply vs Demand

✓ The City of Lompoc is predicted to be in surplus every month of the year.



Planned Water Shortage Response Actions

- City of Lompoc is already implementing locally-appropriate Level 1 and 2 actions throughout the year even when there is no water shortage
- Total reduction of **917.67 AF**
 - Provide Rebates on Plumbing Fixtures and Devices: 597 AF
 - Expand Public Information Campaign: 200 AF
 - Increase Water Waste Patrols: 121 AF

Table 5: Planned Water Shortage Response Actions			July 1, 2022	to	June 30, 2023	
Anticipated Shortage Level (Drop Down List of State Standard Levels 1 - 6)	ACTIONS: Demand Reduction, Supply Augmentation, and Other Actions. (Drop Down List) These are the only categories that will be accepted by the WUEdata online submittal tool. Select those that apply.	Is Action Already Being Implemented? (Y/N)	How much is action going to reduce the shortage gap?		When is shortage response action anticipated to be implemented?	
			Enter Amount	(Drop Down List) Select % or Volume Unit	Start Month	End Month
<i>Add additional rows as needed</i>						
1	Provide Rebates on Plumbing Fixtures and Devices	Yes	596.67	AF	January	December
2	Expand Public Information Campaign	Yes	200	AF	January	December
3	Increase Water Waste Patrols	Yes	121	AF	January	December
NOTES: Per EO N-7-22: Agency is implimenting locally appropriate Level 2 actions throughout the year even when there is no water shortage.						

Shortage Level Cross Walk

- Current actions result in a **22% Surplus**
- This exceeds the **Standard WSCP Level 2** requirement and is within the City of Lompoc Level 2.
- City of Lompoc will not have to take further actions to Level 3 until a **Standard WSCP Level 4** is required.

Water Shortage Contingency Plan

Section 8

The crosswalk between the City's five levels and the standard water shortage levels is shown in **Figure 8-1**.

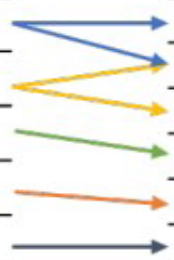
CITY OF LOMPOC SHORTAGE LEVEL	PERCENT SHORTAGE RANGE		STANDARD WSCP LEVEL	PERCENT SHORTAGE LEVEL
1	0 - 15%		1	10%
2	15 - 30%		2	20%
3	30 - 40%		3	30%
4	40 - 50%		4	40%
5	>50%		5	50%
			6	>50%

Figure 8-1. Water Shortage Levels Crosswalk

Ordinance No. 1697(22)

- Lompoc Municipal Code 13.04.060 Amendments
 - “The use of potable water for the irrigation of non-functional turf at commercial, industrial, and institutional sites; and provided, further, that the prohibition in this subsection shall not apply to trees and other perennial non-turf plantings or to the extent necessary to address an immediate health and safety need.”
 - Does not affect the following:
 - Residential lawns,
 - School and sports fields,
 - Parks,
 - Any other turf considered “functional.”

Ordinance No. 1697(22)

- Current Enforcement Language
 - “Violation of this Section shall be an infraction with a warning given for the first violation; a fine not exceeding \$50.00 for a second violation within one year; a fine not exceeding \$100.00 for a third violation within one year; and a fine not exceeding \$250.00 for each additional violation within one year.
- Proposed Additional Enforcement Language
 - “Alternatively, any violation of this Section is punishable by administrative penalty pursuant to Chapter 1.36.”
 - Addition of language clarifies the City’s ability to enforce violations of LMC 13.04.060 through the administrative penalty process.