

**Thompson Park Playground- Project 106359-01-Opt 1
Lompoc, CA**



A STRONG FOUNDATION IN PLAY FOR OVER 50 YEARS P: (435) 245-5055 / F: 435 245-5057 Tyler@gwpark.com

**Thompson Park Playground- Project 106359-01-Opt 1
Lompoc, CA**



A STRONG FOUNDATION IN PLAY FOR OVER 50 YEARS

P: (435) 245-5055 / F: 435 245-5057 Tyler@gwpark.com



**Thompson Park Playground- Project 106359-01-Opt 1
Lompoc, CA**



A STRONG FOUNDATION IN PLAY FOR OVER 50 YEARS

P: (435) 245-5055 / F: 435 245-5057 Tyler@gwpark.com



**Thompson Park Playground- Project 106359-01-Opt 1
Lompoc, CA**



P: (435) 245-5055 / F: 435 245-5057 Tyler@gwpark.com

A STRONG FOUNDATION IN PLAY FOR OVER 50 YEARS

**Thompson Park Playground- Project 106359-01-Opt 1
Lompoc, CA**



A STRONG FOUNDATION IN PLAY FOR OVER 50 YEARS / P: (435) 245-5055 / F: 435 245-5057 Tyler@gwpark.com

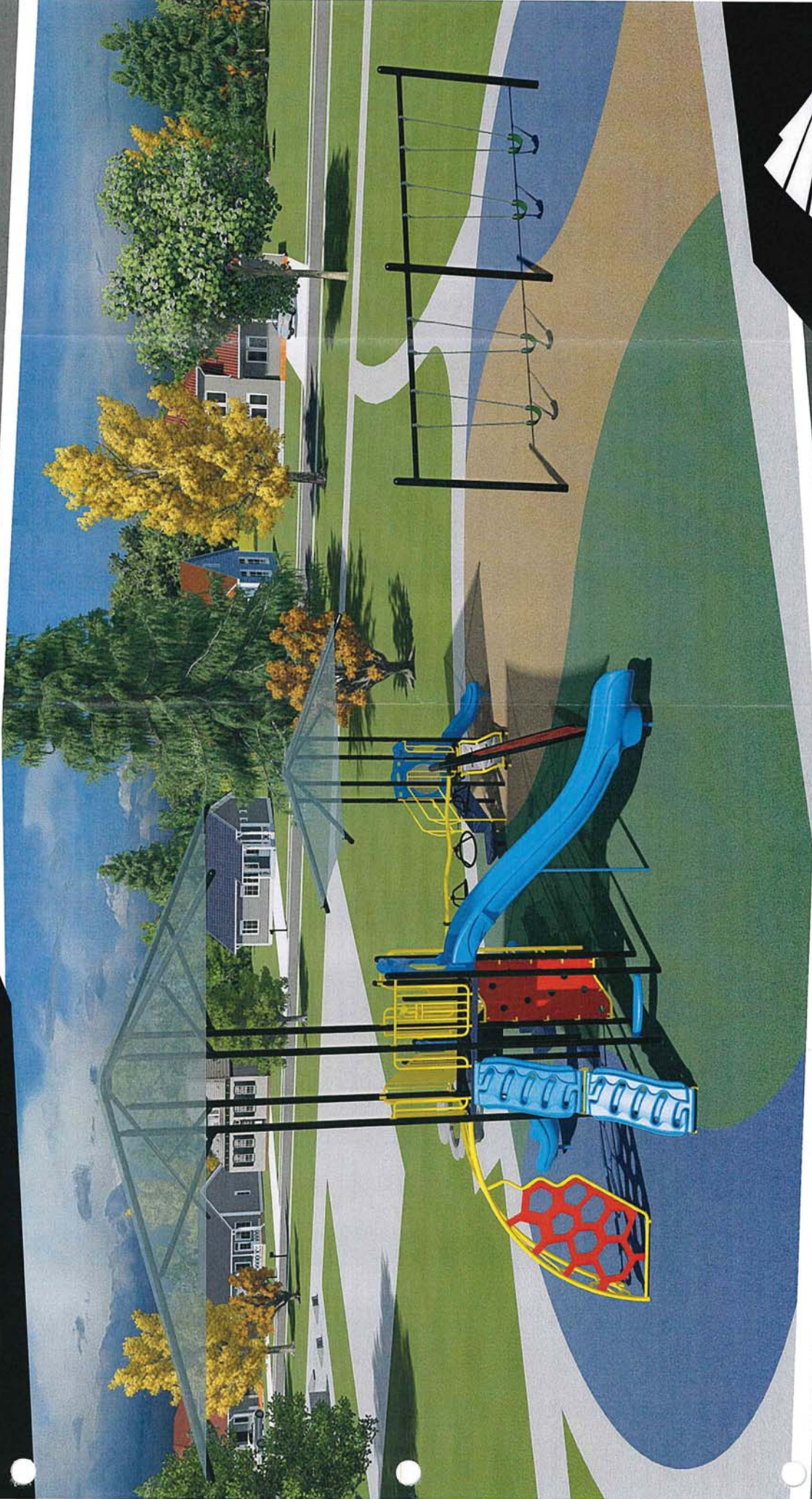
**Thompson Park Playground- Project 106359-01-Opt 1
Lompoc, CA**



P: (435) 245-5055 / F: 435 245-5057 Tyler@gwpark.com

A STRONG FOUNDATION IN PLAY FOR OVER 50 YEARS

**Thompson Park Playground- Project 106359-01-Opt 2
Lompoc, CA**



A STRONG FOUNDATION IN PLAY FOR OVER 50 YEARS P: (435) 245-5055 / F: 435 245-5057 Tyler@gwpark.com

**Thompson Park Playground- Project 106359-01-Opt 2
Lompoc, CA**



A STRONG FOUNDATION IN PLAY FOR OVER 50 YEARS

P: (435) 245-5055 / F: 435 245-5057 Tyler@gwpark.com



**Thompson Park Playground- Project 106359-01-Opt 2
Lompoc, CA**

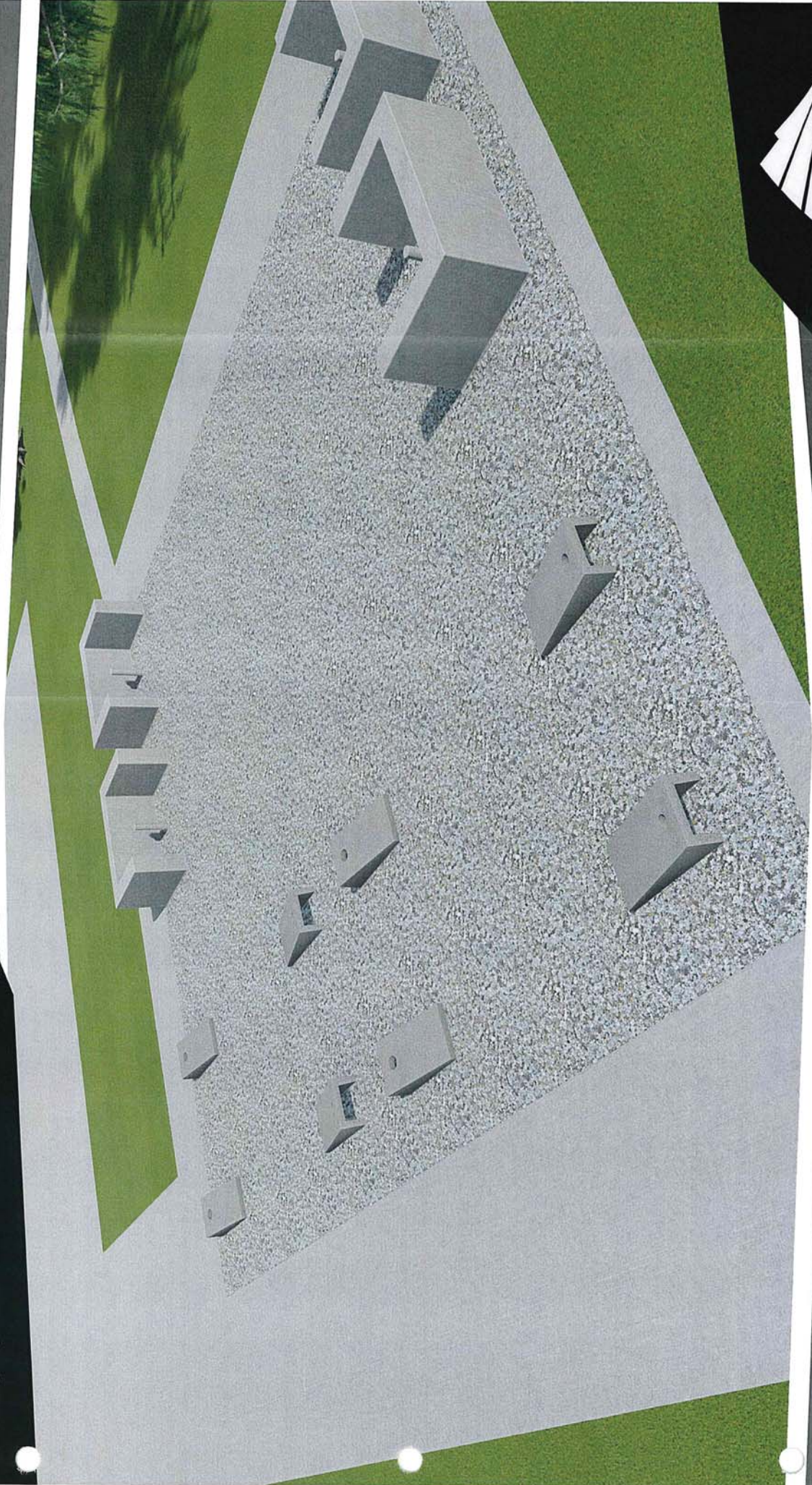


A STRONG FOUNDATION IN PLAY FOR OVER 50 YEARS

P: (435) 245-5055 / F: 435 245-5057 Tyler@gwpark.com



**Thompson Park Playground- Project 106359-01-Opt 2
Lompoc, CA**



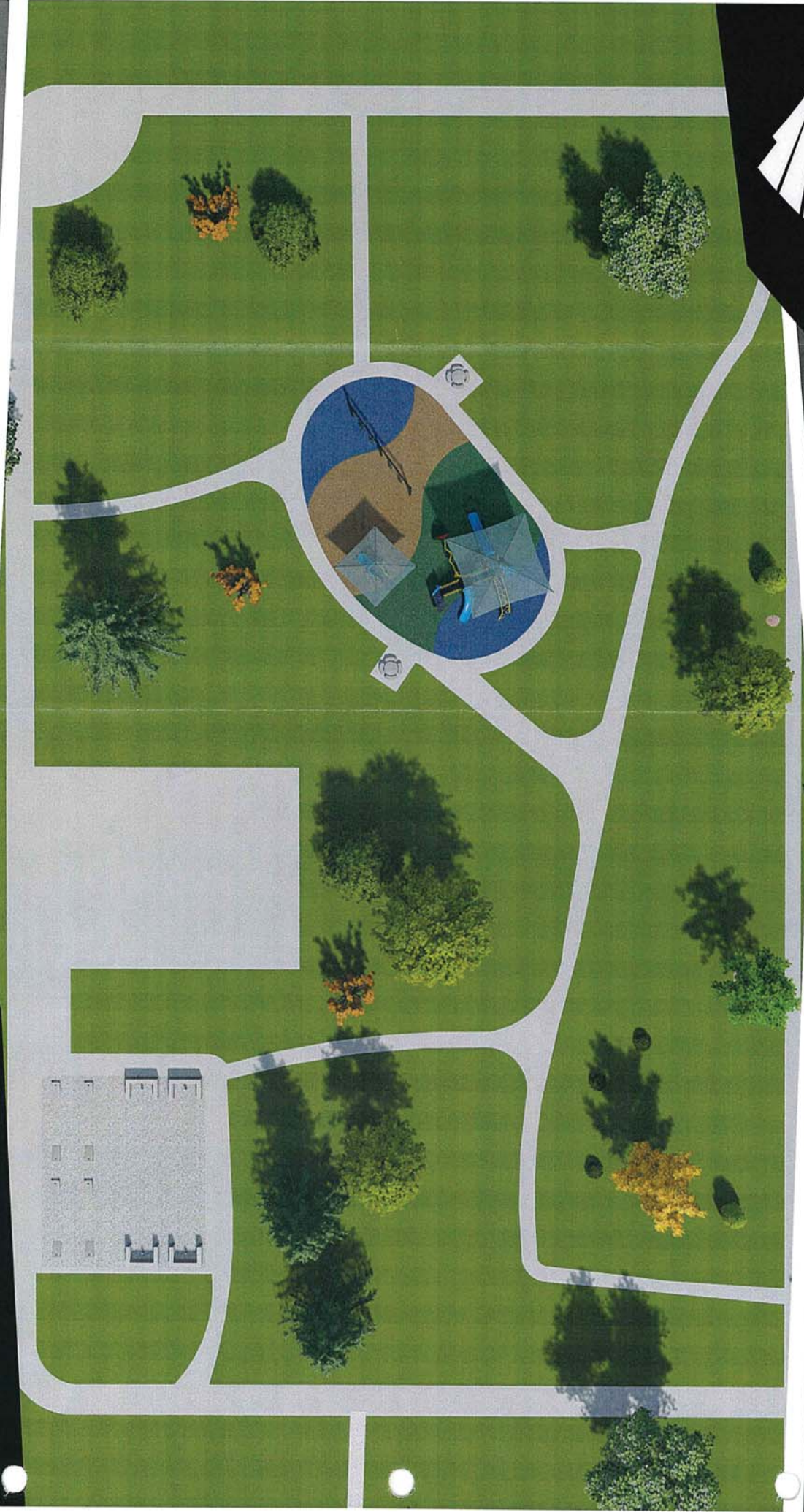
A STRONG FOUNDATION IN PLAY FOR OVER 50 YEARS P: (435) 245-5055 / F: 435 245-5057 Tyler@gwpark.com

**Thompson Park Playground- Project 106359-01-Opt 2
Lompoc, CA**



A STRONG FOUNDATION IN PLAY FOR OVER 50 YEARS P: (435) 245-5055 / F: 435 245-5057 Tyler@gwpark.com

**Thompson Park Playground- Project 106359-01-Opt 2
Lompoc, CA**



A STRONG FOUNDATION IN PLAY FOR OVER 50 YEARS P: (435) 245-5055 / F: 435 245-5057 Tyler@gwpark.com