



# REGIONAL FIRE COMMUNICATIONS FACILITY

November 2, 2021 Lompoc City Council Report  
Presented by Fire Chief Alicia Welch

# HISTORICAL BACKGROUND

- The Lompoc Fire Department's approved Master Plan written in November 2013 addresses dispatch challenges and recommended thoroughly exploring the purchase of dispatch services from Santa Barbara County
- REGIONAL DISPATCH IS NOT A NEW CONCEPT (Ventura County Regional Fire Dispatch Center, Contra Costa County, Jefferson County Communications Center in CO)
- The City of Lompoc has explored multiple dispatch platforms over the years

# PROJECT TIMELINE



- October 1, 2019 - County Board of Supervisors authorized the Santa Barbara County Fire Department to establish a Regional Fire Communications Facility (RFCF)
  - The existing dispatch center is currently run by Sheriff - for Sheriff, Fire and Ambulance
- Spring 2021- Santa Barbara County Fire District sent Draft Agreement to LFD
- Spring - Summer 2021- LFD Staff began meeting with some Lompoc elected officials for informal outreach
- City Staff conducted an analysis of the Agreement and explored alternate funding sources for dispatch. No grant options have been identified to this point
- The Cooperative Agreement has been vetted by: Finance, City Manager and City Attorney

# INITIAL COST PROJECTIONS



## Regional Dispatch Cost Estimate

- Financial commitment will be calculated on a per-call basis due annually
- It was estimated that LFD will respond to **4,153** calls for service for an annual cost for calls at **\$310,839.56**
- There will be an annual cost for fixed expenses estimated at **\$21,218.80**, which brings the total participant cost for LFD to approximately **\$332,058.36** annually

# PARTNER STATUS



All Santa Barbara County Fire Agencies except Lompoc have committed to the RFCF:

- **Santa Barbara County Fire Protection District**
- **Santa Barbara City Fire Department**
- **Santa Maria Fire Department**
- **Carpinteria-Summerland Fire Protection District**
- **Guadalupe Fire Department**
- **Montecito Fire Protection District**

## Terms

- Five-year contracts
- Three-year renewal terms after initial five years
- If Lompoc signs, our annual cost will be: **\$332,058.36**
- If Lompoc Opts out, partner costs will be higher

# FINAL COSTS - ALL AGENCIES



Including MTO, STB, SM, LMP, CRP & Guad

Agency	Calls for Service	Annual Cost - Call for Service	Annual Cost - Fixed Expense	Total Cost Per Agency
Santa Barbara Co. FPD	15,682	\$ 1,116,098	\$ 20,286	\$ 1,136,384
City of Santa Barbara	10,341	\$ 735,976	\$ 20,286	\$ 756,261
City of Santa Maria	9,730	\$ 692,490	\$ 20,286	\$ 712,776
City of Lompoc	4,153	\$ 295,572	\$ 20,286	\$ 315,857
Carpinteria-Summerland FPD	2,072	\$ 147,466	\$ 20,286	\$ 167,751
Montecito FPD	1,309	\$ 93,162	\$ 20,286	\$ 113,448
City of Guadalupe	800	\$ 56,937	\$ 20,286	\$ 77,222
<b>TOTALS</b>	<b>44,087</b>	<b>\$ 3,137,700</b>	<b>\$ 142,000</b>	<b>\$ 3,279,700</b>
<b>Calls Per Service Rate \$</b>	<b>71.17</b>			

# POSSIBLE ADDITIONAL COSTS



## Redundant Dispatch Center (to be placed in Santa Maria)

- Will act as a full stand-alone center if the main RFCF goes down
  - However, RFCF will be designed for resiliency
- We currently do NOT have this capability in the City or the County
- We don't have the actual cost however, it is projected to be approximately \$700,000 (over 10 years) divided by all participating agencies
- Current Estimate: All Agencies share cost -
- LMP City is approximately 9% of total call volume or \$6,300/year
  - I will return to City Council if/when an update occurs

# POSSIBLE FUTURE SAVINGS



- Fire Traffic Preemption (reallocate entire amount toward fire dispatch) at **\$250,000**
- Fire Station Structural Evaluation and Mitigation (recommends new build) at **\$3,734,323**



# RFCF RATIONALE/ADVANTAGES



- All Fire Agencies function as **ONE** - handling fire and EMS dispatching for **SEVEN** departments
- RFCF will feature Automatic Vehicle Location (AVL) systems in all apparatus, tied with the CAD system
- Closest, most appropriate fire/EMS resource will be sent regardless of jurisdiction
  - Outcome will be improved response times and customer service
- Fire-centric expert emergency incident interrogation and dispatching
  - Robust staffing for major/multiple incidents (Tactical Radio Ops)
  - 100% **Emergency Medical Dispatch** screening - accredited physician directed protocols including pre-arrival/post-dispatch instructions - creates a common operating picture (call typing)

# ADVANTAGES CONTINUED



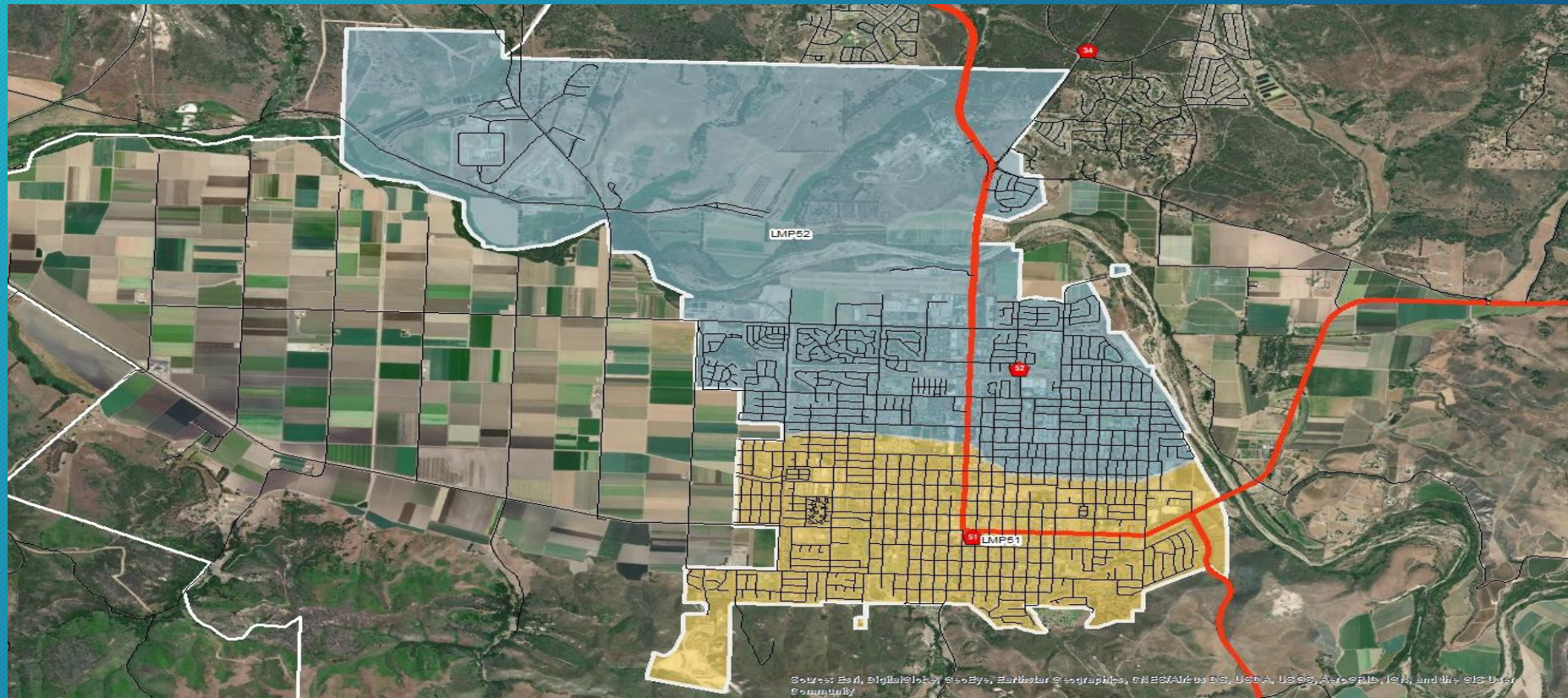
More streamlined and efficient emergency fire/EMS dispatching

- Reduces calls for service being transferred to multiple dispatch centers - which reduces response times
- Full boundary drop - minimizes the duplication of effort resulting in out of position resources for the “next call”
- In effect, we go from a **two** station department to a **seven** station department
- Shared Governance Model - each Agency will be well-represented
  - Joint Executive Committee - budget and funding/decision making body
  - Joint Operations Committee - nuts and bolts of deployment/problem solving body

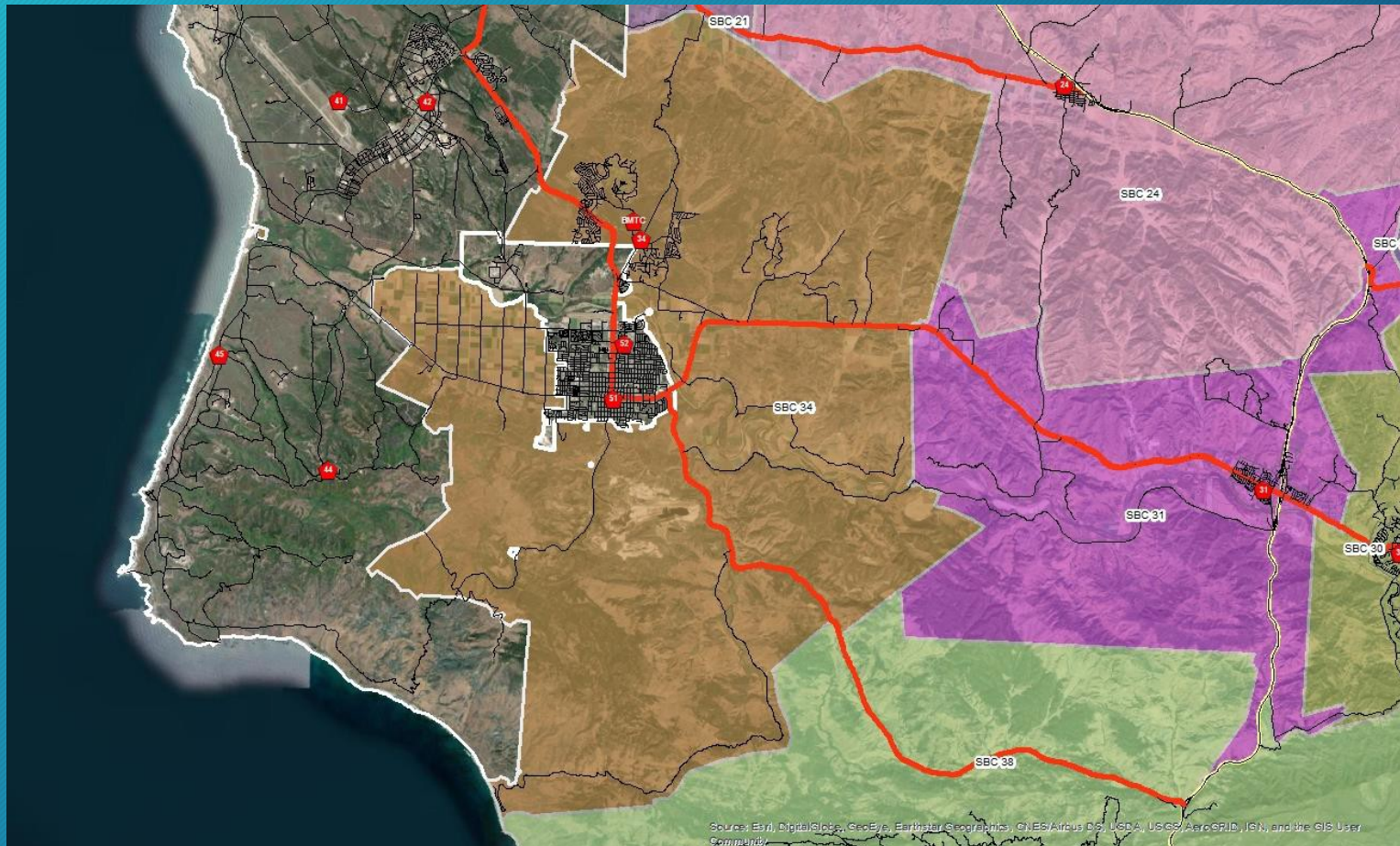
# PROGRESSION OF FIRE/EMS CALL



# CITY OF LOMPOC FD RESPONSE AREAS



# CITY OF LOMPOC RESPONSE AREAS - AUGMENTED



# WHY BOUNDARY DROPS MATTER



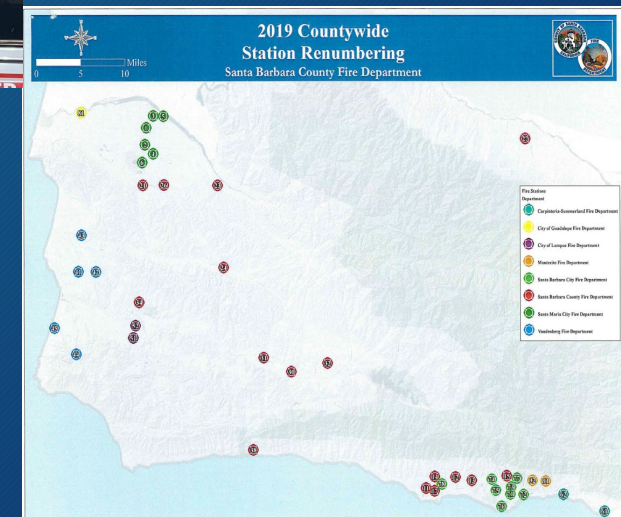
- Assume SBF D is shopping at the Albertson's Market at 1500 N. H Street
- There is a cardiac arrest at the Starbuck's at 1436 N. H Street
- Presently this incident would be received by LPD PSAP to be dispatched to an LFD resource (likely Engine 52 and AMR)
- Boundary drop will identify the closest available resource - regardless of department or district



# INCIDENT EXAMPLE - SANTA LUCIA FIRE



- 911 calls immediately transferred to The RFCF - helps assure appropriate resources are getting dispatched promptly, keeping fires in check
- All 37 fire stations in County immediately available without multi-jurisdictional dispatch delays
  - Response units and move-up units immediately sent
- Dedicated dispatch channel along with multiple tactical channels
- Dedicated Tactical Radio Operator - dispatcher assigned to the single incident with no distracting/competing duties



# RFCF STAFFING MODEL



- Dedicated Call Takers - no distracting law duties
- Dedicated Dispatcher - no distracting law duties
- Tactical Radio Operators / Incident Dispatcher - follows each call with no competing/collateral duties
- 24 FTE's - which equates to a minimum of 4 dispatchers on duty per shift

## Ventura County Regional Fire Dispatch Center





# STAFF RECOMMENDED FUNDING



1. General Fund - funds will need to be placed into FD budget to offset the payments to the RFCF
2. Measure I and or Q
3. Staff respectfully requests this Agreement be referred to the Finance Director for discussion and direction

# RECOMMENDATION/REQUESTS



Tonight's meeting:

- Vote to authorize Staff/City Manager to sign the Cooperative Dispatch Agreement
- Suggest guidance from Council and Director Albro on funding

# THANK YOU FOR YOUR CONSIDERATION



This is an important initiative that will improve firefighter and public safety

The Regional Fire Communications Facility most assuredly brings positive improvements to Lompoc's emergency service delivery capabilities

# QUESTIONS?



Contact Fire Chief Alicia Welch at [a\\_welch@ci.lompoc.ca.us](mailto:a_welch@ci.lompoc.ca.us)