

## Santa Ynez River Valley Groundwater Basin

The Sustainable Groundwater Management Act (SGMA), enacted January 2015, creates a new framework for groundwater management. The management plan developed by this process will regulate future groundwater use and will be completed in early 2022.

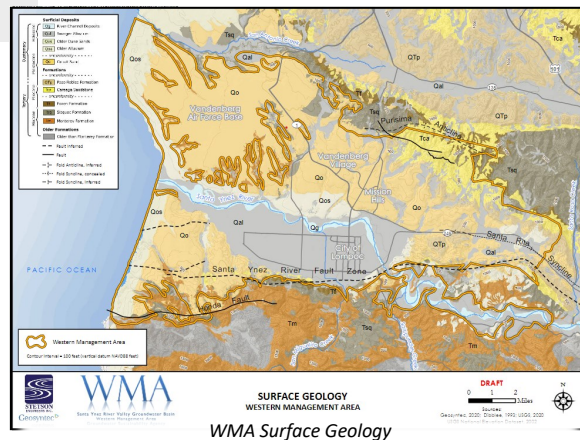
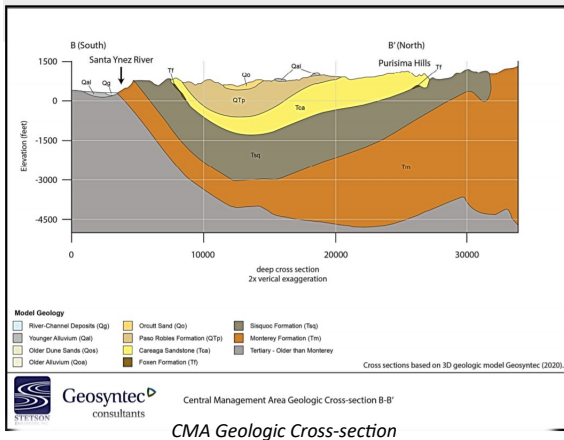
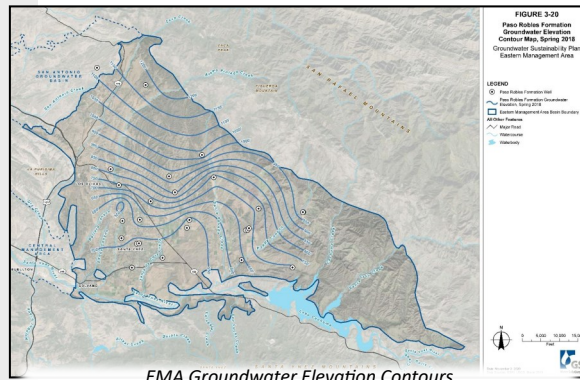
In accordance with SGMA, DRAFT Hydrogeological Conceptual Models (HCM) have been prepared for each management area within the Santa Ynez River Groundwater Basin, including the Eastern Management Area (EMA), the Central Management Area (CMA), and the Western Management Area (WMA). Each HCM describes the basin setting and outlines the physical characteristics of the specific management area, identifies principal aquifers, and the uses and users of groundwater. The HCM documents for the EMA, CMA, and WMA are **now available for public review and comment at [SantaYnezWater.org](http://SantaYnezWater.org)**. Additional DRAFT documents describing groundwater conditions will be released for public review and comment, soon.

Check [SantaYnezWater.org](http://SantaYnezWater.org) for schedule of Public Meetings and Workshops

### Hydrogeological Conceptual Model:

Provides understanding of basin setting, physical characteristics and basin geometry (geology), hydrogeologic conditions, land use, and groundwater uses and users.

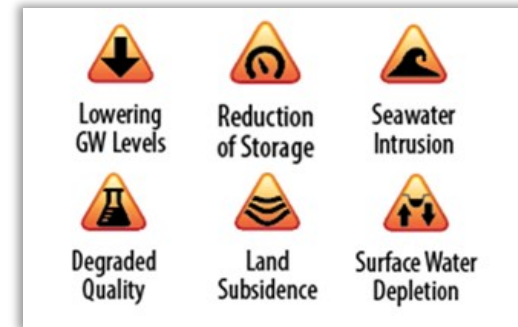
HCMs include a series of geologic maps and scaled cross-sections to provide a representation and geographic view of different data sets, as demonstrated by these examples from the draft HCMs.



### Sustainable Management Criteria

Sustainable Groundwater Management is defined by the management and use of groundwater in a manner that can be maintained during the planning and implementation horizon, 20 years, without causing undesirable results.

Avoidance of undesirable results is measured through **six sustainability indicators:**



The Groundwater Sustainability Agency Committees will request public feedback on the **six sustainability indicators** and associated undesirable results based on findings presented by the basin's consultants. Public feedback to establish undesirable results thresholds will be considered to work toward sustainable groundwater management. Public participation is important at this step to develop appropriate undesirable results thresholds in order to develop a plan for sustainable groundwater management. For meeting announcements and information on how to participate, please visit the website at [SantaYnezWater.org](http://SantaYnezWater.org).

For more information, meeting announcements, and draft documents, please visit

**[SantaYnezWater.org](http://SantaYnezWater.org)**  
or call (805) 693-1156 ext. 403

