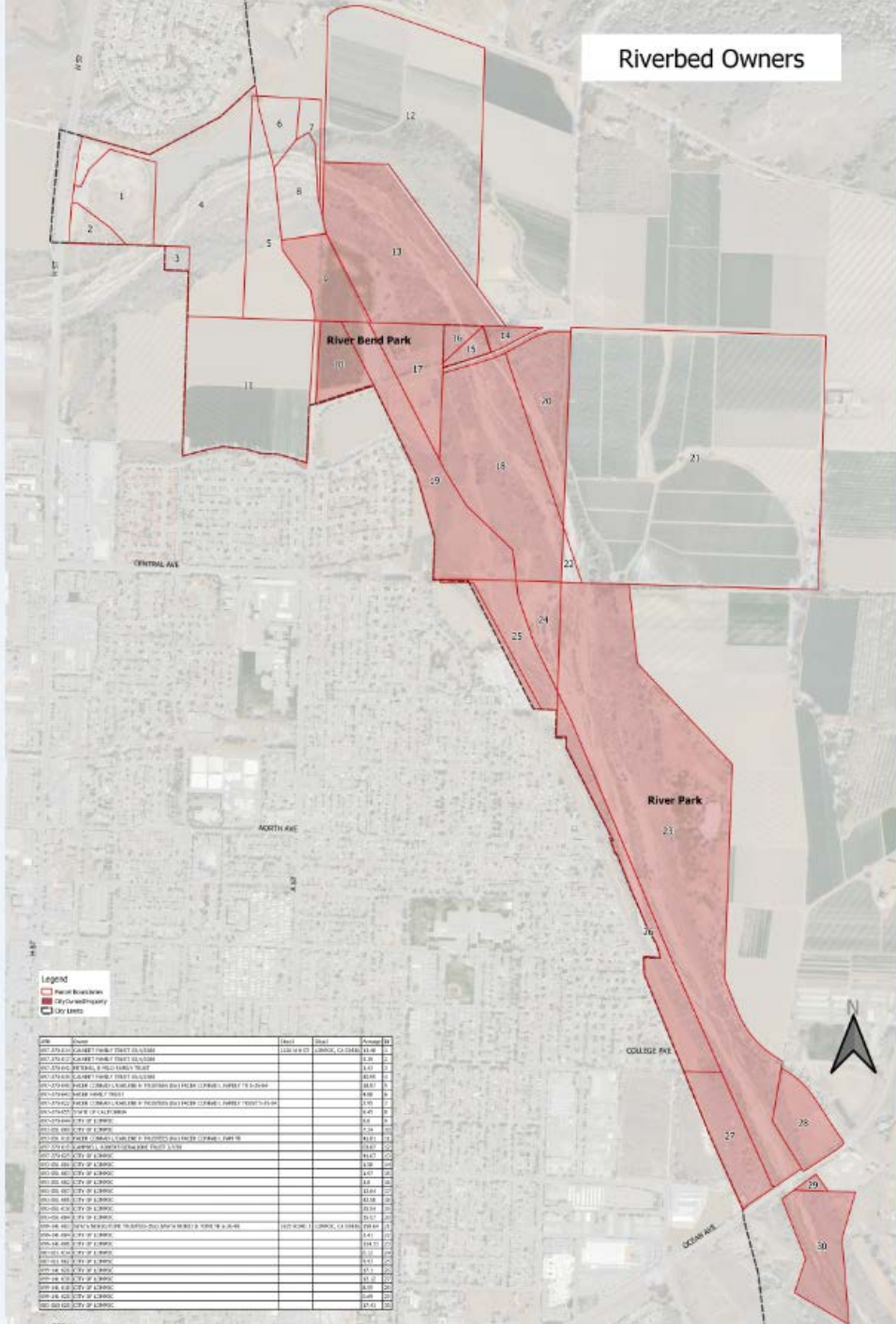


Santa Ynez Riverbed Properties

City Council Meeting
August 18, 2020

Riverbed Owners

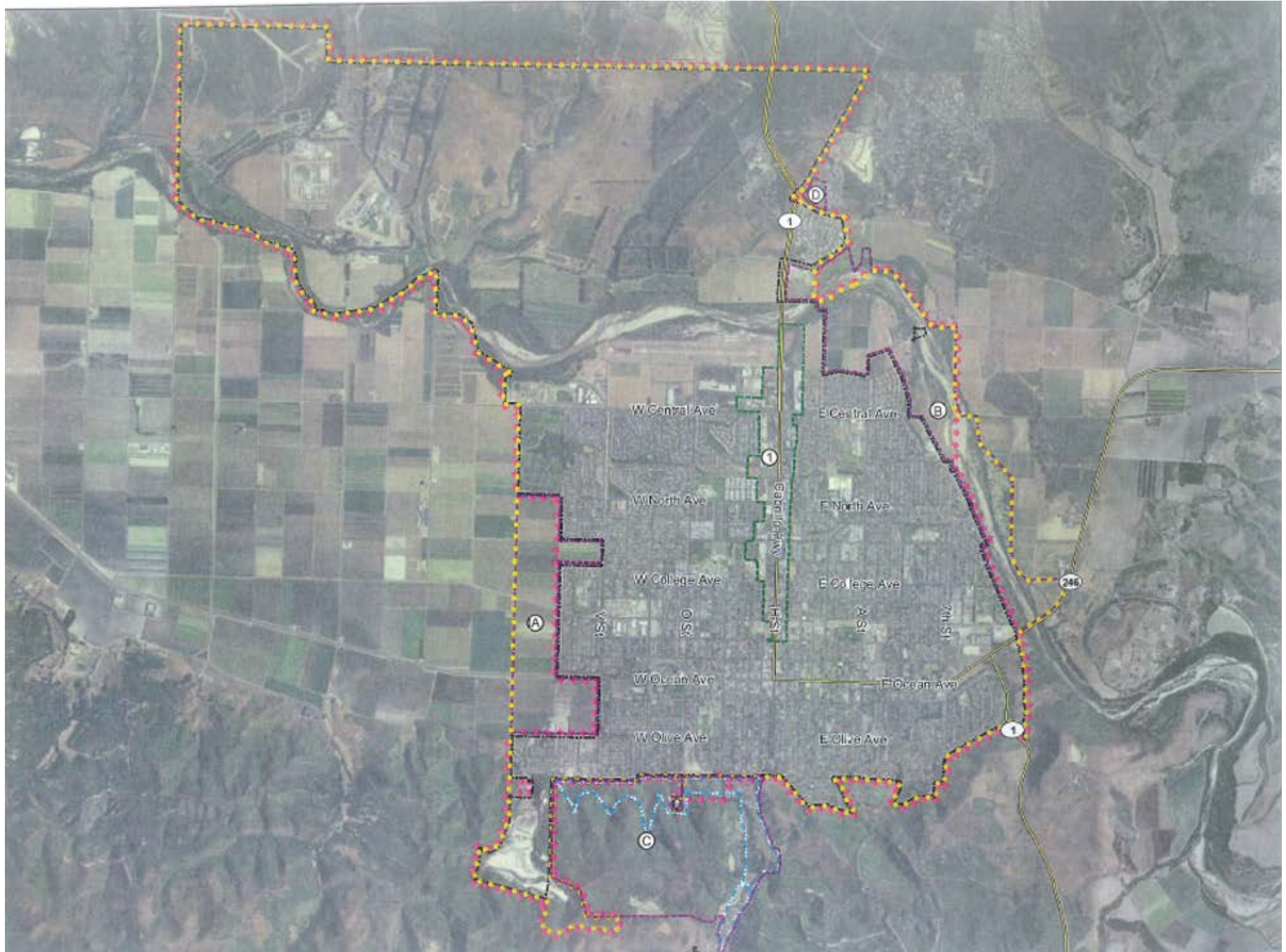


Legend
 [Red outline] Parcel Boundary
 [Red fill] City-owned Property
 [Black outline] City Limits

APN	Owner	Area	Dist	Acres	Notes
001-070-001-001	LAURET TRUST DELISSA	0.08	1	0.08	
001-070-001-002	LAURET TRUST DELISSA	0.08	2	0.08	
001-070-001-003	LAURET TRUST DELISSA	0.08	3	0.08	
001-070-001-004	LAURET TRUST DELISSA	0.08	4	0.08	
001-070-001-005	LAURET TRUST DELISSA	0.08	5	0.08	
001-070-001-006	LAURET TRUST DELISSA	0.08	6	0.08	
001-070-001-007	LAURET TRUST DELISSA	0.08	7	0.08	
001-070-001-008	LAURET TRUST DELISSA	0.08	8	0.08	
001-070-001-009	LAURET TRUST DELISSA	0.08	9	0.08	
001-070-001-010	LAURET TRUST DELISSA	0.08	10	0.08	
001-070-001-011	LAURET TRUST DELISSA	0.08	11	0.08	
001-070-001-012	LAURET TRUST DELISSA	0.08	12	0.08	
001-070-001-013	LAURET TRUST DELISSA	0.08	13	0.08	
001-070-001-014	LAURET TRUST DELISSA	0.08	14	0.08	
001-070-001-015	LAURET TRUST DELISSA	0.08	15	0.08	
001-070-001-016	LAURET TRUST DELISSA	0.08	16	0.08	
001-070-001-017	LAURET TRUST DELISSA	0.08	17	0.08	
001-070-001-018	LAURET TRUST DELISSA	0.08	18	0.08	
001-070-001-019	LAURET TRUST DELISSA	0.08	19	0.08	
001-070-001-020	LAURET TRUST DELISSA	0.08	20	0.08	
001-070-001-021	LAURET TRUST DELISSA	0.08	21	0.08	
001-070-001-022	LAURET TRUST DELISSA	0.08	22	0.08	
001-070-001-023	LAURET TRUST DELISSA	0.08	23	0.08	
001-070-001-024	LAURET TRUST DELISSA	0.08	24	0.08	
001-070-001-025	LAURET TRUST DELISSA	0.08	25	0.08	
001-070-001-026	LAURET TRUST DELISSA	0.08	26	0.08	
001-070-001-027	LAURET TRUST DELISSA	0.08	27	0.08	
001-070-001-028	LAURET TRUST DELISSA	0.08	28	0.08	
001-070-001-029	LAURET TRUST DELISSA	0.08	29	0.08	
001-070-001-030	LAURET TRUST DELISSA	0.08	30	0.08	

Property Details

- 30 properties shown on the map
- There are various owners but the majority of the parcels are owned by the City (19 parcels)
- Some properties are within the City's Sphere of Influence (North of Barton Ave), but most are not



Pros/Cons Annexation

Pros

- More Local Control
- More Responsive Government

Cons

- Increased responsibilities / Suppression Costs to Fire/Police (High Wildfire Hazard area / Homelessness)
- Increased Calls for Service (No Mutual Aid)
- Stormwater permitting
- Endangered Species/Critical Habitat areas

Associated Costs

- Fiscal Impact Study is required (General Plan policy 4.6)
- Environmental Review
- LAFCO (Application/Processing/Staff)

Final Comments

- Comments, questions and/or direction to staff