

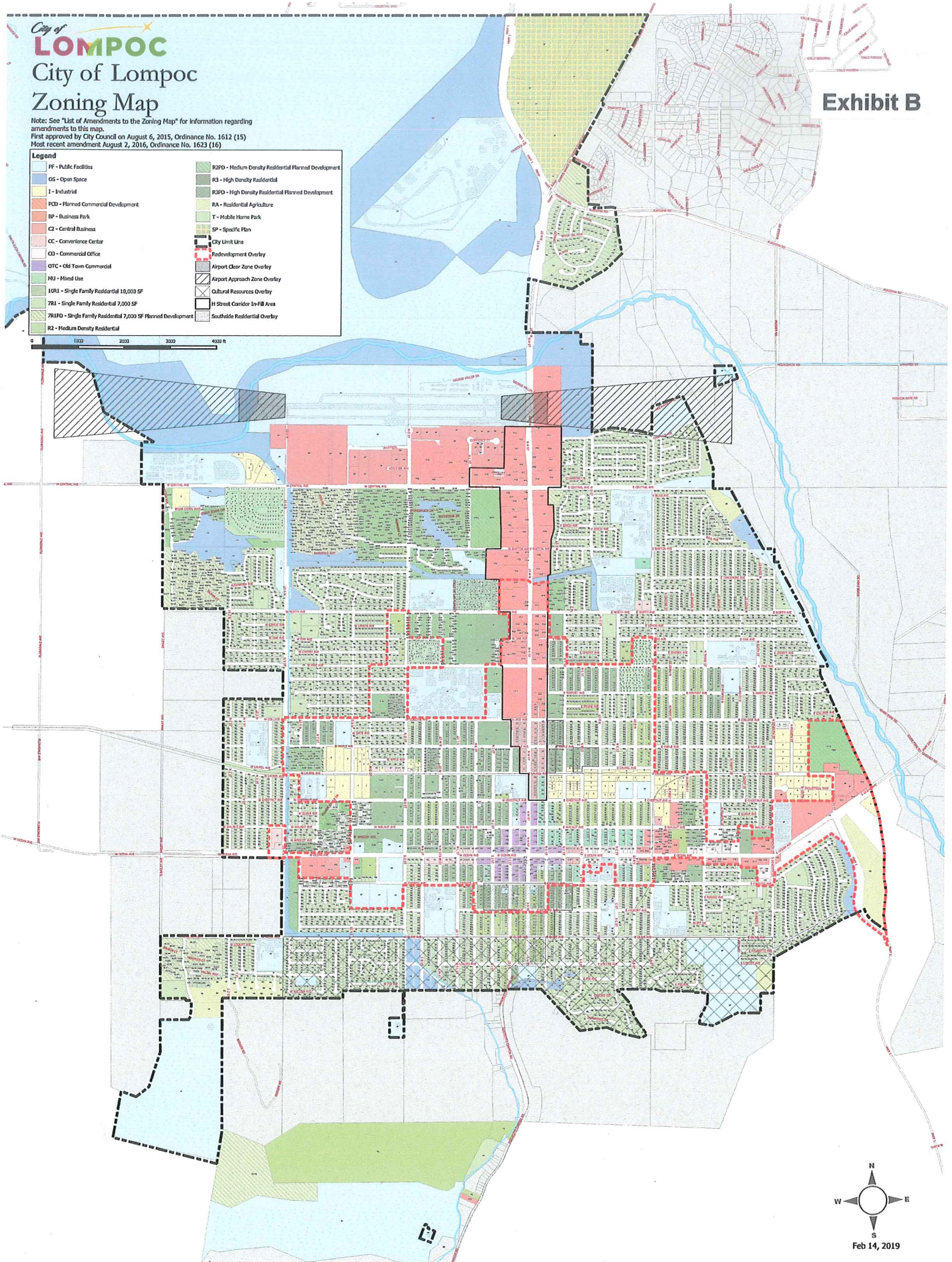
City of Lompoc Zoning Map

Note: See "List of Amendments to the Zoning Map" for information regarding amendments to this map.
First approved by City Council on August 6, 2015, Ordinance No. 1612 (15)
Most recent amendment August 2, 2016, Ordinance No. 1623 (16)

Legend

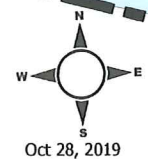
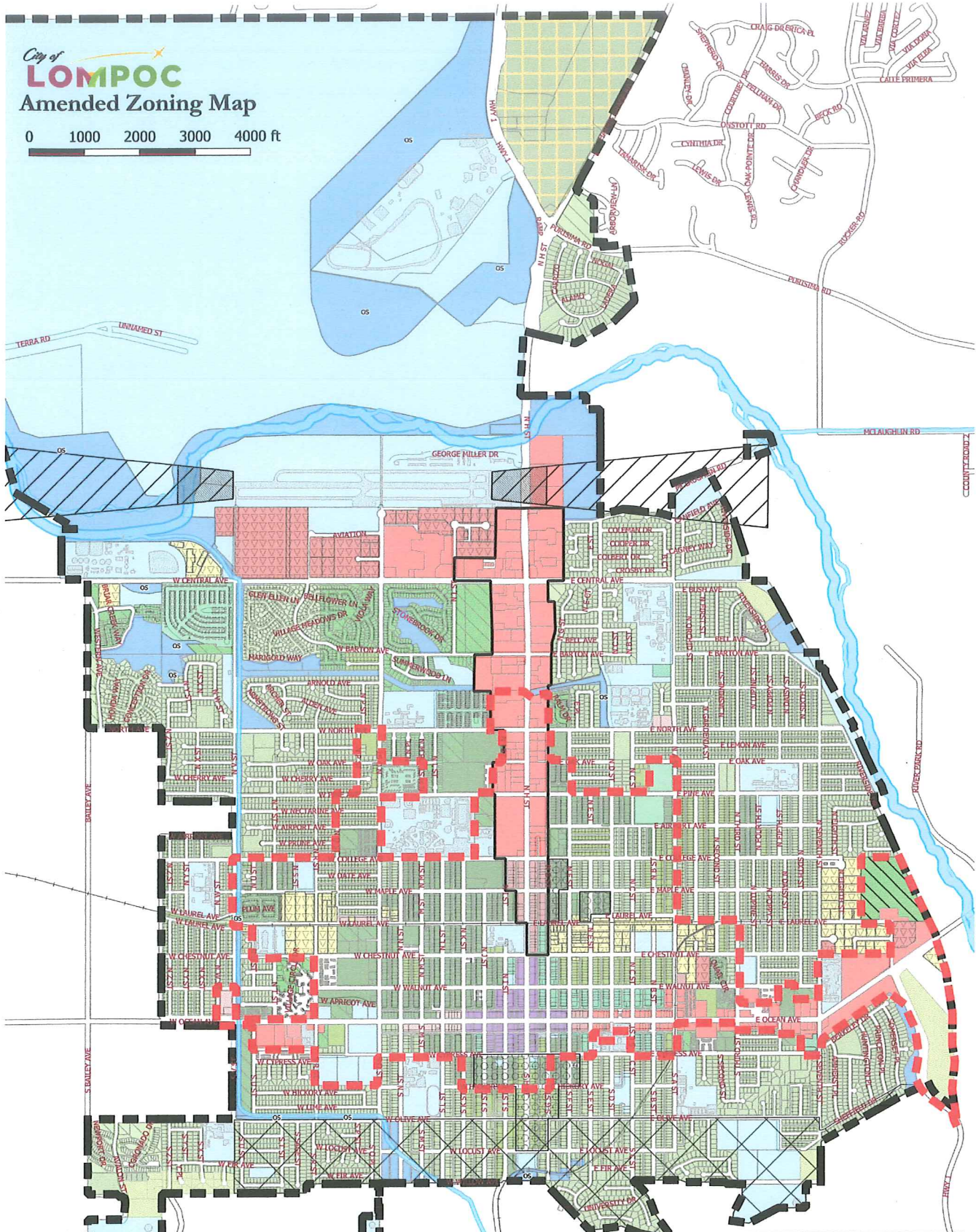
PF - Public Facilities	R2PD - Medium Density Residential Planned Development
OS - Open Space	R3 - High Density Residential
I - Industrial	R3PD - High Density Residential Planned Development
PCD - Planned Commercial Development	RA - Residential Agriculture
BP - Business Park	T - Mobile Home Park
C2 - Central Business	SP - Specific Plan
CC - Convenience Center	City Limit Line
CO - Commercial Office	Redevelopment Overlay
OTC - Old Town Commercial	Airport Clear Zone Overlay
MU - Mixed Use	Airport Approach Zone Overlay
IGRL - Single Family Residential 10,000 SF	Cultural Resources Overlay
7RL - Single Family Residential 7,000 SF	H Street Corridor In-Fill Area
7RLFD - Single Family Residential 7,000 SF Planned Development	Southside Residential Overlay
R2 - Medium Density Residential	

0 1000 2000 3000 4000 ft



City of **LOMPOC**
Amended Zoning Map

0 1000 2000 3000 4000 ft



Oct 28, 2019

Legend

- | | | |
|--|--|-------------------------------|
| PF - Public Facilities | 7R1 - Single Family Residential 7,000 SF | City Limit Line |
| OS - Open Space | 7R1PD - Single Family Residential 7,000 SF Planned Development | Redevelopment Overlay |
| I - Industrial | R2 - Medium Density Residential | Airport Clear Zone Overlay |
| PCD - Planned Commercial Development | R2PD - Medium Density Residential Planned Development | Airport Approach Zone Overlay |
| BP - Business Park | R3 - High Density Residential | Cultural Resources Overlay |
| CB - Central Business | R3PD - High Density Residential Planned Development | H Street Overlay |
| CC - Convenience Center | RA - Residential Agriculture | Southside Residential Overlay |
| OTC - Old Town Commercial | MH - Mobile Home Park | Special Event Overlay |
| MU - Mixed Use | SP - Specific Plan | Planned Development Overlay |
| 10R1 - Single Family Residential 10,000 SF | | |