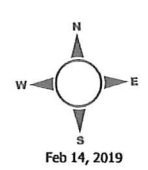
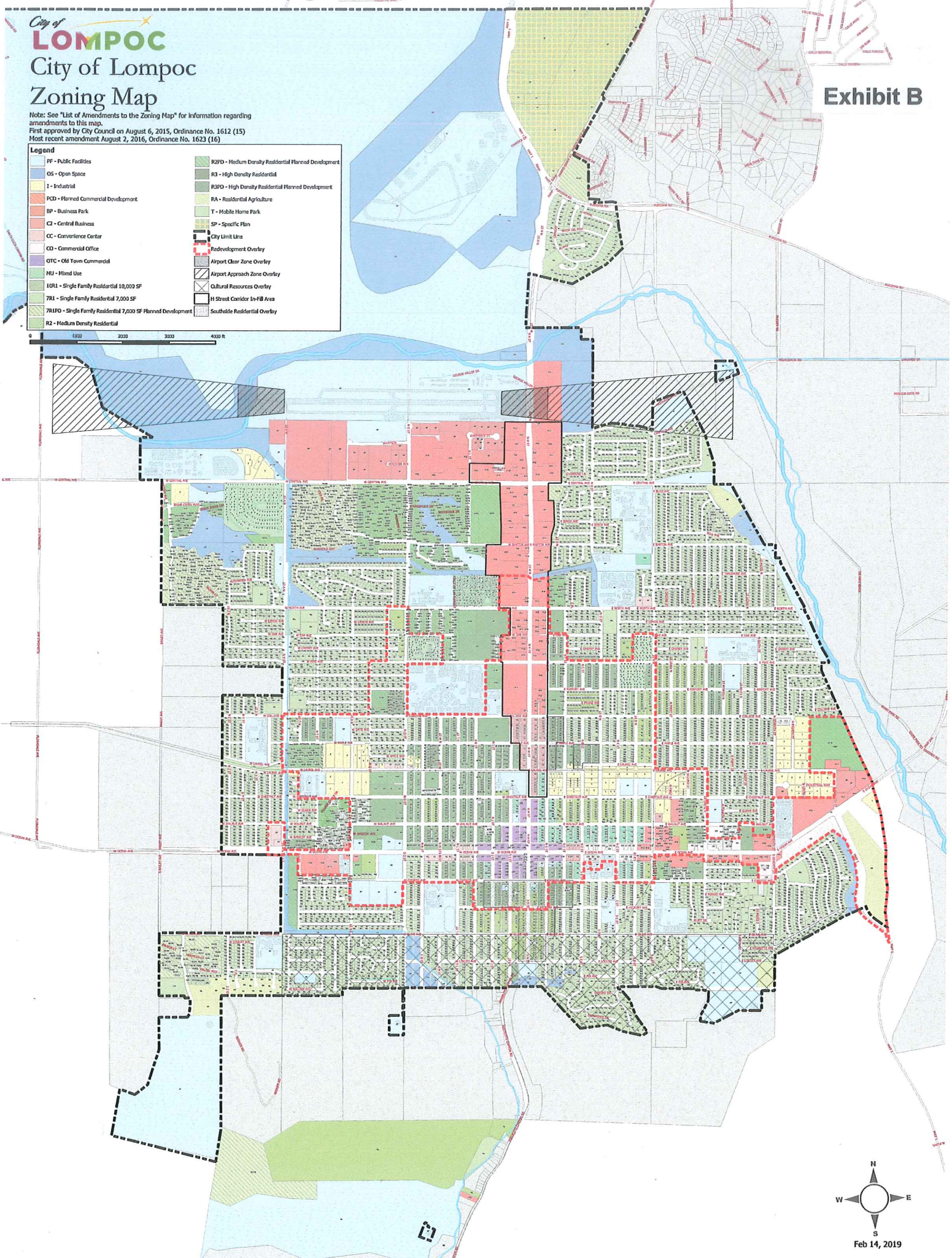


# City of Lompoc Zoning Map

Note: See "List of Amendments to the Zoning Map" for information regarding amendments to this map.  
First approved by City Council on August 6, 2015, Ordinance No. 1612 (15)  
Most recent amendment August 2, 2016, Ordinance No. 1623 (16)

Legend	
PF - Public Facilities	R2PD - Medium Density Residential Planned Development
OS - Open Space	R3 - High Density Residential
I - Industrial	R3PD - High Density Residential Planned Development
PCD - Planned Commercial Development	RA - Residential Agriculture
BP - Business Park	T - Mobile Home Park
C2 - Central Business	SP - Specific Plan
CC - Convenience Center	City Limit Line
CO - Commercial Office	Redevelopment Overlay
OTC - Old Town Commercial	Airport Clear Zone Overlay
MU - Mixed Use	Airport Approach Zone Overlay
IGRL - Single Family Residential 10,000 SF	Cultural Resources Overlay
7R1 - Single Family Residential 7,000 SF	H Street Corridor In-Fill Area
7R1FD - Single Family Residential 7,000 SF Planned Development	Southside Residential Overlay
R2 - Medium Density Residential	

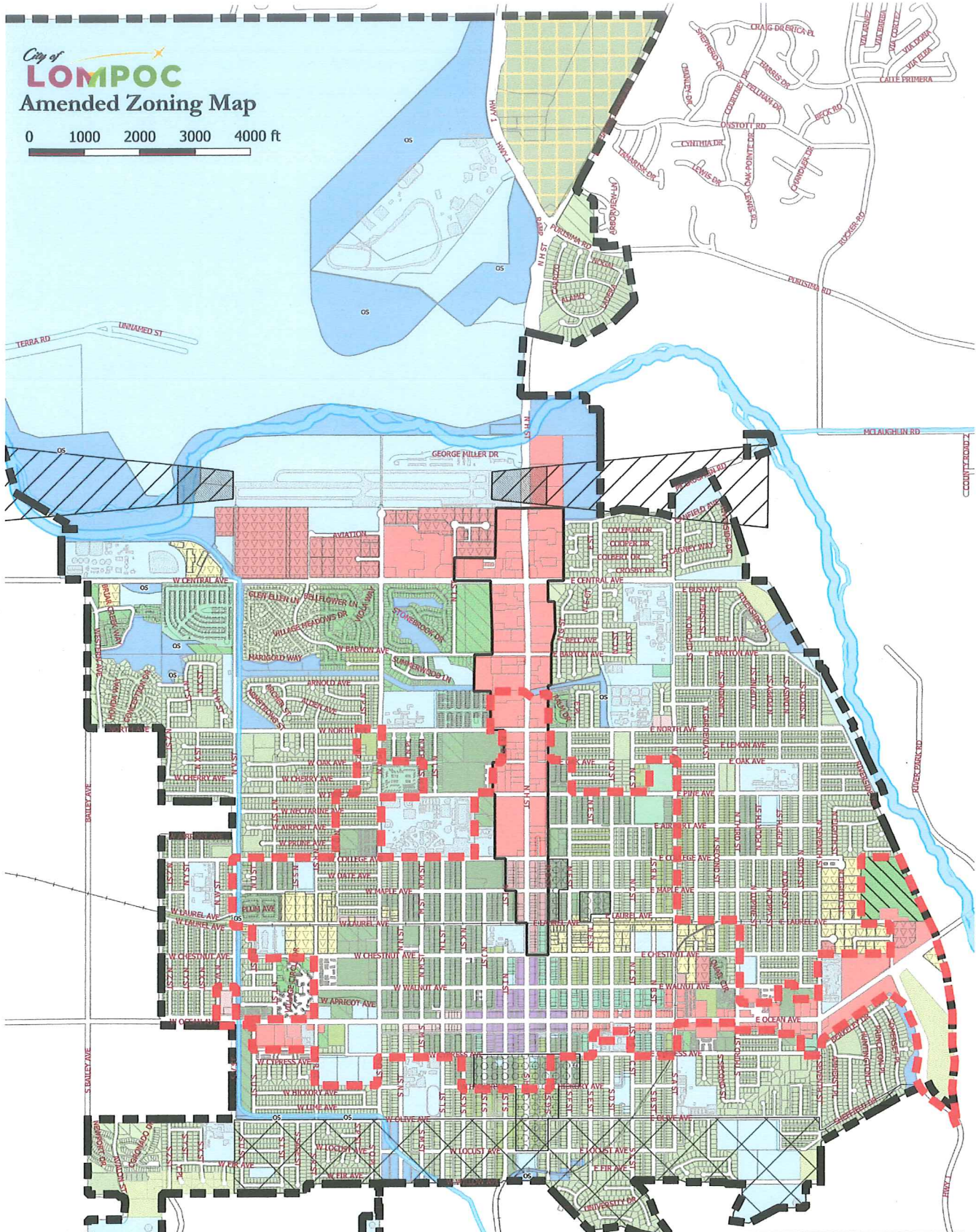
0 1000 2000 3000 4000 ft





City of **LOMPOC**  
Amended Zoning Map

0 1000 2000 3000 4000 ft



Oct 28, 2019

**Legend**

PF - Public Facilities	7R1 - Single Family Residential 7,000 SF	City Limit Line
OS - Open Space	7R1PD - Single Family Residential 7,000 SF Planned Development	Redevelopment Overlay
I - Industrial	R2 - Medium Density Residential	Airport Clear Zone Overlay
PCD - Planned Commercial Development	R2PD - Medium Density Residential Planned Development	Airport Approach Zone Overlay
BP - Business Park	R3 - High Density Residential	Cultural Resources Overlay
CB - Central Business	R3PD - High Density Residential Planned Development	H Street Overlay
CC - Convenience Center	RA - Residential Agriculture	Southside Residential Overlay
OTC - Old Town Commercial	MH - Mobile Home Park	Special Event Overlay
MU - Mixed Use	SP - Specific Plan	Planned Development Overlay
10R1 - Single Family Residential 10,000 SF		