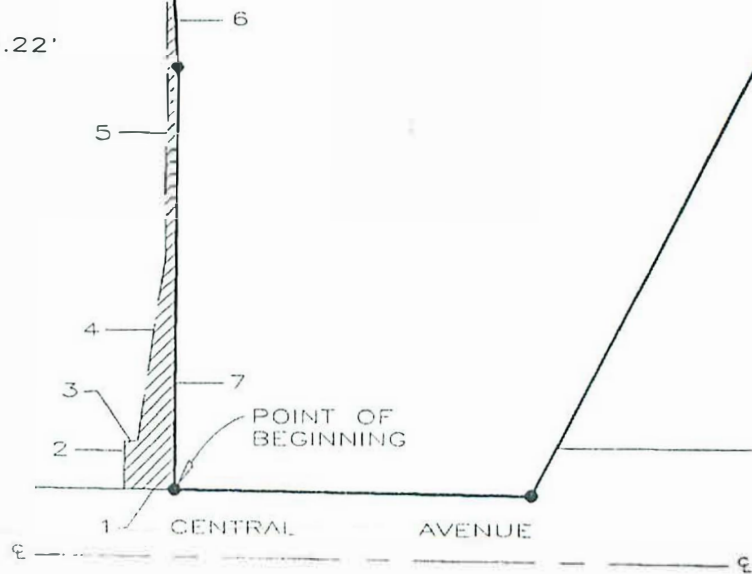




PARCEL 2

PARCEL 1

- 1 N 89°13'10" W - 26.50'
- 2 N 0°46'50" E - 25.00'
- 3 S 89°13'10" E - 7.00'
- 4 N 8°59'36" E - 98.01'
- 5 N 0°46'50" E - 164.33'
- 6 DELTA = 9°30'44"
RADIUS = 400.00'
LENGTH = 66.41'
- 7 S 0°46'50" W - 220.22'

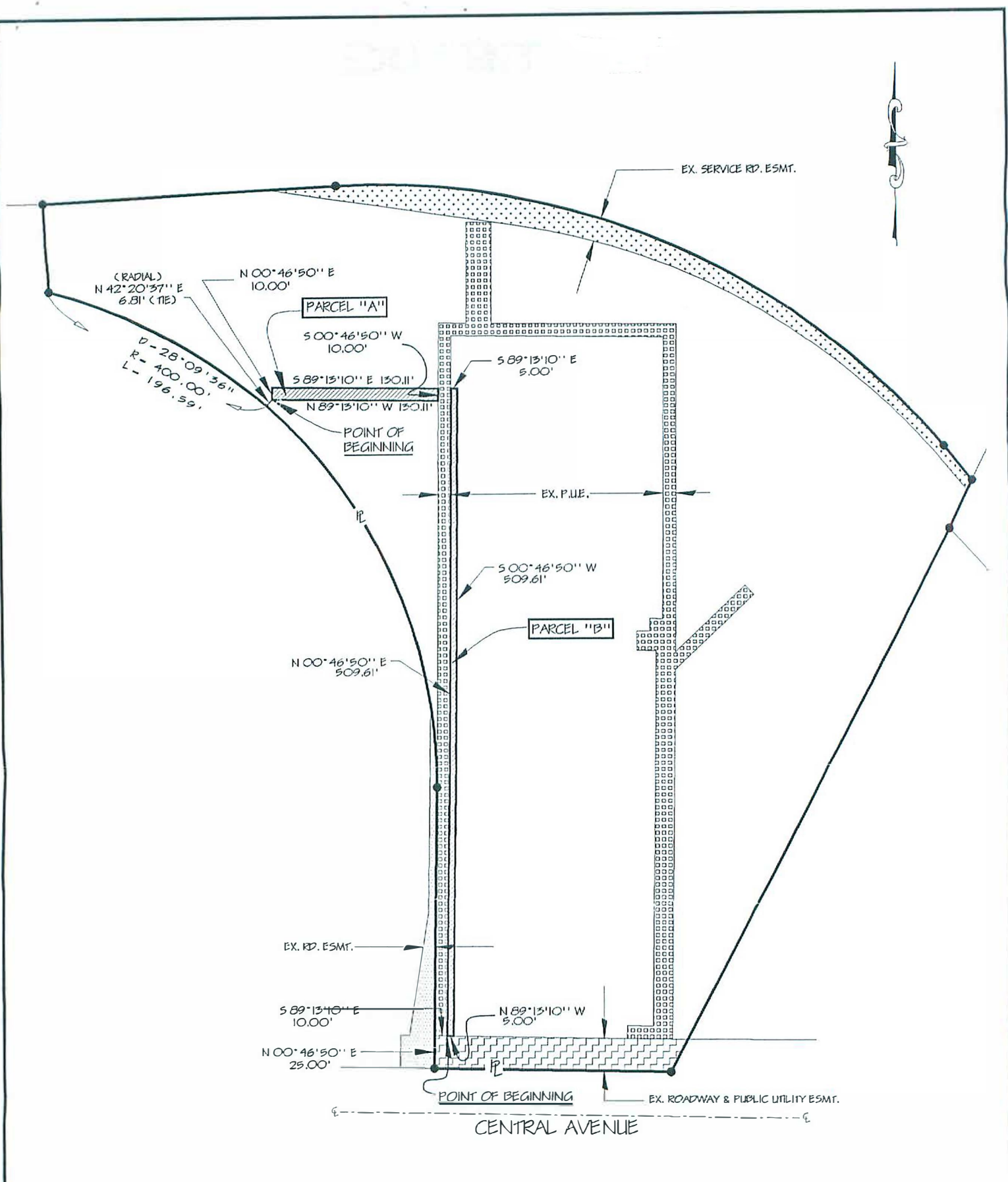


prepared by:

J.B. DIXON ENGINEERING AND SURVEYING INC.

524-A NORTH 8TH STREET
LOMPOC, CA (805) 736-5523

January, 1991 Scale: 1"=100' 9012ESMT

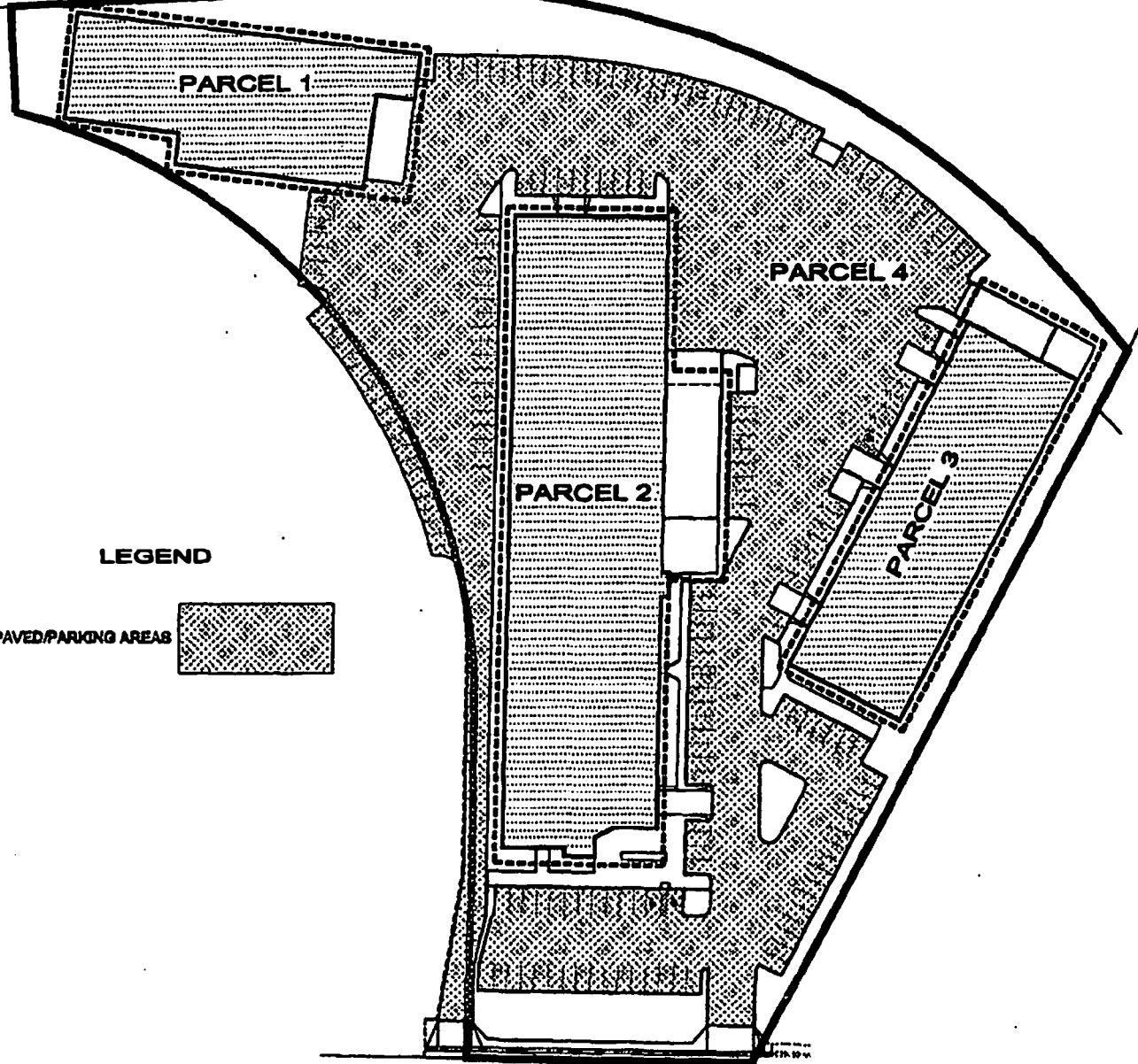


prepared by:

J.B. DIXON ENGINEERING AND SURVEYING INC.

524-A NORTH 8TH STREET
 LOMPOC, CA (805) 736-5523

September 11, 1997 (No Scale) 9706ESMT



LEGEND

PAVED/PARKING AREAS 

—●— CENTRAL AVENUE —●—



LOM 499-P SITE EXHIBIT

J.B. DIXON ENGINEERING & SURVEYING, INC.



**324-A NORTH 8TH STREET
LOMPOC, CA. 93436**

TEL. (805) 736-4513

FAX. (805) 736-0184

NO SCALE

DATE: 10-18-2001

9899PAC1