

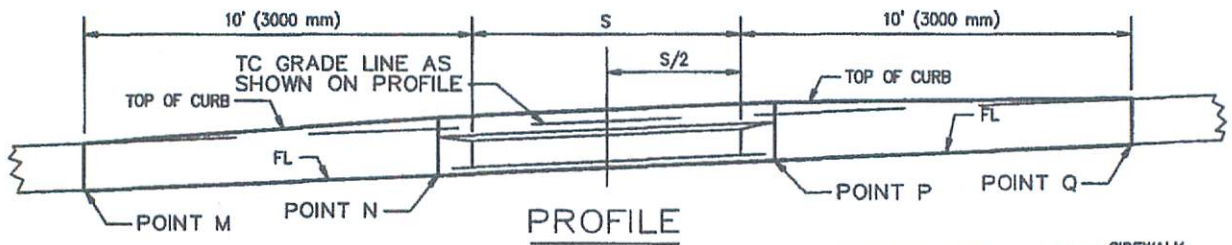
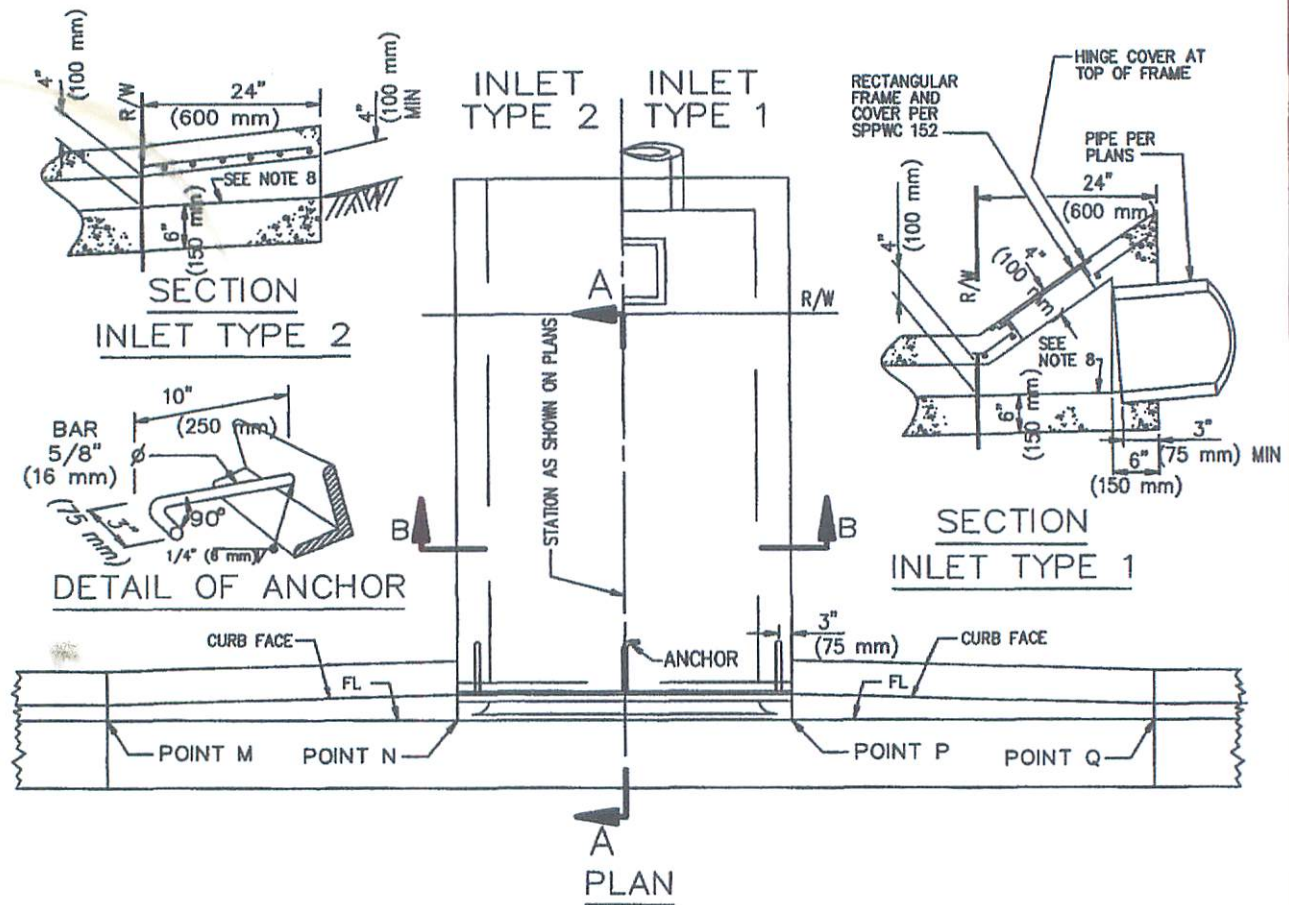


Received @ 2/27/2019  
PC Meeting  
from Rob Lewis









S, INCHES (mm)	J BAR SPACING
12" (300)	7" (240)
18" (450)	7" (240)
24" (600)	7" (240)
30" (750)	7" (240)
36" (900)	7" (240)
42" (1050)	6" (210)
48" (1200)	5" (180)
54" (1350)	6-1/2" (225)
60" (1500)	5" (180)
66" (1650)	4" (180)
72" (1800)	3-1/2" (120)

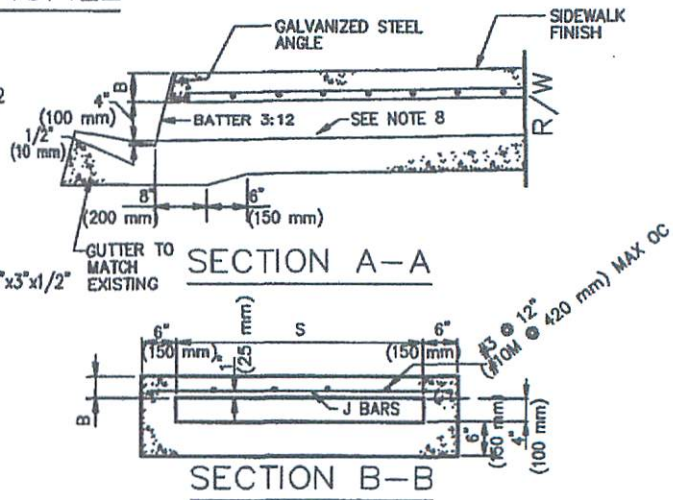
FOR S = 30" (750 mm) AND LESS, USE 2 ANCHORS. OTHERWISE, USE 3 ANCHORS.

FOR S = 48" (1200 mm) AND LESS, B = 3" (75 mm)

USE 2-1/2"x2"x3/8" (64x51x9.5) GALVANIZED STEEL ANGLE.

OTHERWISE, B = 4" (100 mm). USE 3-1/2"x3"x1/2" (89x76x12.7) GALVANIZED STEEL ANGLE.

J BARS ARE #3 (#10M).



NOTES

1. FLOOR OF BOX SHALL BE TROWELED SMOOTH.
2. IF THE TOE OF SLOPE IS ALLOWED WITHIN THE R/W, INLET TYPE 1 BEGINS AT THE TOE RATHER THAN AT THE R/W LINE.
3. FOR OPEN DITCH (TYPE 2), THE 24" (600 mm) EXTENSION BEYOND THE R/W LINE IS NOT REQUIRED WHEN BACK OF WALK IS 24" (600 mm) OR MORE FROM THE R/W LINE; HOWEVER, THE PIPE SHALL EXTEND TO THE R/W LINE IN ANY EVENT.
4. TOP OF INLET STRUCTURE (TYPE 1 & 2) SHALL BE FLUSH WITH ADJACENT SURFACE WHERE PRACTICAL.
5. A HEADED STEEL STUD 5/8" x 6-3/8" WITH A 1" HEAD (16 x 160 mm, 25 mm HEAD) ATTACHED BY A FULL PENETRATION BUTT WELD MAY BE USED AS AN ALTERNATE ANCHOR.
6. NORMAL CURB FACE AT POINT M AND Q. CURB FACE IS B + 5" (125 mm) AT POINT N AND P.
7. THE 3" (75 mm) LEG OF THE 5/8" (16 mm) DIA ANCHORS SHALL BE PARALLEL TO THE TOP OF SIDEWALK.
8. SLOPE = 2.0%.

STANDARD PLANS FOR PUBLIC WORKS CONSTRUCTION

**PARKWAY DRAIN**

STANDARD PLAN

**151-2**

SHEET 2 OF 2