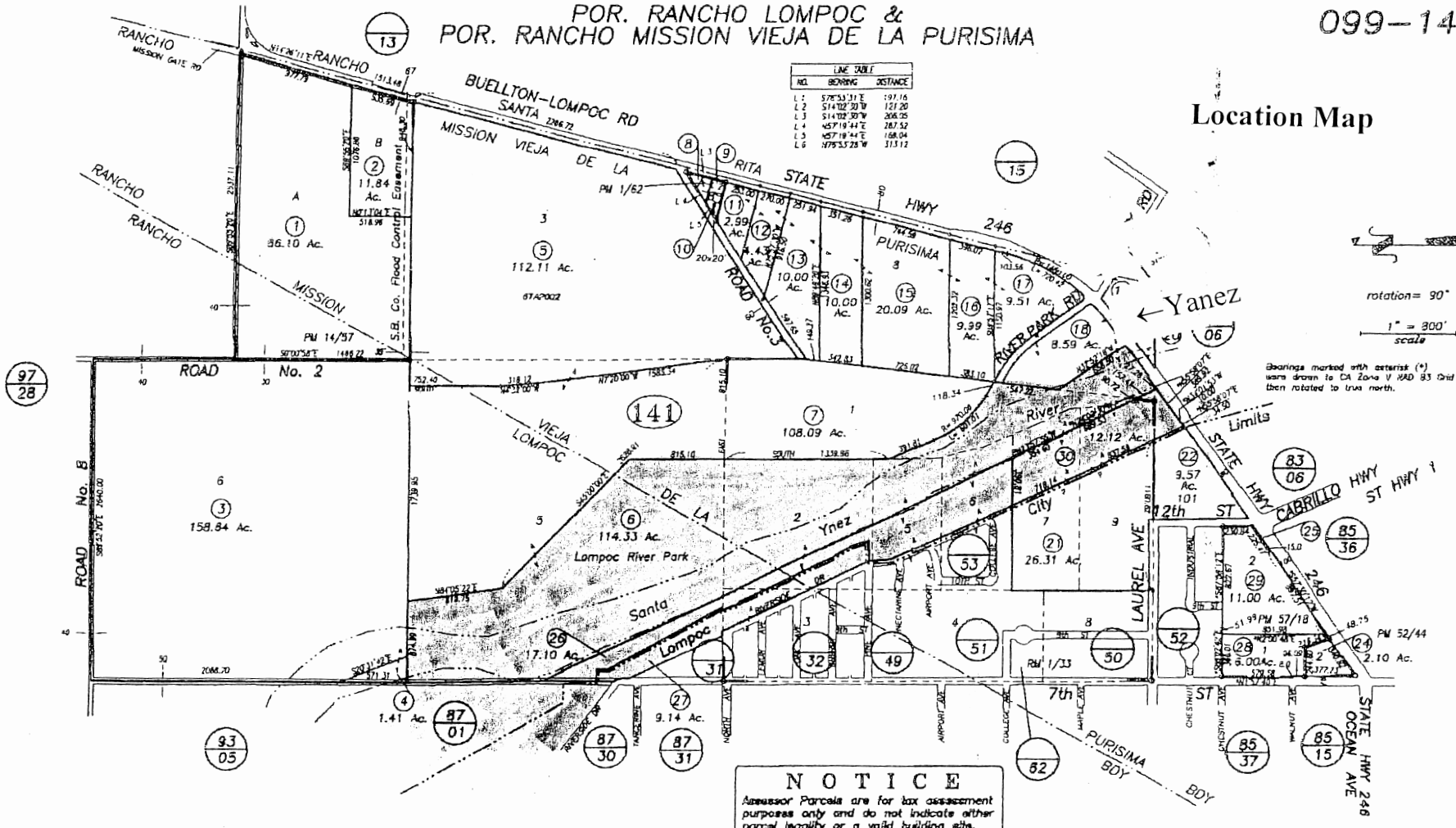


Location Map

LINE TABLE		
NO.	BEARING	DISTANCE
L1	S78°53'31"E	197.16
L2	S74°02'30"W	121.20
L3	S74°02'30"W	208.25
L4	S57°19'44"E	287.32
L5	S57°19'44"E	158.04
L6	S78°53'28"W	313.12



**NOTICE**  
 Assessor Parcels are for tax assessment purposes only and do not indicate either parcel legality or a valid building site.

11/26/1894 R.M. Bk. 1 , Pg. 33  
 10/06/1877 R.M. Bk. 1 , Pg. 45

, Tract "Riverside Addition to Lompoc"  
 , Tract "Subdivisions of Por. Ro Lompoc & La Mission Vieja De La Purisima"

City & Vicinity of Lompoc  
 Assessor's Map Bk, 099-Pg, 14  
 County of Santa Barbara, Calif.

LG/08 Annex 22 into city

Assessor's Plat Map

**Conceptual RV Campground Plot**

