

CITY of LOMPOC

2030 General Plan

PUBLIC SERVICES ELEMENT

INTRODUCTION AND AUTHORITY

The Public Services Element is an optional element that addresses municipal services in Lompoc. Numerous cities and counties have recognized the importance of planning for capital improvements and public facilities by adopting a separate capital improvements or public facilities element. Capital improvements such as roads, drainage facilities, sewer and water lines, treatment plants, and technological infrastructure are the framework that supports existing and planned development. Their availability plays an important part in determining the pattern of land uses within the community, as well as the direction and intensity of growth. Public facilities such as police and fire stations, city or county offices, libraries, and parks are important to residents' safety as well as their quality of life. The practical ability to provide these facilities is important to the well-being of the community.

The purpose of the Public Services Element is to establish goals, policies and implementing measures that ensure the provision of basic service and infrastructural needs in order for Lompoc to operate effectively and efficiently as a City.

Issues covered in the Public Services Element include:

- ❖ Municipal Services
- ❖ Educational Services
- ❖ Water Service & Infrastructure
- ❖ Wastewater Service & Infrastructure
- ❖ Storm Drains
- ❖ Technological Infrastructure

Public Services

The City of Lompoc is a full service city and provides its own services including fire protection, police, school, library and hospital services.

- ❖ Fire protection services in the City of Lompoc are provided by the Lompoc Fire Department. The Department operates two fire stations with a First-Unit Response Time of five (5) minutes.

PUBLIC SERVICES ELEMENT

- ❖ Law enforcement services within the City of Lompoc are provided by the Lompoc Police Department, located at 107 Civic Center Plaza. The Department has its own dispatch center and handles emergency (i.e., 911) telephone calls, non-emergency telephone calls, and dispatches police, fire, and ambulance service.
- ❖ The Lompoc Unified School District (LUSD) provides educational facilities to the entire Lompoc Valley. Within the City of Lompoc, the LUSD maintains six (6) elementary schools (kindergarten through fifth grade), one middle school (sixth through eighth grades) and one (1) high school (ninth through twelfth grade).
- ❖ Public library service in the City of Lompoc is provided by the Lompoc Public Library, located at 501 E. North Avenue.
- ❖ Hospital services within the City of Lompoc are provided by the Lompoc Valley Medical Center (formerly the Lompoc Healthcare District), located at 1515 East Ocean Avenue and the convalescent care facility.

Figure PS-1 shows the locations of these public services within the City of Lompoc.

Water, Wastewater, Stormwater and Solid Waste

The City of Lompoc manages and maintains all water, wastewater, stormwater and solid waste for all residents and businesses within the City.

Water

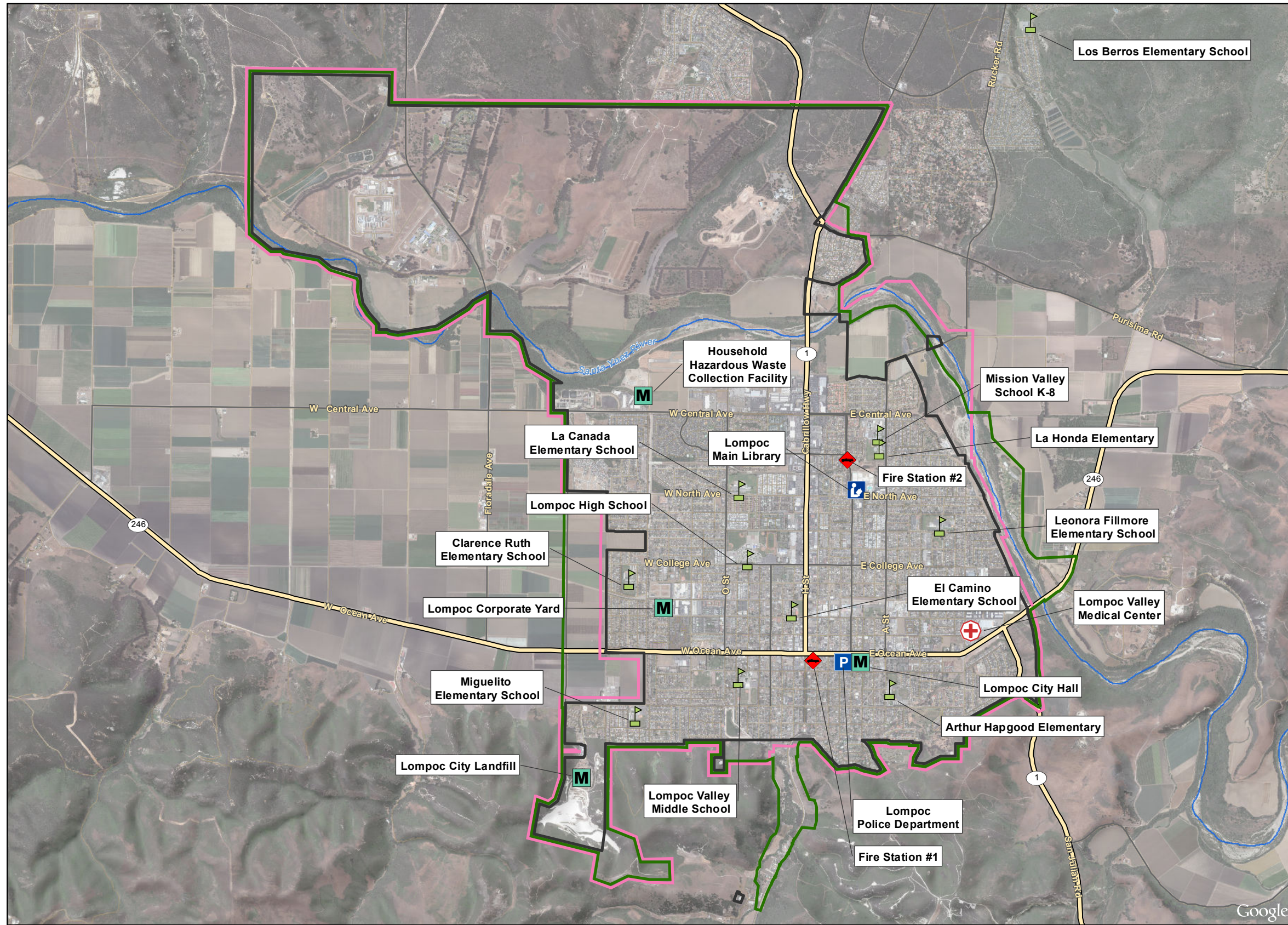
Water from the Lompoc Plain Basin is pumped from eleven wells located throughout the City. This basin is fed by Santa Ynez River water, irrigation return flow, and deep percolation of rainfall. The City has approximately 9,600 domestic water service connections. Water from the wells is conveyed to the Lompoc Water Treatment Plant (LWTP) located at 601 East North Avenue. The City serves existing residences in the Miguelito Canyon area with water from Frick Springs (located on San Miguelito Road, approximately 4.5 miles south of Willow Avenue) and the city water system.

Wastewater

The City of Lompoc owns and operates the Lompoc Regional Wastewater Reclamation Plant (LRWRP), located at 1801 East Central Avenue. The LRWRP utilizes advanced secondary treatment technology and has recently updated to a tertiary treatment system. The tertiary treatment system is a process subsequent to secondary treatment that results in an additional stage of wastewater treatment.

Stormwater

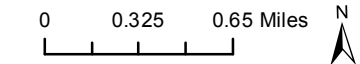
Lompoc's stormwater infrastructure consists of channelized drainages, detention basins, standard storm drain inlets and sub-surface storm drainage systems, and curbs and gutters. Both the City and County maintain stormwater infrastructure within the City of Lompoc. The City of Lompoc maintains the East-West Channel drainage and the City's curbs and gutters. The County maintains all the V Street Channel. Most stormwater flows are directed, to detention basins prior to entering the sub-surface drainages to avoid sediment loading. Stormwater ultimately flows into the subsurface drainages, which then flow to either the East-West Channel, the V Street Channel, or directly into the Santa Ynez River.



- Legend**
- City Limits
 - City Urban Limit Line
 - City Sphere of Influence
- Public Service Facility Type**
- M Municipal
 - + Hospital
 - ▾ School
 - L Library
 - P Police Station
 - ◆ Fire Station

Location of Public Service Facilities

Imagery provided by Google and its licensors © 2014.
City limit layers by City of Lompoc, 2014.



PUBLIC SERVICES ELEMENT

Solid Waste

The City of Lompoc provides all weekly garbage and recycling collection services in the City and owns and operates the City of Lompoc Sanitary Landfill, which is a Class III (non-hazardous) landfill. Services provided include automated refuse, recycling and green waste collection. Single-family residences and business customers are offered a three-container system: trash, comingled recycling, and green waste recycling.

GOALS AND POLICIES

Municipal Services and Facilities

Goal 1

Provide safe, attractive, and efficiently designed facilities to serve public needs.

Policies

- Policy 1.1 The City shall continue to prepare a five-year Capital Improvements Program for public buildings and facilities.
- Policy 1.2 The City shall ensure that all public buildings and facilities meet the access needs of physically-challenged individuals.
- Policy 1.3 The City shall collect development fees at a sufficient level to finance those public building and facility needs created and/or contributed by new development.

Goal 2

Ensure a high level of public safety to the community.

Policies

- Policy 2.1 The Police Department shall seek to maintain a three-minute average response time for all emergency service calls within the City limits.
- Policy 2.2 The Police Department shall undertake special efforts to deal with high crime rates in key areas, including commercial, industrial, and higher density residential areas.
- Policy 2.3 The Police Department shall coordinate with other law enforcement agencies to assure communication and shall participate in mutual aid agreements to provide personnel and resources when required.
- Policy 2.4 The Police Department shall foster and maintain a partnership with the community and deliver its services in a community-based manner.
- Policy 2.5 The Police Department will work with citizens and community organizations to develop crime prevention programs addressing issues such as substance abuse and illegal gang-related activities.

PUBLIC SERVICES ELEMENT

- Policy 2.6 The Police Department shall review development projects for prevention of crime, vandalism, and traffic problems.

Goal 3

Minimize loss of life, and property damage and reduce injuries due to fires, medical emergencies and other life threatening events.

Policies

- Policy 3.1 The first fire department response units capable of initiating effective incident intervention shall arrive at a priority emergency within six minutes 20 seconds from receipt of the call at the dispatch center, 90 percent of the time.
- Policy 3.2 For moderate risk incidents, the Lompoc Fire Department shall assemble an Effective Response Force (ERF) consisting of personnel sufficient to effectively mitigate the incident based on risk within 14 minutes from receipt of the call at the dispatch center, 90 percent of the time.
- Policy 3.3 The City shall continue to participate in an automatic aid agreement with Santa Barbara County and in mutual aid agreements with Vandenberg Air Force Base and the State of California.
- Policy 3.4 The City shall provide emergency medical response, including advanced and basic life support, as defined by Title - 22 California Code of Regulations (CCR) and Santa Barbara County Department of Health Care Services.
- Policy 3.5 The City shall encourage public education regarding fire prevention, safety and first aid medical procedures.
- Policy 3.6 The City shall continue to participate in an automatic aid agreement with Santa Barbara County and in mutual aid agreements with Vandenberg Air Force Base and the State of California.
- Policy 3.7 The Fire Department shall review all development projects for fire safety requirements.

Goal 4

Provide high quality library facilities and services.

Policies

- Policy 4.1 The City shall assist the Library Board of Trustees in making improvements to the City of Lompoc library and expansion of the facilities to maintain the system's quality and capacity.
- Policy 4.2 The City shall assist the Library Board of Trustees in providing sufficient capacity in the City of Lompoc library prior to approval of new development projects.

PUBLIC SERVICES ELEMENT

- Policy 4.3 The City shall cooperate with the Library Board of Trustees to ensure that improvements to the City of Lompoc library necessitated by new development within the City are proportionately financed by the project sponsor through development impact fees.
- Policy 4.4 The City shall continue to assist the Library Board of Trustees in upgrading and maintaining an updated, relevant collection of materials, electronic resources and technologies.
- Policy 4.5 The City shall continue to work with the County of Santa Barbara and the Library Board of Trustees in providing regional library facilities and services which serve all segments of the population.
- Policy 4.6 The City shall cooperate with the Library Board of Trustees to seek and maintain dedicated financial support for the Library and its programs.

Goal 5

Provide an economical and environmentally-safe solid waste collection and disposal system.

Policies

- Policy 5.1 The City shall continue to provide a solid waste collection system which meets the needs of the community.
- Policy 5.2 The City shall assure that sufficient capacity is available in the landfill prior to approval of new development projects.
- Policy 5.3 The City shall assure that all improvements to the solid waste collection and disposal system necessitated by new development are proportionately financed by the project sponsor.
- Policy 5.4 The City shall establish user fees for the landfill which adequately fund costs to operate the landfill and prepare the landfill for eventual closure.

Goal 6

Maximize the life of the landfill.

Policies

- Policy 6.1 The City shall continue to encourage efforts to reduce, recycle, and compost as many materials as possible.
- Policy 6.2 The City shall strive to meet State goals to reduce waste entering the landfill.
- Policy 6.3 The City shall prioritize waste reduction techniques as the preferred method to maximize the life of the landfill. If waste reduction techniques are insufficient, the City may investigate options for expansion of the landfill capacity, while ensuring a buffer to adjacent land uses

PUBLIC SERVICES ELEMENT

Goal 7

Provide a clean and litter-free community.

Policies

- Policy 7.1 The City shall continue to provide a modern collection system to reduce litter to the maximum extent possible.
- Policy 7.2 The City shall encourage the creation and implementation of anti-litter educational programs.

Educational Services

Goal 8

Ensure the provision of adequate and high quality public educational facilities.

Policies

- Policy 8.1 The City shall require payment of fees to mitigate impacts upon school facilities from new development within the City.
- Policy 8.2 The City shall cooperate with Lompoc Unified School District to obtain funds from other sources to provide high quality public educational facilities.
- Policy 8.3 The City shall encourage Lompoc Unified School District and Allan Hancock Joint Community College District to maintain consistency with the City's architectural, sidewalk, landscaping, and site design requirements in the design, remodeling, or construction of new facilities.
- Policy 8.4 The City shall assist the Lompoc Unified School District to identify suitable future uses for any school sites determined to be no longer suitable by the District.

Water Service and Infrastructure

Goal 9

Provide economical and dependable water service.

Policies

- Policy 9.1 The City shall provide funding and make sustainable improvements to the water supply system to maintain system capability and reliability.
- Policy 9.2 The City shall assure that sufficient capacity and quality is available in the Lompoc Water Treatment Plant and system prior to approval of new development projects.

PUBLIC SERVICES ELEMENT

- Policy 9.3 The City shall assure that all improvements to the water supply system necessitated by the approval of new projects are proportionately financed by the project sponsor.

Goal 10

Maximize the conservation of water.

Policies

- Policy 10.1 The City shall promote the conservation of water by all customers.
- Policy 10.2 The City shall investigate, where feasible, financially viable uses of recycled water for appropriate applications including outdoor irrigation, toilet flushing, upstream percolation, and commercial and industrial processes.

Goal 11

Protect and improve water quality in the Lompoc Groundwater Basin.

Policies

- Policy 11.1 The City shall continue to require public and private wastewater dischargers to connect to the City's waste water treatment system in order to minimize contamination of the Lompoc Groundwater Basin.
- Policy 11.2 The City shall require that all new development be connected to a City-approved wastewater system.
- Policy 11.3 The City shall incorporate water holding areas such as creekbeds, recessed athletic fields, ponds, cisterns, and other features that serve to recharge groundwater, reduce runoff, improve water quality and decrease flooding into the urban landscape.
- Policy 11.4 The City shall identify and protect groundwater recharge areas to maintain suitable groundwater levels and to protect groundwater quality for existing and potential municipal water sources.
- Policy 11.5 All land development shall include a Storm Water Pollution Prevention Plan in accordance with the federal Clean Water Act and current rules and procedures prescribed by the Regional Water Quality Control Board. Low Impact Development (LID) measures shall be incorporated into project design where feasible.

Wastewater Service and Infrastructure

Goal 12

Provide economical and dependable sewer service and treatment.

PUBLIC SERVICES ELEMENT

Policies

- Policy 12.1 The City shall provide funding and make sustainable improvements to the sewer system to maintain system capability and reliability in accordance with applicable regulations
- Policy 12.2 The City shall assure that sufficient capacity is available in the Lompoc Regional Wastewater Reclamation Plant prior to approval of new development projects.
- Policy 12.3 The City shall assure that all improvements to the sewer system necessitated by the approval of new projects are proportionately financed by the project sponsor.
- Policy 12.4 The City shall promote beneficial uses of wastewater biosolids and effluent that are financially viable.

Storm Drains

Goal 13

Provide storm drains which minimize street flooding.

Policies

- Policy 13.1 The City shall ensure the storm drain system has adequate capacity to minimize street flooding from the design standard storm, and where feasible, shall expand the capacity of the system to control storm flows.
- Policy 13.2 The City shall require new developments to: minimize the amount of off-site drainage by retaining stormwater for on-site percolation, provide adequate drainage facilities for remaining off-site flows, maintain natural drainage channels, and avoid alteration of off-site drainage courses.

Technological Infrastructure

Goal 14

Encourage development of technology infrastructure and service to allow Lompoc residents and businesses to efficiently communicate with individuals and institutions locally, regionally, nationally, and globally.

Policies

- Policy 14.1 The City shall continue to develop a citywide area network that provides broadband connections to local public facilities and connects to regional networks.
- Policy 14.2 The City shall encourage technology and communication service providers to develop and maintain a long-term coordinated telecommunications plan to improve bandwidth, reduce costs, and improve system reliability with minimal aesthetic impacts.
- Policy 14.3 The City shall require new residential and commercial development to include infrastructure components necessary to support modern communication technologies.

PUBLIC SERVICES ELEMENT

Goal 15

Provide economical and dependable electrical service.

Policies

- Policy 15.1 The City shall make improvements to the City electrical system to maintain system capability, reliability, and affordability.
- Policy 15.2 The City shall assure that the electrical system has sufficient available capacity prior to approval of new development projects.
- Policy 15.3 The City shall assure that all improvements to the City electrical system necessitated by new development projects are proportionately financed by the project sponsor.

Goal 16

Provide attractive streets and neighborhoods by undergrounding new utility distribution lines.

Policies

- Policy 16.1 The City shall require undergrounding of new utility distribution lines in association with new developments.
- Policy 16.2 The City shall ensure that routes and facilities for pipelines and utility transmission lines are compatible with surrounding existing and planned land uses.

Goal 17

Maximize the conservation of electrical energy resources.

Policies

- Policy 17.1 The City shall encourage the use of solar energy, in accordance /Public Utilities Code Section 2827, in the orientation and design of all new public and private development projects.
- Policy 17.2 The City shall continue to identify energy efficiency improvement measures, undertake all necessary steps to seek funding for their implementation and, upon securing availability of funds, implement the measures in a timely manner.
- Policy 17.3 The City shall cooperate with Federal, State and local governments and other appropriate entities to accomplish energy conservation objectives throughout the state, and inform employees, its contractors, staff and the general public of the need for and methods of energy conservation.
- Policy 17.4 The City shall promote energy conservation and encourage the use of sustainable energy sources and technologies while promoting the economic benefits of conservation.

PUBLIC SERVICES ELEMENT

IMPLEMENTATION MEASURES

- Measure 1 The City shall implement an updated master plan for the Lompoc Airport. [Policy 1.1]
- Measure 2 The City shall schedule improvements to public buildings, including restrooms necessary to meet the needs of physically-challenged individuals, in accordance with the requirements of the Americans with Disabilities Act. [Policy 1.1, 1.2 and 1.3]
- Measure 3 The City shall gather information from other cities regarding the display and financing of public art. [Goal 1]
- Measure 4 The Police Department shall develop and implement traffic safety recommendations and programs based upon State-wide Integrated Traffic Reporting System data, and citizen and school district requests. [Policies 2.3, 2.4, 2.5, 3.1, and 3.2]
- Measure 5 The Police Department shall utilize a community oriented policing philosophy involving citizens, community organizations, city departments, and criminal justice agencies. Issues such as crime, drug or gang-related activities, and other identified problems relating to public safety will be targeted by this philosophy. [Policies 2.4, 3.1 and 3.2]
- Measure 6 The City shall amend the City Code to require installation of automatic fire protection systems in all new buildings that exceed fire protection statutory square footage and on-scene response capabilities of the Fire Department. [Policy 3.5]
- Measure 7 The City shall continue to review state and local code regulations for fire protection requirements. [Policy 3.5]
- Measure 8 The City shall assist the Library Board of Trustees in preparing a facility plan for the main library, which includes consideration of an additional entrance to the existing parking area. [Policy 4.1 and 4.2]
- Measure 9 The City will strive to increase funding levels for the library to meet the average funding levels for City of Lompoc library facilities on a statewide basis. [Policy 4.4 and 4.6]
- Measure 10 The City shall continue to collect Development Impact Fees to fund improvements to the City of Lompoc library system which are necessitated by new development. [Policy 4.3]
- Measure 11 The City shall investigate clean alternative fuel sources for garbage, bus, and recycling truck fleets. [Policy 5.1]
- Measure 12 The City shall explore how to support and expand material exchanges and reuse programs. [Policy 6.1 and 6.3]
- Measure 13 The City shall provide outreach and education about recycling and composting to residents and businesses. [Policy 6.1]
- Measure 14 The City shall ensure enough waste and recycling receptacles are located within the City to minimize the opportunities to litter. [Policy 7.1]
- Measure 15 The City shall partner with local business to keep outdoor areas litter-free. [Policy 7.2]

PUBLIC SERVICES ELEMENT

- Measure 16 The Zoning Ordinance shall be amended to require that public notice be given to all property owners within 1,000 feet of the landfill boundary for any development permits requested for the landfill. [Policy 8.3]
- Measure 17 The City shall amend the Subdivision Ordinance to require that land divisions approved within 2,000 feet of the landfill boundary shall be conditioned to require a notification in the deed of the landfill's proximity to the property. [Policy 8.3]
- Measure 18 The City shall investigate the acquisition of properties or easements to ensure that adequate buffer zones to mitigate the environmental effects of landfill operations. [Policy 8.3]
- Measure 19 The City shall ensure that a 200 foot buffer, and a visual buffer, is maintained between the active working areas of the landfill and all adjacent land uses. [Policy 8.3]
- Measure 20 The City shall seek to negotiate comprehensive joint use agreements with the Lompoc Unified School District and the Allan Hancock Joint Community College District. [Policy 8.3]
- Measure 21 The City shall notify the Lompoc Unified School District when the City receives a development application for an area identified with a proposed school designation to determine whether there is property acquisition interest. If no interest is expressed, the City shall delete the proposed school site designation from the Land Use Element Map following the issuance of applicable certificates of occupancy. [Policy 8.1 and 8.4]
- Measure 22 The City shall continue the emergency inter-tie agreements with Mission Hills CSD and explore an intertie with Vandenberg Village CSD and Vandenberg Air Force Base, in case of emergency water shortages. Such agreements would be invoked to satisfy short-term emergency water needs of either party. [Policy 9.1]
- Measure 23 The City shall work with appropriate agencies to minimize water quality impacts from new development and other activities in the watersheds of the City's water supplies. [Policy 9.2]
- Measure 24 The City shall investigate and implement, if feasible, basin recharge programs through non-traditional methods. Such programs may include the following: storm drainage system design integrating Low-Impact Development (LID) features to reduce hydromodification from development and other improvements to recharge the ground water aquifer; developing/improving water recharge along historic drainage patterns along/adjacent to creeks and/or rivers; and/or developing recycled water irrigation programs including basin recharge. [Policy 9.1]
- Measure 25 The City shall promote water conservation technologies such as low-flow showerheads and toilets, efficient clothes washers, irrigation controllers, and more efficient water-using industrial equipment should be incorporated in all new construction and retrofitted in remodeled buildings. [Policy 10.1]

PUBLIC SERVICES ELEMENT

- Measure 26 The City shall establish programs, where feasible, to promote financially viable uses of wastewater biosolids. Potential uses include:
- Composting; and
 - Application to land areas by spreading, spraying or injection. [Policies 12.1 and 12.4]
- Measure 27 The City shall establish programs, where feasible, to promote financially viable uses of reclaimed effluent. [Policy 12.4] Potential uses include:
- Irrigation of landscaping and fodder, seed, and flower crops;
 - Industrial cooling;
 - Dust control and compaction at construction sites and the landfill;
 - Recharge of the groundwater basin; and
 - Agricultural use in non contact food crops
- Measure 28 The City shall update the Storm Drainage Master Plan. [Policy 13.1]
- Measure 29 The City shall consider amendment of the Development Impact Fees Ordinance as a funding source for storm drain infrastructure. [Policy 13.1]
- Measure 30 The City shall encourage citywide access to fast and secure wireless broadband networks. [Policy 14.1 and 14.2]
- Measure 31 The City shall encourage technology service providers to creatively integrate technology facilities into the natural and built environment to minimize the total number of such facilities and associated aesthetic impacts. [Policy 14.2 and 14.3]
- Measure 32 The City shall periodically review the long-range needs of the electrical system including the following issues:
- Desired level of reliability for the electrical system. [Policies 15.1 and 15.2]
 - Maintenance of power lines and related equipment. [Policy 15.1 and 15.2]
 - Procurement of adequate sources of electrical power. [Policies 15.1 and 15.2]
 - Maintenance of an accurate electrical system map. [Policies 15.1 and 15.2]
 - Provision for the logical and economic extension of the electrical system to new developments. [Policies 15.2 and 15.3]
 - Location of a financially viable large solar project within the city limits.