

CITY of LOMPOC

2030 General Plan

PARKS AND RECREATION ELEMENT

INTRODUCTION AND AUTHORITY

The Parks and Recreation Element is an optional element that addresses community parks and the recreational needs of Lompoc. Although optional, about one-third of the cities and 40 percent of the counties in California have adopted a parks and recreation element, according to the Office of Planning & Research (OPR) 1996 local government planning survey. This number illustrates the importance placed upon parks and recreation facilities by local jurisdictions. Public parks, clean and safe recreation facilities and the opportunity for passive and active recreation are important contributors to a community's quality of life.

The purpose of the Parks and Recreation Element is to establish goals, policies and implementing measures that ensure the recreational needs of Lompoc are met by providing convenient, attractive, diverse and well maintained park and recreational facilities. By defining existing needs and resources and forecasting future needs and resources, the City can develop and implement realistic policies for the long-term provision of park facilities. The Parks and Recreation Element fulfills the requirements of Government Code Section 65302(a) and provides a framework for the City of Lompoc to assess the effectiveness of current and future parks, recreation facilities and recreation programs with the needs of all residents. Parks are maintained by the Public Works Department Parks and Urban Forestry Division. Recreational facilities and programs are operated and maintained by Economic/Community Development Department Recreation Division staff. The Departments/Divisions work in concert to provide the recreational programs to the members of the community.

The City currently owns and operates several public parks and recreation facilities. Although the City owns and operates these parks, some of this parkland is located outside of but immediately adjacent to the existing City Limits. Figure PR-1 shows the location of all City owned parks, within and outside City Limits. The parklands outside City Limits include River Park, Riverbend Park the Riverbend Multi-purpose Trail property. The City also provides a variety of recreation facilities and services such as aquatics activities, sports leagues, education classes, cultural events, entertainment experiences, and other leisure activities for the community.

Many recreational facilities and parklands are available to Lompoc residents, in the Lompoc Valley, that are not operated by the City of Lompoc. These public parks include, but are not limited to: Jalama Beach County Park, Ocean Beach County Park, Miguelito County Park, and La Purisima Mission State Historic Park, and Burton Mesa Chaparral. Other recreational areas include the La Purisima Golf Course, Marshallia Golf Course, Vandenberg Village Country Club, and multiple homeowner association-operated play areas, sports fields, and pools throughout the surrounding area. The Lompoc Unified School District also has several facilities that may be available to City residents.

PARKS AND RECREATION ELEMENT

GOALS AND POLICIES

Goal 1

Provide parkland and recreational facilities which are convenient to all neighborhoods and meet the needs of a diverse population.

Policies

- Policy 1.1 The City shall provide park facilities which respond to the needs of a diverse population at a minimum of 5 acres per 1,000 persons.
- Policy 1.2 The City shall provide adequate park sites throughout the City to serve existing residents and future growth.
- Policy 1.3 The City shall develop Neighborhood Parks in currently developed areas of the City (e.g. high density housing areas), where there is a shortage of parks.
- Policy 1.4 The City shall encourage establishment of off-road bicycling/hiking/equestrian trails extending to Santa Ynez River Park, La Purisima Mission, Burton Mesa Chaparral Preserve, Allan Hancock College, Ocean Beach Park, and along the Santa Ynez River.
- Policy 1.5 The City shall maximize opportunities for joint recreation use of public facilities and lands administered by other public agencies.
- Policy 1.6 The City shall encourage Santa Barbara County to improve and expand the parks in the Lompoc Valley and surrounding area, including Ocean Beach Park, Miguelito Park, and Jalama Beach Park.

Goal 2

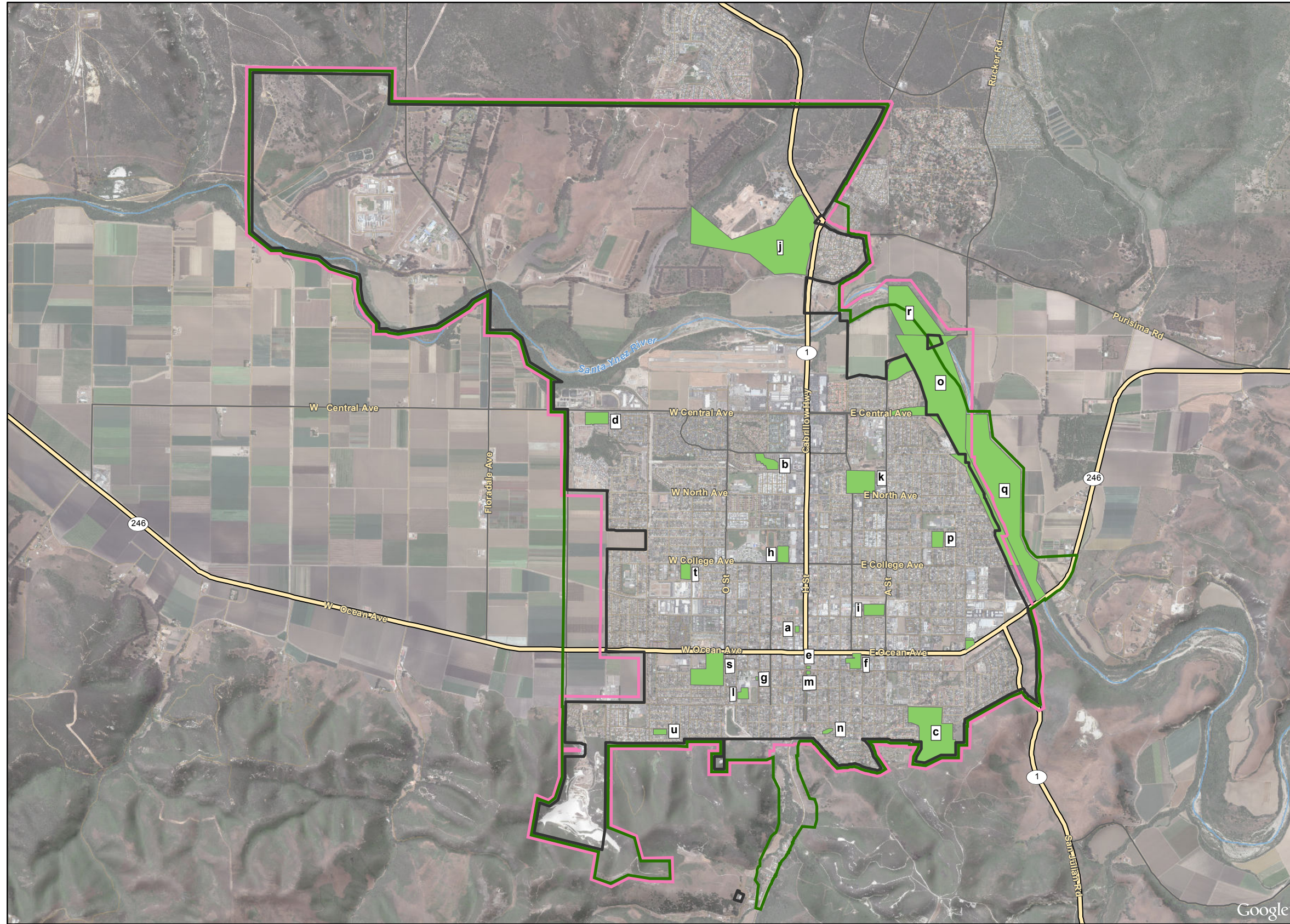
Provide a diversity of recreation programs and facilities to meet the needs of all citizens.

Policies

- Policy 2.1 The City shall continue and, where possible, expand recreation programs for children, teens, adults, seniors, and disabled persons.
- Policy 2.2 The City shall make lands or facilities owned by the City available to community and non-profit groups for activities that meet existing recreation needs and for voluntary participation on the part of community residents in the design, development, or ongoing maintenance activities at existing and future park and recreation sites.
- Policy 2.3 The City shall encourage collaborative efforts among private recreation groups (such as the Lompoc parks, recreation, and pool foundation and chamber of commerce) to develop and maintain multi-use park and recreation facilities which serve a wide range of users.

Goal 3

All park and recreation facilities shall be well designed, developed, and maintained, as well as serve to enhance the positive aspects of the neighborhood.

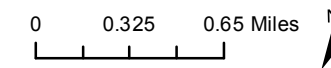


Legend

- City Limits
- City Urban Limit Line
- City Sphere of Influence
- Park and Rec. Facilities

Map ID	Name
a	Anderson Recreation Center
b	Barton Neighborhood Park / Barking Dog Park
c	Beattie Park
d	Briar Creek Park
e	Centennial Square
f	City Hall
g	Civic Auditorium
h	College Park / Skate Park
i	J.M. Park (John Mansville)
j	Ken Adams Park
k	Lompoc Library
l	Lompoc Valley Middle School
m	Museum
n	Old Mission Site
o	Riverbend Multi-Use Trail Property
p	Pioneer Park
q	River Park / RV Campground & Motorsports Park
r	Riverbend Park / Bike Skills Park
s	Ryon Memorial Park
t	Thompson Park
u	Westvale Park

Imagery provided by Google and its licensors © 2014.
City limit layers by City of Lompoc, 2014.



Existing Parks Owned
and Operated By the City

PARKS AND RECREATION ELEMENT

Policies

- Policy 3.1 The City shall encourage developments adjacent to parks or open space to provide direct access to, and common open space contiguous with, such areas.
- Policy 3.2 The City shall improve and rehabilitate existing parks as needed and as funds become available.
- Policy 3.3 The City shall develop a funding program that balances community need with available revenues, and pursue various private, local, state, and federal sources of funding for acquisition, development, and maintenance of park and recreation facilities.
- Policy 3.4 The City shall establish and maintain minimum staffing measures to ensure that City parks are maintained for public safety.

Goal 4

The costs of providing parks and recreation facilities and programs shall be equitably shared by new development and current users.

Policies

- Policy 4.1 The City shall require all residential, commercial, and industrial developments to contribute toward acquisition and/or improvement of parks and recreation facilities.
- Policy 4.2 The recreation fee based programs offered by the Recreation Division should be financially self-supporting.
- Policy 4.3 The City shall encourage the development of private commercial recreational facilities.
- Policy 4.4 Prior to accepting or developing a new park, the City shall determine the long-term maintenance and operating costs associated with the proposed project. The City shall not develop the park until adequate funds are available for maintenance.
- Policy 4.5 The City shall develop a long range plan for the expenditures of Quimby Act fees.

IMPLEMENTATION MEASURES

- Measure 1 The City will pursue acquisition and/or development of additional park and recreation sites as described in the attached Proposed Park and Recreation Sites list. The list shall be comprised of sites which help meet the current and projected deficiencies of various types of park and recreation facilities. Acquisition and/or development possibilities shall be periodically reviewed in order to direct staff to respond to new opportunities and changing community concerns. [Policies 1.1, 1.2, 1.3, 4.3 and 4.4]
- Measure 2 The Parks Division and the Recreation Division shall work together to prepare and maintain site plans and maintenance schedules for all park sites. Site plans shall include the identification of necessary capital improvements, landscaping, use areas and facilities. The site plans for the park system should also address the following: group camping,

PARKS AND RECREATION ELEMENT

- creekside systems, trails for pedestrians/joggers/bicyclists/disabled persons, floral display gardens, habitat restoration projects, community gardens, skateboarding, and other special use parks etc. [Policies 1.1]
- Measure 3 The City shall prepare and implement a Bike and Trails Master Plan for the City using flood control channels, easements, dedications, right-of-ways, open space, etc., in conjunction with other government and non-profit agencies. [Policies 1.1 and 1.4]
- Measure 4 The City Parks Division and Recreation Division shall work together to make improvements and additions to the existing park and recreation facilities as listed and prioritized in the Capital Improvement Plan (CIP). [Policies 1.1 and 3.3]
- Measure 5 The City shall amend the Subdivision Ordinance to assure that open space areas credited in the amenity formula for "Planned Developments" are usable for organized recreational purposes or meet minimum usable dimensions (i.e. 30 feet). [Policy 1.4]
- Measure 6 The City should negotiate comprehensive joint use agreements with the Lompoc Unified School District and the Allan Hancock Joint Community College District. [Policy 1.5]
- Measure 7 The City should investigate negotiating limited joint use agreements with the US Air Force, United States Penitentiary, and Federal Correctional Institution to allow increased use of their respective recreation facilities by organized sports leagues. [Policy 1.5]
- Measure 8 The City should investigate negotiating a limited joint-use agreement with the State Parks and Recreation Department for greater use of the La Purisima State Historical Park in conjunction with City recreation programs (e.g. summer or weekend day camps, arts and crafts classes, and special outings). [Policy 1.5]
- Measure 9 The City should investigate negotiating joint use agreements with private organizations to establish limited public access to their respective facilities in order to expand public recreation opportunities. [Policies 1.5, 2.2 and 4.4]
- Measure 10 The City shall encourage Santa Barbara County to provide resources for meeting the park and recreation program needs of all unincorporated area residents in the Lompoc Valley. [Policies 1.6 and 2.1]
- Measure 11 The Recreation Division should continue to provide recreation and social activities for all age groups and abilities including teens and seniors. [Policy 2.1]
- Measure 12 The City shall pursue funding sources to maintain a Recreation Scholarship Fund to receive and distribute funds from public and private sources to enable low-income children to participate in recreation programs. [Policy 2.1 and 4.4]
- Measure 13 City facilities and land may be rented or leased for recreation purposes, so long as such facilities will be available for public use when not being actively used for their rented or leased activity. [Policy 2.2]
- Measure 14 The Parks Division and Recreation Division shall integrate park and recreation facility planning with programs to enhance neighborhoods. [Policy 3.1]

PARKS AND RECREATION ELEMENT

- Measure 15 The Parks Division and Recreation Division should review all subdivision maps through the Development Review Board process. [Policy 3.1]
- Measure 16 The Parks and Recreation Commission shall establish, maintain, and annually evaluate a self-supporting user-fee schedule for recreation programs and facility rentals. [Policy 4.2]
- Measure 17 The City shall seek and/or provide funding for the construction of recreation trails as identified in the Bikeway Routes Map of the Circulation Element. [Policy 4.1]
- Measure 18 The City shall continue to explore the development of private commercial recreation facilities including, but not limited to a bowling alley, golf course, athletic facilities, and festival grounds. [Policy 4.3]
- Measure 19 The City shall explore the need for accessibility improvements at existing recreation facilities and within recreation programs in order to allocate funds as they become available to ensure compliance with ADA requirements including restrooms. [Policy 3.2]
- Measure 20 The City shall use methods within City Park facilities that reduce maintenance costs, such as the use of drought tolerant landscaping, recycled water, solar oriented structures, structures with natural lighting during daylight hours, and vandalism-resistant surfaces. [Policy 3.2]
- Measure 21 The City shall explore opportunities for joint venture development, as opportunities present, with other governmental organizations and resources as they become available. [Policies 2.1, 2.2, and 2.3]
- Measure 22 The City shall continue to support the implementation of non-profit foundationS that could assist with grant and special fund raising opportunities for Parks and/or Recreation facilities and programs. [Policies 2.1, 2.2, and 2.3]

**Table PR-1
Planned Park and Recreation Sites**

Site	APN	Location	Approx. Acreage	Proposed Facility Type*
1	93-070-39	600 North V Street	18	N
2	Various	West of A Street/McLaughlin Road	100	C
3	87-011-17	Southwest corner of Central Avenue & A Street	7	C
4	99-140-85, -86	Hwy. 246/River Park Road	18	R

*Note: N = Neighborhood Park
C = Community Park
R = Regional Park

PARKS AND RECREATION ELEMENT

Table PR-2 Existing Lompoc Park & Recreational Facilities			
Park Name	Approx. Acreage	Type	Amenities
Barton Neighborhood Park/Barking Dog Park	5.11	Neighborhood	Playground, benches, basketball court, walking path, and open turf play areas, access to the East-West Channel Bike Path and dog park
Beattie Park	49.90	Community	Playground, picnic area, basketball courts, horseshoe pits, fitness trail, athletic field, BBQs, urban forest preserve
Briar Creek Park	4	Community	Tot lot, restrooms, baseball field, open play area
Centennial Square	0.32	Neighborhood	Benches, gazebo, art gallery
City Hall/Floresta Park	2.50	Community	Benches, public art
College Park/Skate Park	4.56	Neighborhood	Skate park, YMCA location. Aquatic center includes competition pool, recreation pool with water features and water slides, therapeutic pool, and classroom
JM Park (Johns Manville)	5.16	Neighborhood	Playground, BBQs, 2 lighted baseball fields, basketball court
Ken Adam Park	42	Community	Playground, BBQs, nature trails, horseshoe and volleyball facilities
Pioneer Park	4.71	Neighborhood	Baseball and softball fields, tennis courts, athletic field, tot lot, BBQs, stage
River Park/RV Campground & Motosports Park	113.18	Regional	Playground, fitness trail, Kiwanis Lake, horseshoe pits, volleyball courts, campground, large group BBQs
Riverbend Park/Bike Skills Park	41.32	Regional	Baseball field, BBQs, batting cages, multi-use athletic fields, bike skills park
Riverbend Multi-use Trail	71.86	Regional	Multi-use bike and pedestrian trails
Ryon Park	19.62	Community	Baseball and softball fields, tennis courts, athletic field, tot lot, BBQs, stage
Thompson Park	4.34	Neighborhood	Playground, BBQs, softball field, benches, open turf
Westvale Park	1.96	Neighborhood	Playground, tot lot, benches, open turf areas
Anderson Recreation Center	0.25	Community	Multi-purpose room (gymnasium), several classrooms, kitchen
Dick Dewees Community and Senior Center	0.35	Community	Banquet room, multi-purpose room, classrooms, office space, kitchen, patio
Aquatic Center	0.71	Community	Competition pool, water slides and lap pool, therapy pool, aquaplay structure
Lompoc Library	1.79	Community	Library amenities, benches, public art
Museum	0.32	Community	Benches, public art
Old Mission Site	1.07	Community	Educational amenities
Lompoc Valley Middle School	2.5	Neighborhood	Playground, softball field, benches
Civic Auditorium	0.32	Community	430 seat auditorium and classroom