

**From the City of Lompoc Web Site
Created and Maintained by
City of Lompoc Information Services Division**

A very special thanks to the Lompoc Valley Historical Society and all the good folks for sharing their photo archives with us.

<http://www.ci.lompoc.ca.us/>

Life at Surf



Fishing at Surf Beach with a roll of string and a rifle.



Children playing on a dock in the lagoon at Ocean Park in the late 1940's.



A picture of the Rail Road Station out at Surf Beach looking northeast to south-west. It was built in 1900.



In this picture you can see some of the summer cabins that were available at Ocean Park. This picture is dated in the early 40's.



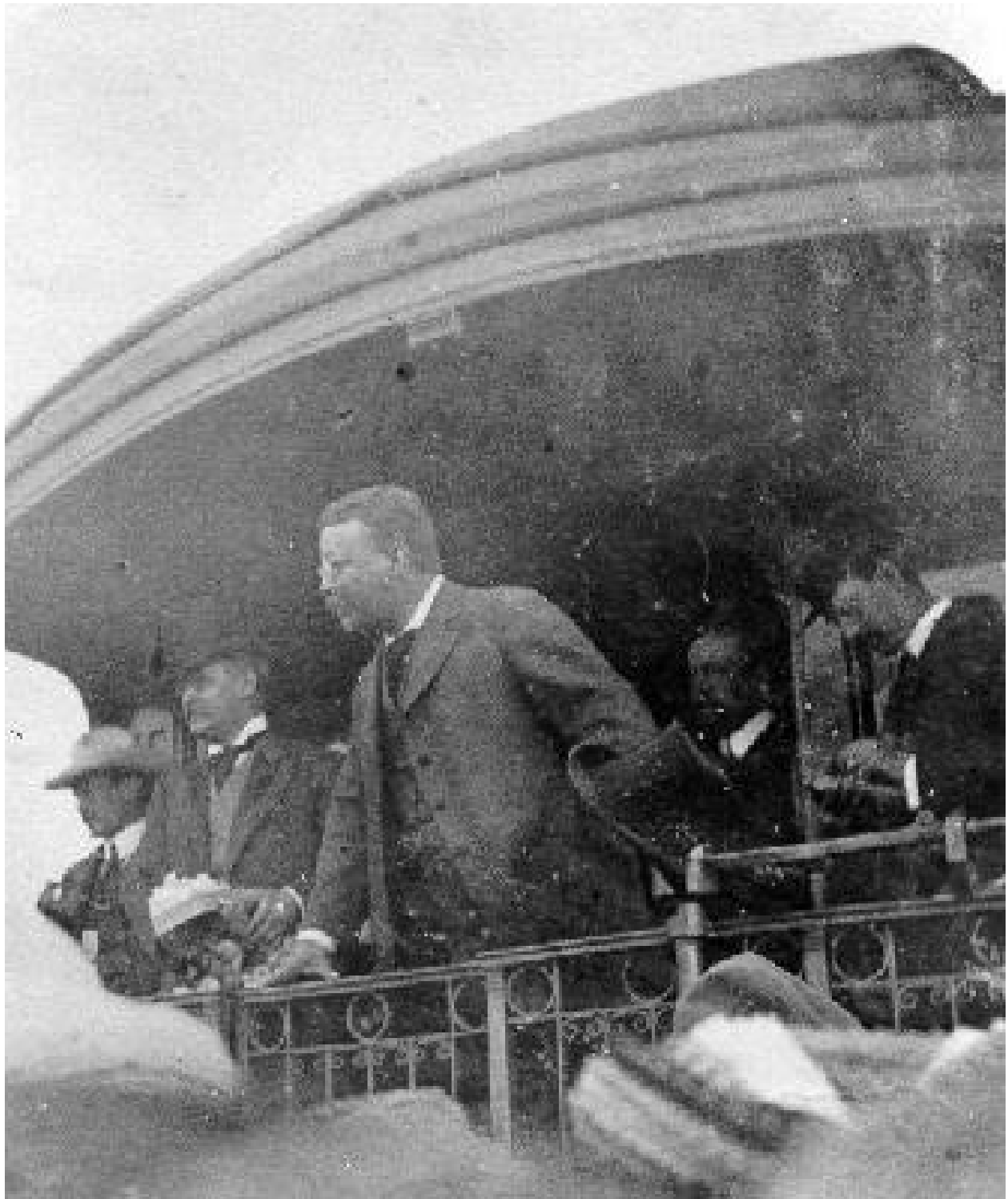
Another picture of the railroad station out at Surf Beach looking northeast to south-west.



Bridgeport, the town that serviced the Railroad builders near the Santa Ynez river and Ocean Park.



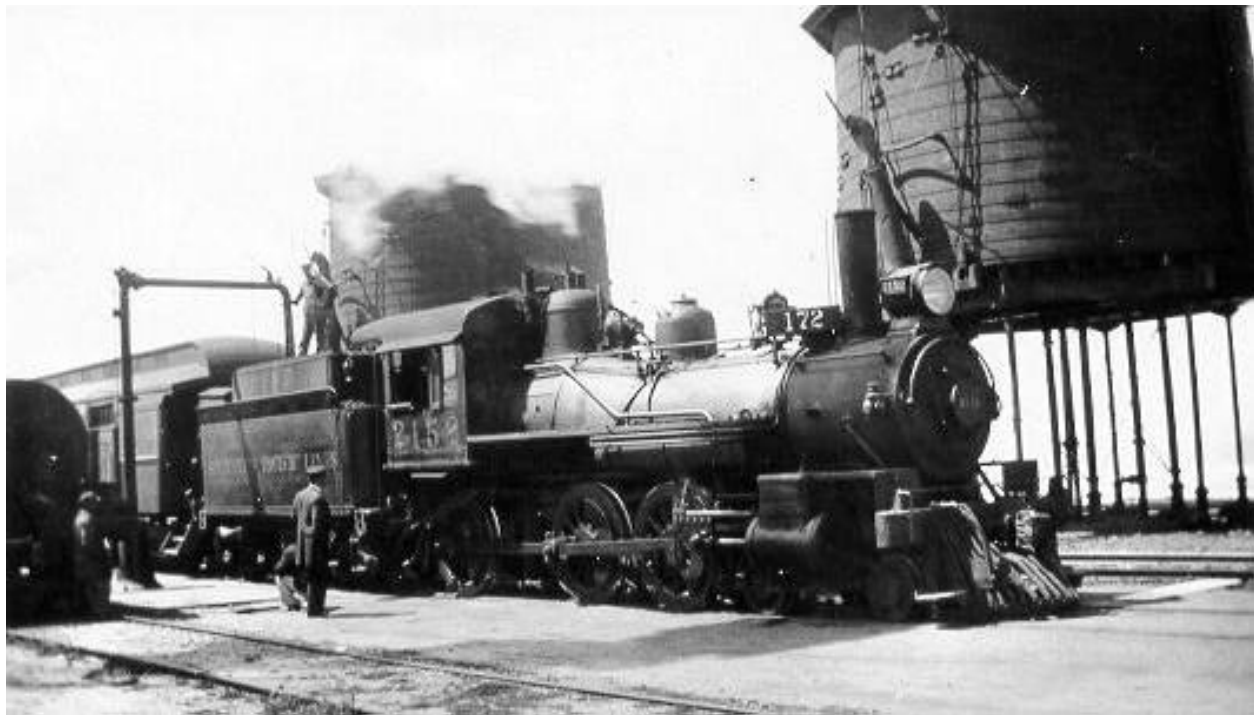
A train wreck in March of 1977



In 1903 President Theodore Roosevelt visits Surf Depot.



Shriner's train wreck on May 11, 1907. At 55 mph the drive wheels jumped off the tracks and snapped off. The cowcatcher buried in the ground and crushed the boiler. The Engineer was ejected from the train and survived. 32 People were killed.



A steam engine taking on supplies from the Surf Depot.