

**From the City of Lompoc Web Site
Created and Maintained by City of Lompoc Information Services
Division**

A very special thanks to the Lompoc Valley Historical Society and all the good folks for sharing their photo archives with us.

<http://www.ci.lompoc.ca.us/>

Fire Department Photos



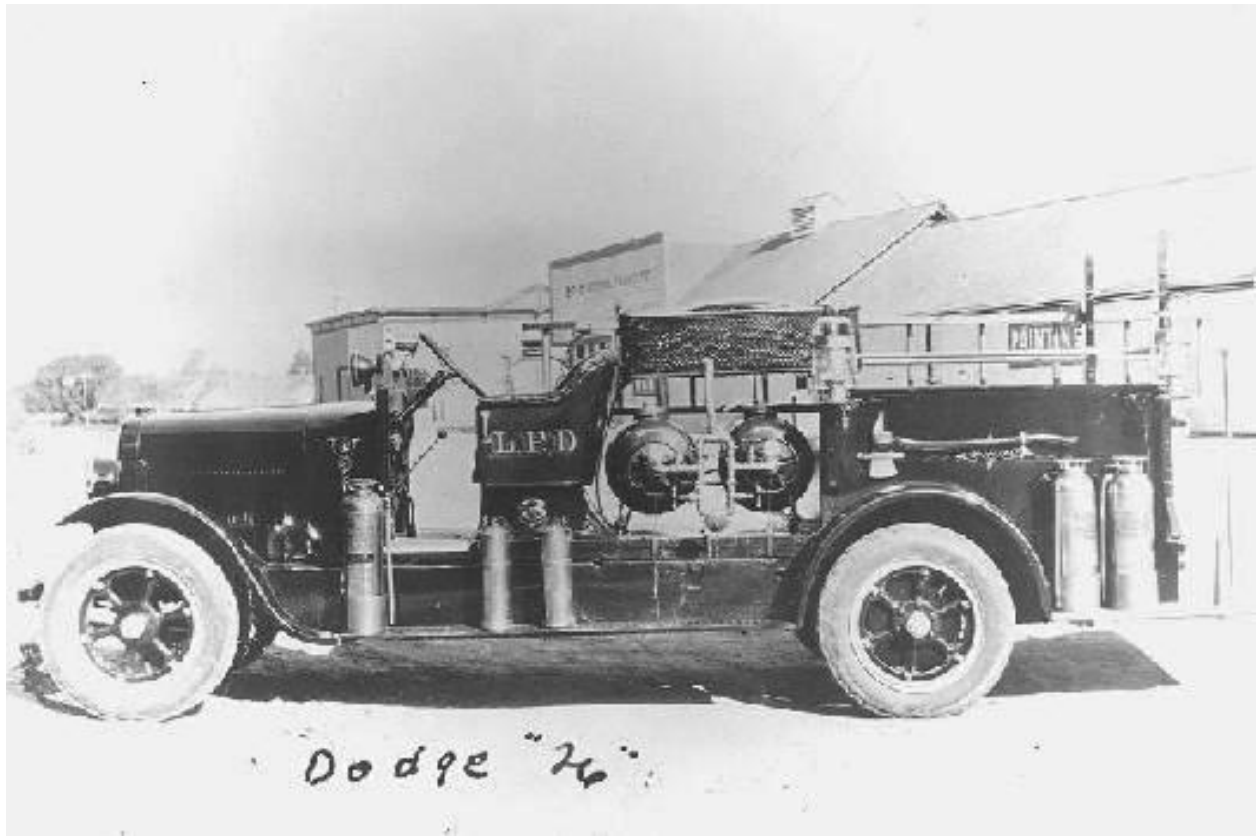
This is a picture of Charles Everett. He was the first Lompoc Fire Chief, from 1916 to 1950.



Art Beaver, Captain (middle) and Leonard Alexander, Fire Fighter (far right) taking delivery of a brand new 1951 Buick Ambulance from "Pooley" Jacobs, Councilman (left).



This fire engine is a 1962 Crown. It had a straight eight Hall-Scott 1091 engine, twenty years later was converted to a Detroit Diesel. In 1987 it was donated to Allan Hancock College Fire Academy. It was state of the art for it's time.



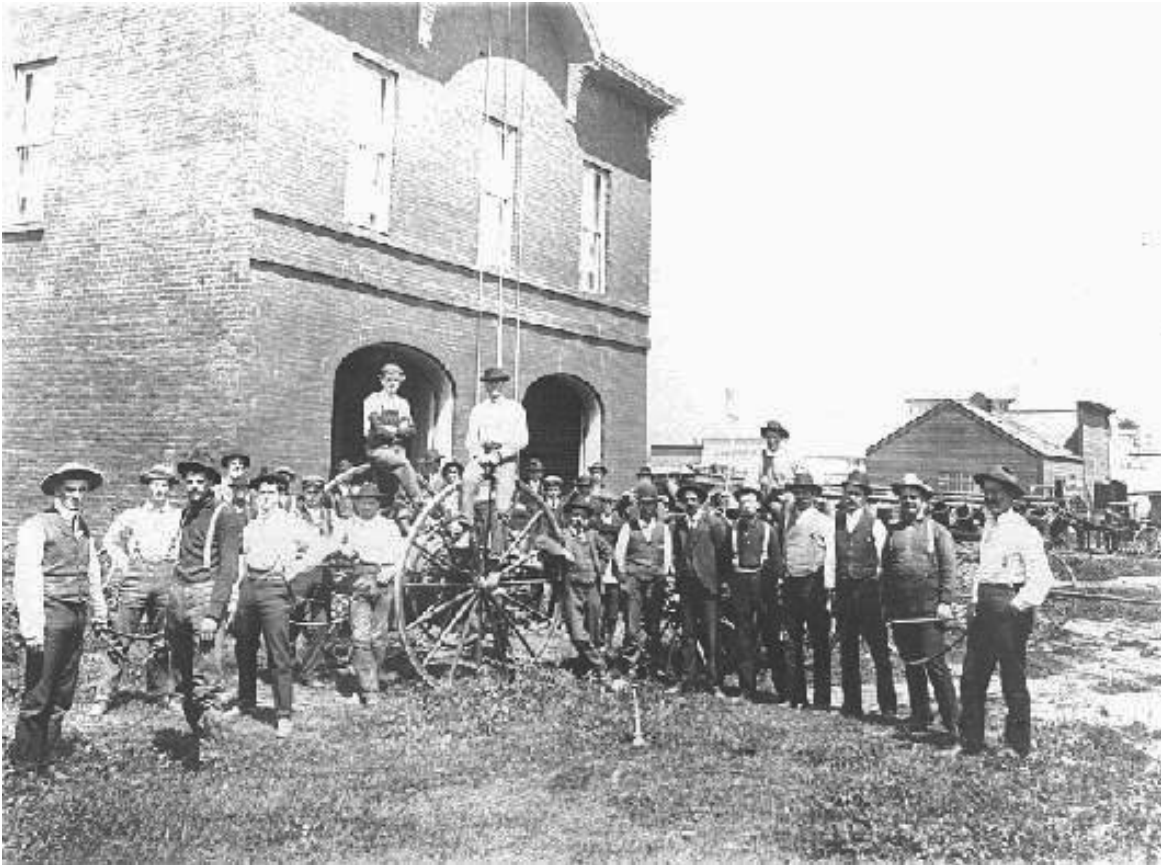
This fire engine is a 1926 Dodge also referred to as a "Chemical Wagon".



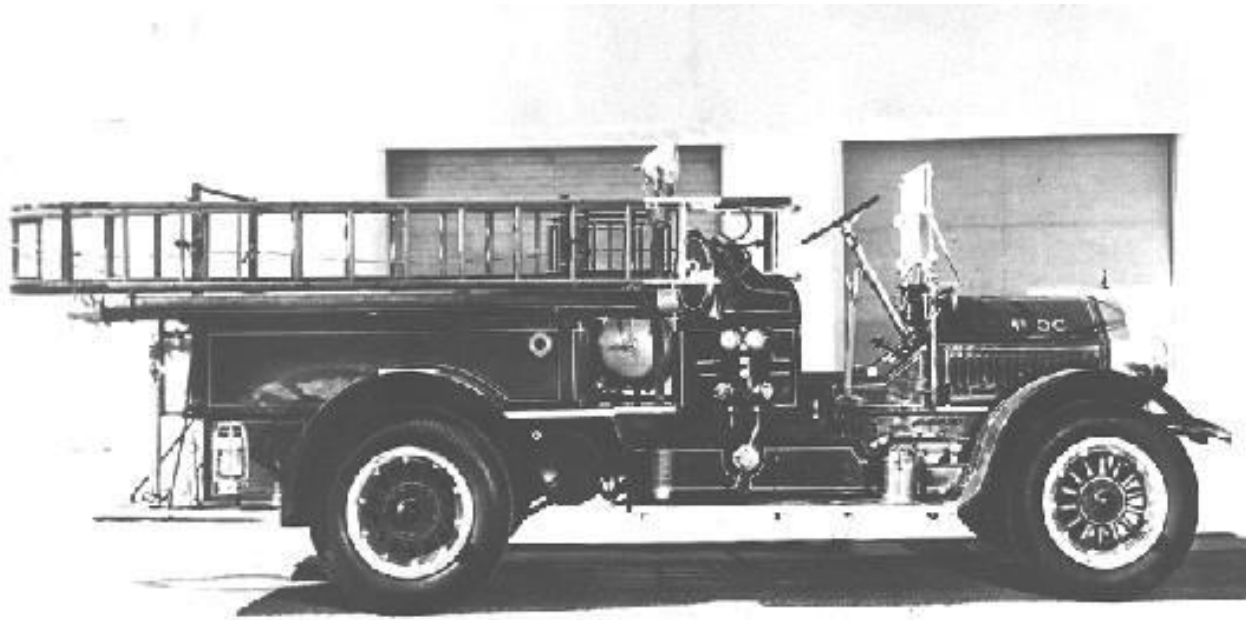
1951 GMC "750 Pumper" fire engine, it was in service for twenty seven years. In the background is a 1942 Chevy fire engine.



This 1920 fire engine has Charles Everett and his son Ed in it. This picture became the inspiration for the mural on the north wall of Fire Station #1



Early volunteers of the Lompoc Fire Dept. around a hose cart in 1890. The original bell is located in front of the Fire Station today.



Early 30's America La France fire engine, another example of Lompoc Fire Dept. equipment.



This is the Lompoc Fire Dept. that was built in 1888. The picture was taken in 1926 with fire engines 1, 2, and 3 in front. The first Fire Chief Charles Everett is in the far right fire engine.