

LOMPOC AQUATIC CENTER

2013-2014 ANNUAL REPORT



PROGRAMS AT THE AQUATIC CENTER

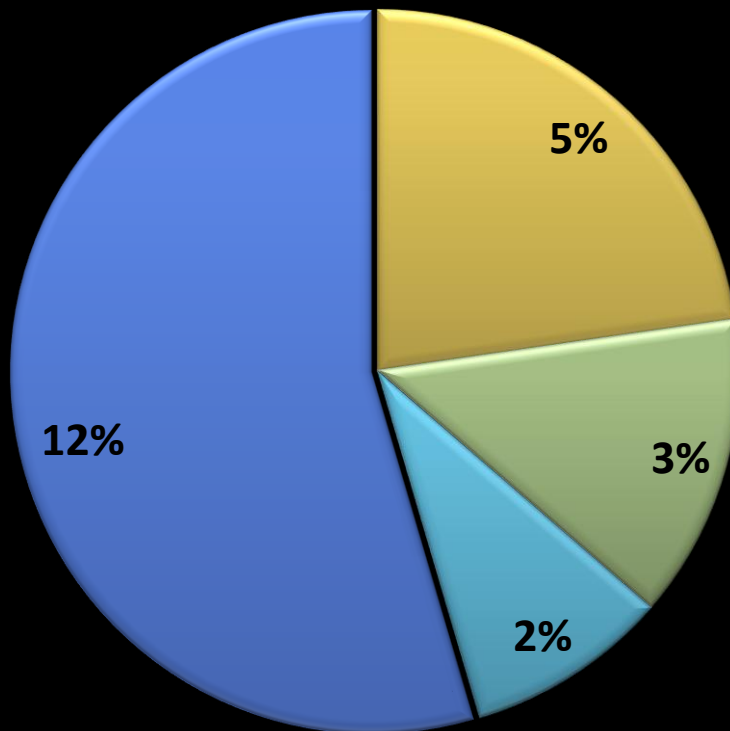
ACTIVITY OFFERED TO THE CONSUMER	PARTICIPATION FY 2012/13	PARTICIPATION FY 2013/14
Youth Swim Lessons	636 offered/4234 participants	779 offered/4558 participants
Water Exercise Classes	46 offered/596 participants	46 offered/409 participants
Warm Water Therapy Classes	23 offered/387participants	23 offered/423 participants
<u>PUBLIC ACCESS</u>	47,627 participants	52,404 participants
<ul style="list-style-type: none"> • 349.5 Hours of Recreation Swim • 73 hours of evening swim • Over 3,000 hours of combined Lap Swim opportunities • 441 Parent & Tot Swim Time • 188 hours of quiet family swim in Therapy Pool 		
Private/Semi Private Swim Lessons	141 participants	60 participants
Adult Swim Lessons	107 participants	155 participants
Drop-In Water Polo	379 participants	403 participants
Certification Programs (LGT/LGI/WSI/CPR)	88 participants	58 participants
Drop-In Water Exercise	332 participants	245 participants
2 Youth Commission Teen Pool Parties	286 participants	64 participants
6 Different specialty courses	259 participants	183 participants
<ul style="list-style-type: none"> • Aquatic related camps/leagues • Junior Tri/Triathlon • Splash & Dash event 		
Collaborative use for YMCA members	2982 participants	4,331 participants

HIGHLIGHTS FOR THE YEAR

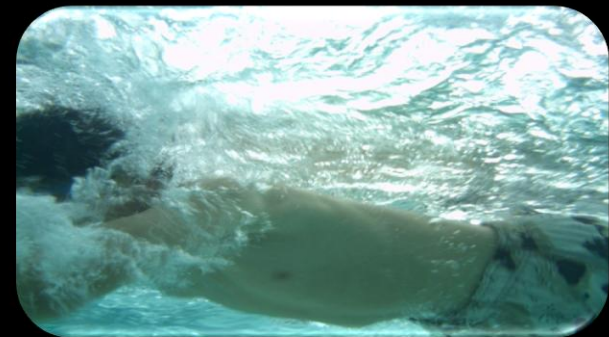
- Occupancy increased nearly 4% from 143,862 to 149,155
- Tsunami Swim Team held their first swim meet
- For the first time, the Los Padres League Scheduled their season preliminary and final competitions for boys and girls water polo and swim
- CIF scheduled 7 competitive events with the Facility this year
- Maintenance closures were minimized due to a program adjustment, keeping the facility open for most of the winter break
- Andrew Zavalla joined our team as our Senior Building Maintenance Worker and is doing a great job!

PROGRAM CUSTOMERS OUTSIDE OF LOMPOC

22% OF REGISTERED PROGRAM PARTICIPANTS COME FROM THE FOLLOWING:

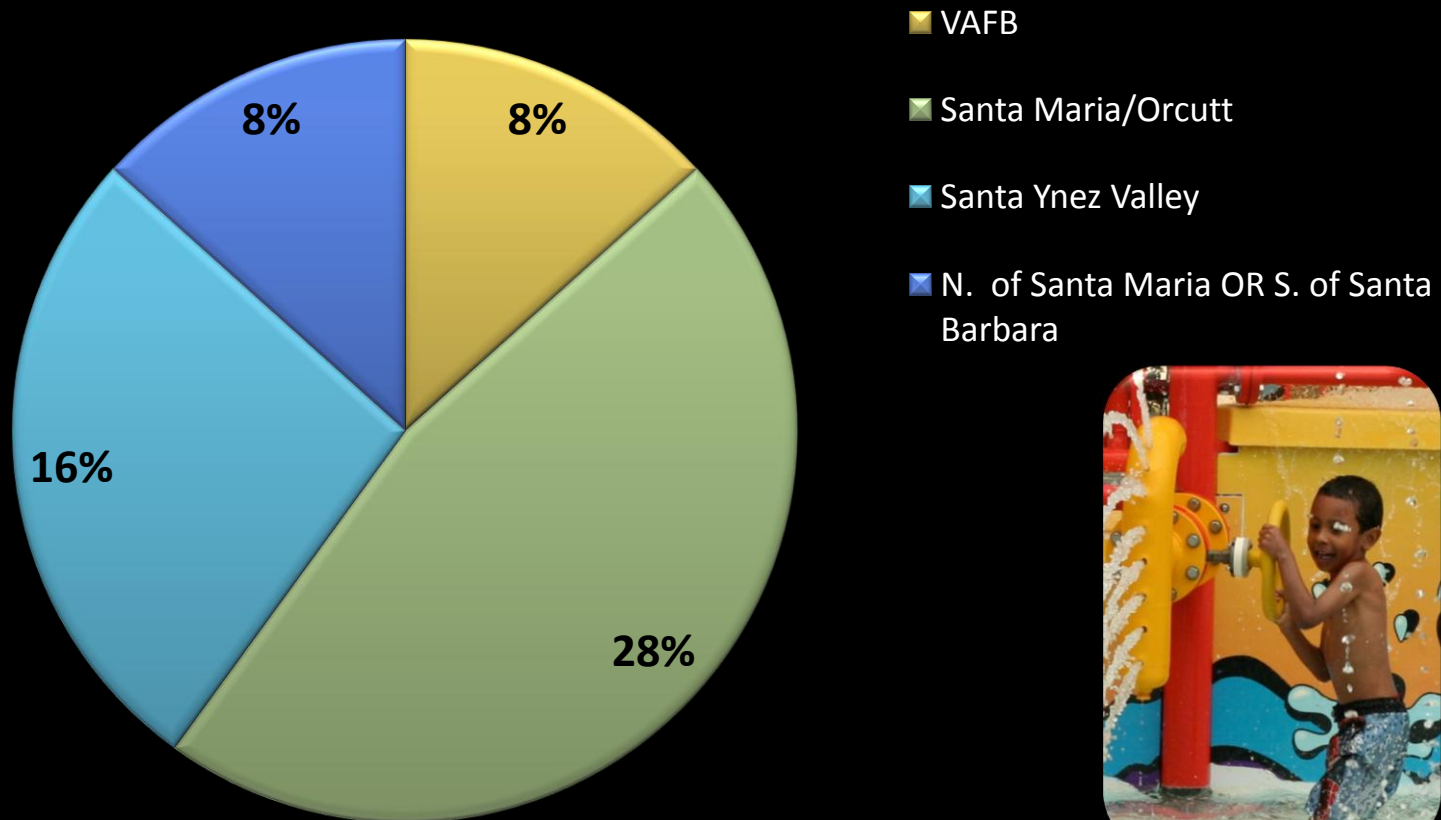


- VAFB
- SANTA YNEZ
- SANTA MARIA
- VILLAGE/MISSION HILLS



RENTAL CUSTOMERS OUTSIDE OF LOMPOC

60% OF RENTALS COME FROM THE FOLLOWING AREAS:



COMPETITIONS AT THE AQUATIC CENTER

- ❖ Lompoc High School, Cabrillo High School and Tsunami Swim Team utilize the Aquatic Center for practice and Competitions
- ❖ This past year, 2238.25 hours were utilized
- ❖ The facility hosted 35 different competitive events
- ❖ The facility generated \$6,984 in revenue from these events



REVENUES AT THE AQUATIC CENTER

PROGRAM	2012/2013	2013/2014	VARIANCE
Rec/Lap Swim	\$135,706	\$152,731	+ \$17,025
Rentals	\$ 49,072	\$ 63,355	+ \$14,283
Classes	\$ 23,065	\$ 23,204	+ \$ 139
Misc (Lockers/Vending)	\$ 2,665	\$ 1,464	- \$ 1,201
Lessons	\$ 58,050	\$ 48,170	- \$ 9,880
Splash Pass	\$136,716	\$158,089	+ \$21,373
TOTAL	\$405,274	\$447,013	+\$41,739

AQUATIC CENTER EXPENSES - SALARIES

PROGRAM	2012/2013 Actual	2013/2014 Budgeted	2013/2014 Actual	VARIANCE of Actual
FT Staff Salaries	58,936	100,305	84,177	25,241
FT Benefits/Insurance	25,042	50,894	37,499	12,457
PT Salaries/Benefits	241,210	245,263	250,240	9,030
TOTAL	325,188	396,462	371,916	46,728



AQUATIC CENTER EXPENSES - MISC

PROGRAM	2012/2013	2013/2014 Budgeted	2013/2014 Actual Exp	VARIANCE of Actual
Program Operations (equipment, supplies, awards/etc)	9,310	12,700	8,835	(475)
Other operation exp (printing/training/permits/etc)	11,327	9,075	9,986	(1,341)
Communications (cell and landlines)	1,941	2,590	2,590	649
Household	6,935	8,000	7,531	596
Building Maintenance	1,889	10,000	14,271	12,382
Pump Room Maintenance	39,227	19,000	21,238	(17,989)
Dehumidification Maint.	0	0	15,159	15,159
TOTAL	70,629	61,365	79,610	8,981

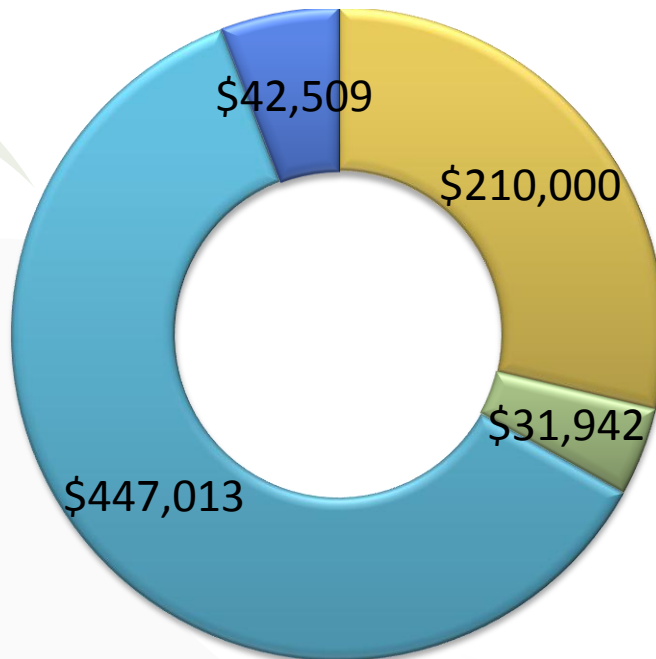
AQUATIC CENTER UTILITY COSTS

PROGRAM	2012/2013	2013/2014 Budgeted	2013/2014 Actual Exp	VARIANCE
Water	13,762	11,487	15,033	1,271
Electric	157,217	133,851	133,042	(24,175)
Natural Gas	46,885	43,515	64,995	18,110
Sewer	16,071	4,862	15,162	(909)
Chemicals	23,564	20,000	36,468	12,904
TOTAL	257,499	213,715	264,700	7,201

TOTAL AQUATIC CENTER FUNDS

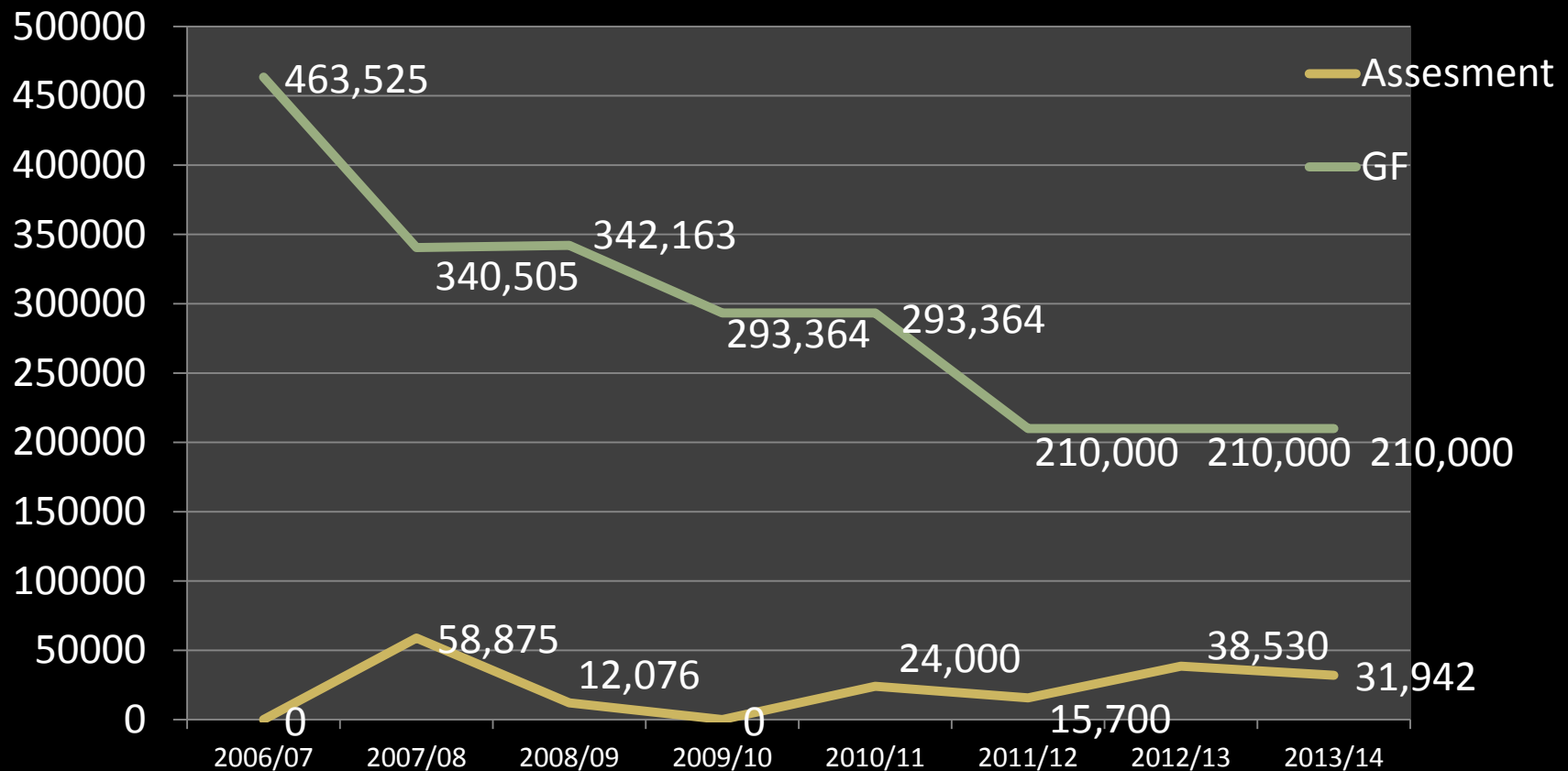
What makes up the funds for the Aquatic Center?

- User Fees (Programs, admissions, donations, rentals)
- Pool & Park Assessment
- General Fund Allocation (set at \$210,000)



- General Fund
- Assesment
- User Fees
- LAQC Reserves

HISTORY OF SUPPORT TO THE AQUATIC CENTER



WHAT DOES THE GENERAL FUND SUPPORT COVER?

100% of Electrical Costs ~ \$133,042

100% of Natural Gas Costs ~ \$64,995

80% of Water Costs ~ \$11,963

WHAT ADDITIONAL SUPPORT IS NEEDED TO BREAK EVEN?

100% of Chemical Costs ~ \$36,468

20% Remaining in Water Costs ~ \$3,070

43% of Sewer/Refuse Costs ~ \$2,971

FISCAL IMPACTS FY 2013/2014

- ❖ Revenues increased by 9.3 % = \$41,739
- ❖ Expenses increased by 8.7% = \$63,938
- ❖ The net operating deficit was \$42,509
- ❖ Operating deficit as a percent of operating budget = 5.8%
- ❖ Unrestricted reserves on June 30, 2014 stood at \$114,141
- ❖ At the close of FY 2013/14, unrestricted reserves stand at \$74,520
- ❖ FY 2012/2013 the Aquatic Center Fund was operating at a cost recovery rate of 60.8%
- ❖ FY 2013/2014 the Aquatic Center Fund operated at a cost recovery rate of 61.1%



PROJECTS COMPLETED AT THE AQUATIC CENTER UTILIZING BOND PROCEEDS

- Replacement of Bleachers - \$29,563
- Installation of ADA Doors - \$11,528
- Replacement of ADA Lifts - \$5,991
- Replacement of Lane Lines - \$12,513
- Installation of Sound System - \$10,631
- Replacement of Pool Covers – Not yet secured
- Installation of a barrier for ducting around slide tower – Not yet secured



GOALS/CHALLENGES FOR 2014/2015

Challenges:

- ❖ Minimum Wage Going Up Twice in 18 months
- ❖ Public Demands related to prime time programming
- ❖ Facility nearly 10 years old
- ❖ All three pools will need to be resurfaced in the coming years

Goals:

- ❖ Increasing revenues through a combination of a review of fees and program adjustments
- ❖ Adjustment to programming
- ❖ Preventative Maintenance Schedule on all Equipment
- ❖ Facility's Maintenance position conduct the dehumidification system preventive maintenance

QUESTIONS???

