

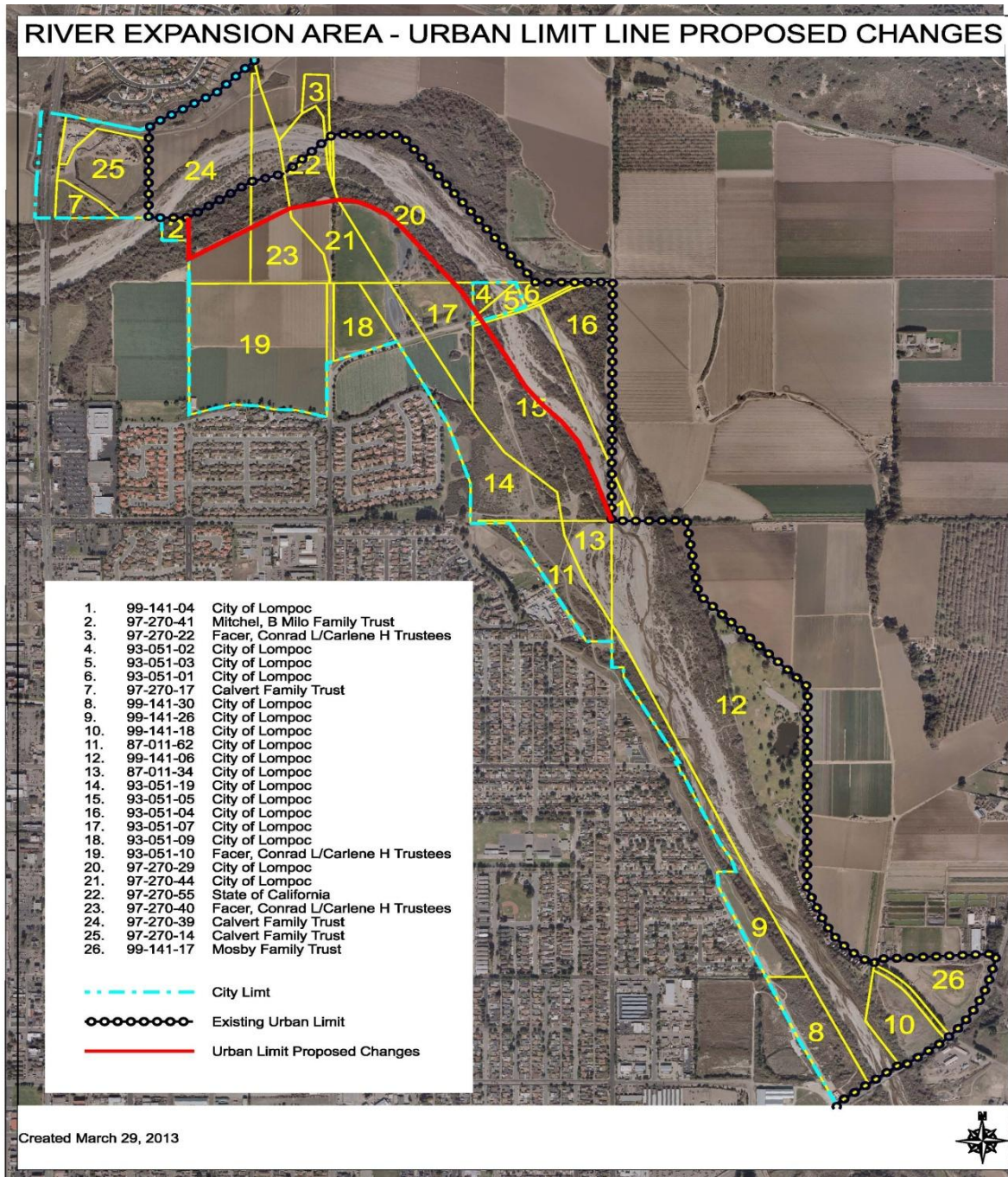
Expansion Area B

—




River Area



RIVER EXPANSION AREA - URBAN LIMIT LINE PROPOSED CHANGES



1.	99-141-04	City of Lompoc
2.	97-270-41	Mitchel, B Milo Family Trust
3.	97-270-22	Facer, Conrad L/Carlene H Trustees
4.	93-051-02	City of Lompoc
5.	93-051-03	City of Lompoc
6.	93-051-01	City of Lompoc
7.	97-270-17	Calvert Family Trust
8.	99-141-30	City of Lompoc
9.	99-141-26	City of Lompoc
10.	99-141-18	City of Lompoc
11.	87-011-62	City of Lompoc
12.	99-141-06	City of Lompoc
13.	87-011-34	City of Lompoc
14.	93-051-19	City of Lompoc
15.	93-051-05	City of Lompoc
16.	93-051-04	City of Lompoc
17.	93-051-07	City of Lompoc
18.	93-051-09	City of Lompoc
19.	93-051-10	Facer, Conrad L/Carlene H Trustees
20.	97-270-29	City of Lompoc
21.	97-270-44	City of Lompoc
22.	97-270-55	State of California
23.	97-270-40	Facer, Conrad L/Carlene H Trustees
24.	97-270-39	Calvert Family Trust
25.	97-270-14	Calvert Family Trust
26.	99-141-17	Mosby Family Trust

	City Limit
	Existing Urban Limit
	Urban Limit Proposed Changes



No.	APN	Owner	In ULL	Out ULL	Total Acres
1	099-141-004	City of Lompoc		1.41	1.41
2	097-270-041	Mitchel, B Milo Family Trust	1.43		1.43
3	097-270-022	Facer, Conrad L/ Carlene H Trust		2.95	2.95
4	093-051-002	City of Lompoc	0.06	1.78	1.84
5	093-051-003	City of Lompoc	0.01	1.88	1.89
6	093-051-001	City of Lompoc		1.42	1.42
7	097-270-017	Calvert Family Trust	3.39		3.39
8	099-141-030	City of Lompoc	12.12		12.12
9	099-141-026	City of Lompoc	17.10		17.10
10	099-141-018	City of Lompoc	8.59		8.59
11	087-011-062	City of Lompoc	9.97		9.97
12	099-141-006	City of Lompoc	114.33		114.33
13	087-011-034	City of Lompoc	6.12		6.12
14	093-051-019	City of Lompoc	25.54		25.54
15	093-051-005	City of Lompoc	25.12	17.42	42.54
16	093-051-004	City of Lompoc		15.57	15.57
17	093-051-007	City of Lompoc	12.09	0.53	12.64
18	093-051-009	City of Lompoc	7.24		7.24
19	093-051-010	Facer, Conrad L/ Carlene H Trust	41.81		41.81
20	097-270-029	City of Lompoc	9.54	31.72	41.26
21	097-270-044	City of Lompoc	9.80		9.80
22	097-270-055	State of California		9.45	9.45
23	097-270-040	Facer, Conrad L/ Carlene H Trust	10.18	8.65	18.83
24	097-270-039	Calvert Family Trust	5.80	36.29	42.09
25	097-270-014	Calvert Family Trust	13.48		13.48
26	099-141-017	Mosby Family Trust	9.51		9.51
		TOTAL	343.23	129.07	472.32

Privately owned parcels within the proposed annexation area.

