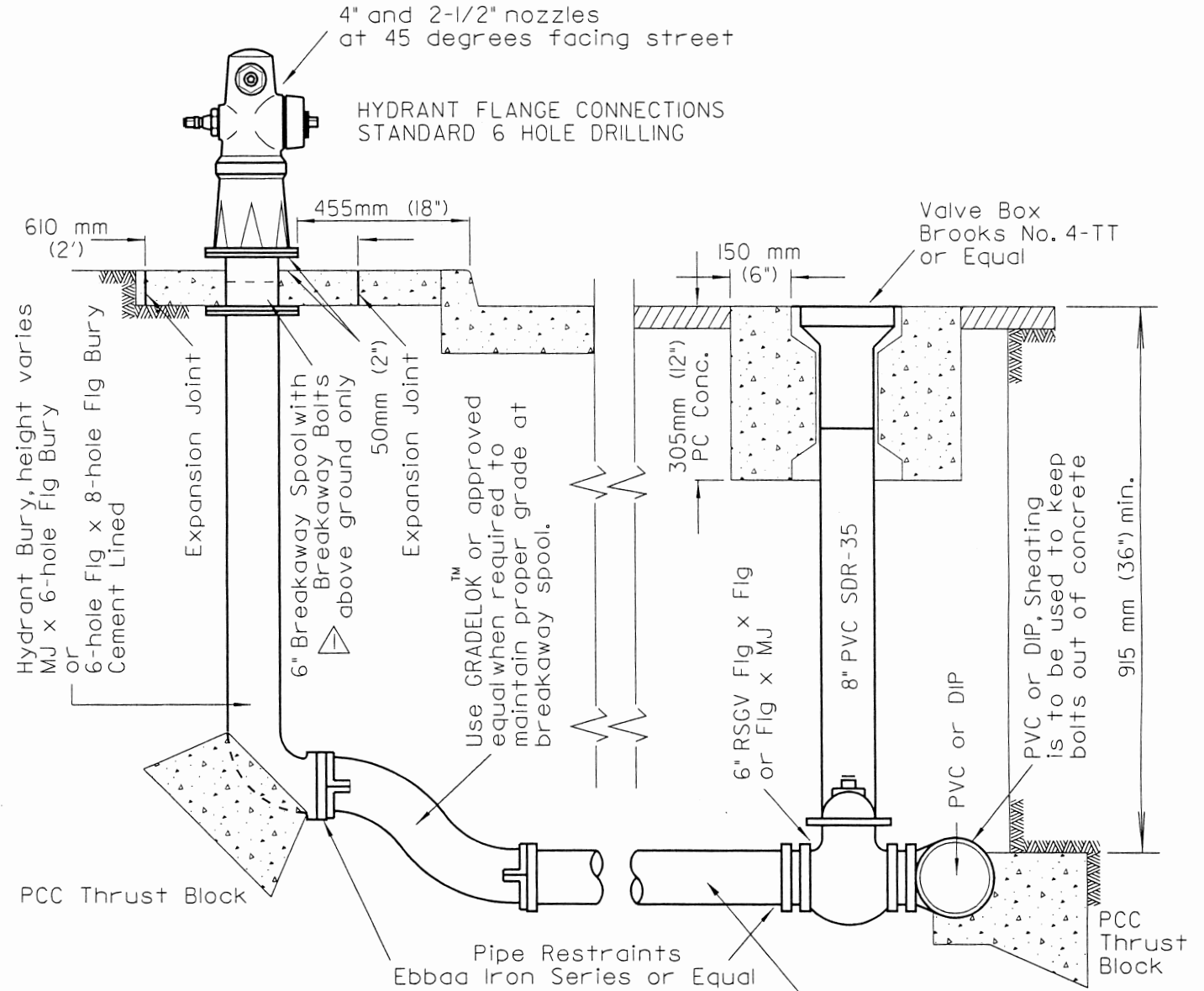


Residential Hydrants shall be all bronze construction with a 6 hole flanged inlet, one 4" national standard thread outlet and one 2-1/2" national standard thread outlet. They shall be manufactured with removeable stem support inserts, swivle disc assembly (no cotter pins), 1-1/8" Pentagon Operating Nuts and Bronze Caps. James Jones J-3700-R-Z2.



Commercial Hydrants shall be same as #1 except with one 4" national standard thread outlet and two 2-1/2" National standard thread outlets. James Jones J-3765.



NOTE: On long Hydrant runs use tracer wire and stub to flange bolts.

MATERIAL per City of LompoC Standard Specifications & Details, Section 4, II, G - Service Line Materials and Fittings

<h1 style="text-align: center;">Drawing No. 411</h1>		<h2 style="text-align: center;">CITY OF LOMPOC</h2> <p style="text-align: center;">Utility Department, Water Division</p>	
		<h3 style="text-align: center;">HYDRANT INSTALLATION</h3>	
①	Add breakaway bolt note to drawing.	KM	6/04
②	Updated Part # on Residential Hydrant Note.	KM	8/04
③	Modified material note	KM	2/07
MARK	REVISIONS	APPR.	DATE